

# WEATHER

	Min.	Max.	Precip.
Wednesday, Oct. 19	47	59	0.00
Thursday, Oct. 20	47	59	0.00
Friday, Oct. 21	46	64	0.00
Saturday, Oct. 22	49	73	0.00
Sunday, Oct. 23	42	65	0.00
Monday, Oct. 24	53	72	0.00
Tuesday, Oct. 25	53	78	0.00

By H. K. L.

# The Chelsea Standard

ONE HUNDRED-SECOND YEAR—No. 18

14 Pages This Week Plus 4-Page Tab Supplement

CHELSEA, MICHIGAN, THURSDAY, OCTOBER 21, 1971

15c per copy

SUBSCRIPTION: \$4.00 PER YEAR

## QUOTE

"Those who make the most of their time make the most money."  
—Arnold Glasow.

## Bulldogs Still Undefeated in Win Over Novi

### Homecoming Slated Friday Evening with Dundee as Opponents

The Chelsea Bulldogs became the only undefeated team in the Southeastern Conference Friday night, as they downed Novi, 36 to 28, in a tight ball game played on Novi territory.

Chelsea got their first seven points as Mark Collins went the final three yards of a 56-yard drive, and Steve Knickerbocker kicked the extra point. Highlighting the drive were a 27-yard pass from Wayne Welton to Jeff Hughes, and another 21-yard Welton pass to end Dave Lukasak.

Novi tied the score as Jim Van Wagner ran 57 yards for a touchdown, and an extra point kick succeeded. The Wildcats took the lead in the second quarter on a two-yard touchdown run by Pat Boyer.

The Bulldogs scored with 33 seconds left in the half, as Welton ran a one-yard quarterback sneak. Chelsea tried for two on the conversion and failed, and the half ended with Novi leading, 14 to 13.

Novi scored again after taking the second half kickoff, as Jim Van Wagner went the final three yards. The extra point attempt was not good, and Novi led, 20 to 13.

Chelsea's defense held the Wildcats after a Chelsea punt, stopping the Novi offense on their fourth down try for the one yard needed to give them a first down on their own 39. Instrumental in stopping the Novi offense were Jeff Schmidt, Ed Koenigster and Joe Aspiranti.

After Chelsea took control on the Wildcats' 38, Tom Lixey ran nine yards, Welton passed to Dave Lukasak for 14 yards, and the Bulldogs scored as Welton completed a nine-yard pass to Tim Lancaster.

With the score 19 to 20, in favor of Novi, Chelsea tried for the two-point conversion. Aided by blocks from Bob Wojcicki, Randy Seitz, Keith Pfeiffer and Jeff Hughes, Tom Lixey crossed the goal line to put Chelsea in the lead, 21 to 20.

The third period touchdown set the tone for Chelsea's fourth quarter two touchdown explosion.

Quarterback Wayne Welton hit Marty Cashdollar for a 66-yard touchdown play which was capped by Welton's successful run for the two extra points, giving Chelsea a 29 to 20 lead.

Welton, who completed eight of 13 passes for 165 yards, ended Chelsea's scoring with a 17-yard touchdown pass to Mark Collins.

With five seconds left in the fourth quarter, Novi quarterback Steve Lukari hit John Pantalone with a touchdown pass, and Novi picked up two more on the extra

## Halloween Party Slated Oct. 30

The annual kid's Halloween parade and party, sponsored by the Chelsea Kiwanis club, will be held Saturday, Oct. 30.

Following a Trick or Treat from 5 to 6:30 p.m. Saturday, kids will assemble at the Municipal parking lot at 6:30 p.m. for noisemakers, the parade and the costume judging. Following the parade, which will begin at 7 p.m., there will be cider and donuts served and prizes awarded from 7:15 to 7:30 p.m. at the parking lot.

## Elementary Schools Plan Open House

Both North and South Elementary schools will hold their annual open house events for parents Thursday, Oct. 21 from 7 to 8:30 p.m.

During the open houses, parents will be able to visit their children's rooms, meet their teachers, see displays of the children's work, and learn about the various programs going on in the class rooms during the day.

Refreshments will be served at both open houses. At North school, the refreshments will be prepared by the room mothers and the North School Boosters, and at South school by the South School PTO.

Both South School Principal Sylvester Wojcicki and North School Principal Robert Benedict remind parents that open houses are not a conference time. Parent-teacher conferences will be held at both schools in November.

Both principals said that last year's open houses had met a "tremendous" response from the parents. Benedict said that approximately 80 percent of North school's parents attended the open house last year, and Wojcicki said that South school had between 700 and 800 visitors. Both principals anticipate an excellent response again this year.

The two elementary school's open houses coincide with the observance National Education Week.

## Hockey Rink Authorized

Chelsea Village Council voted unanimously Tuesday night to authorize the construction of an ice skating rink at the Chelsea Community Fairgrounds.

The rink, proposed by representatives of the Recreation Planning Commission, will be 200' by 85' and will cost approximately \$3,000.

The Council also unanimously approved the appointment of Robert Schaeffer to a position on the Chelsea Village Planning commission. Schaeffer will fill an unexpired three-year term.

## Disturbance at Cassidy Lake Flares Sunday

Twelve of 14 inmates who walked away from Cassidy Lake prison camp Monday and Tuesday nights, following an apparently racially motivated disturbance at the camp Sunday night, were still being sought by Michigan law enforcement agencies Wednesday afternoon.

According to Louis C. Utess, director of the camp, none of the escapees had been among the 35 to 50 of the camp's 271 inmates involved in Sunday night's hour-long melee which injured two prisoners and caused moderate damage to the prison camp's facilities.

"Our security has been as tight as we could make it," Utess said, "but it's pretty easy to walk out of a place like this." Utess added that he felt the walk-outs could be attributed to the uneasy atmosphere which prevailed in the camp after Sunday's battle.

The two escapees no longer missing are currently being held in the Washtenaw County Jail, Utess said.

Sunday night's disturbance was apparently caused by "long smoldering issues." During the melee "the men used sticks, stones, fists and rocks—whatever they could lay their hands on," Utess said, adding that the damage to the prison facilities, which consist primarily of one-story cabins, was mainly confined to broken windows and some broken furniture.

A force of 75 officers from the Jackson State Police Post, the Washtenaw County Sheriff's Department, and police departments in surrounding communities, was rushed to the prison camp, but the 10 prison camp guards, bolstered by 20 guards from Southern Michigan Prison in Jackson, subdued the disturbance without outside help.

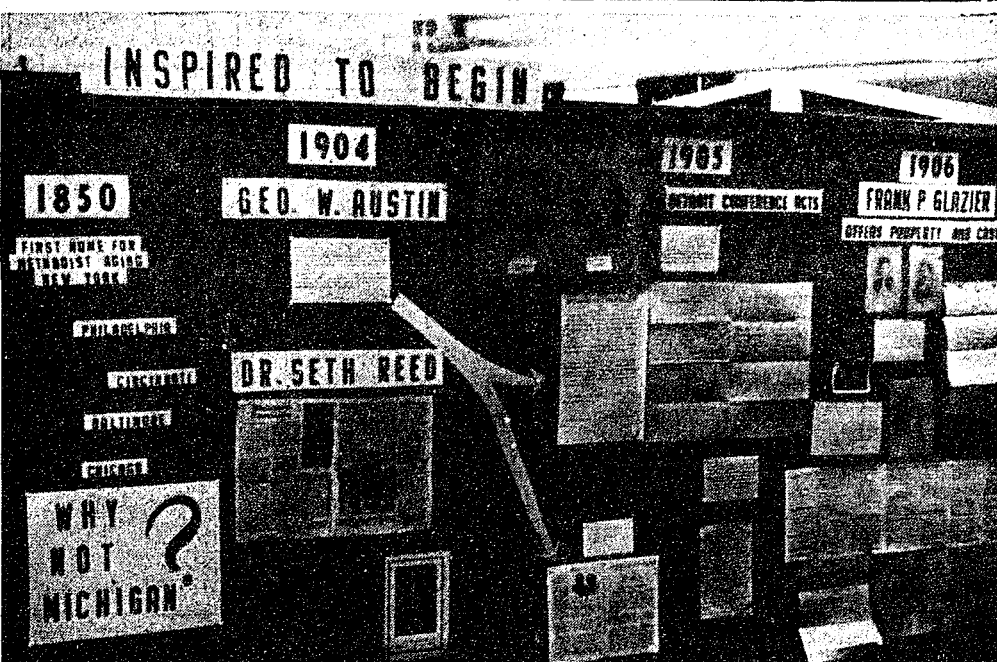
Due to the racial issues which apparently were underlying causes in the outbreak, prisoners were segregated into black and white sections Sunday night following the disturbance, Utess said.

On Monday, officials of the camp began interviewing inmates to ascertain the specific issues "bugging" them. "We hope that by talking things out and establishing better lines of communication, we will find out what is bothering both sides, and may find out what can be done to correct the situation," Utess explained.

By Monday night the camp was integrated again.

Cassidy Lake's population is made up of youths from 17 to 23 whose average sentence is 12 months. Most of the prisoners are screened at the Jackson Prison and then sent to the camp to serve their sentence.

Early reports which said that a guard was taken hostage by the



**HISTORICAL DISPLAY:** The long, and fascinating, history of the Chelsea United Methodist Home has been illustrated and posted on display boards—like this one showing the inception of the Chelsea Home—which will be included in an historical display in the basement of the Main Building during the Home's open house to be held from 1 to 4 p.m. this Sunday. In addition to the historical display there will be a bazaar featuring hand-made crafts items, baked goods, etc., tours of the Home's facilities, and refreshments.



**ANTIQUÉ WEDDING GOWN:** Mrs. Inez Millman, resident advisor at the Chelsea United Methodist Home, holds the gown worn by Home resident Mrs. Edith Pierce at her turn-of-the-century wedding. Mrs. Millman stands in the middle of a model bedroom, filled entirely with antique furniture, which is part of a display in the main building which will be open to visitors at the Home's Open House to be held from 1 to 4 p.m. this Sunday.

## Open House, Bazaar Slated Sunday at Methodist Home

An Open House, designed especially for residents of the Chelsea area, will be held in conjunction with the annual bazaar at the Chelsea United Methodist Home this Sunday, Oct. 24.

Feature attractions at the Home, which will be open to visitors from 1 to 4 p.m., will be the antique and historical display in the basement of the main building, and the bazaar in the recreation room of the "M" building.

The extensive antique and historical display set up during long hours of work by the Rev. Clemans and his staff, traces the development of the Home and also gives a feeling for the history of the time during which it was established.

Model rooms of antique furniture and displays of old clothing, home articles, pictures, and other artifacts belonging to the late 1800's and early 1900's fill the large basement room.

The history of the Chelsea Home is illustrated through the use of large display boards containing old

documents and photographs of many of those instrumental in its establishment.

The bazaar will feature a display and sale of hand-made ceramics, quilts, and other items, as well as a bake sale.

Visitors may also tour the home's facilities during the afternoon. According to Mrs. Inez Millman, resident advisor, refresh-

ments will be served in the main dining room from 1 to 3 p.m.

## Beach School Open House Set for Monday

Beach Middle school will hold an open house for parents Monday, Oct. 25 from 7:30 to 9:45 p.m.

During the open house, which coincides with the observance of National Education Week, parents will "go to school" by following their youngster's schedule through seven 10-minute classes.

In this way, said Alan Conklin, Principal of Beach School, the parents will become acquainted with the school's curriculum and teachers.

Schedules will be picked up in the home rooms, and refreshments will be served in the school cafeteria following the "capsule" school day.

## School Board Votes To Sell Old Junior High Site

The Chelsea Board of Education, upon recommendations by both the Business, Administration and Finance Committee and the Planning Committee, voted unanimously at Monday night's regular board meeting to sell the property once occupied by the old Junior High school.

A joint meeting of the two committees will be held this Friday night to decide on a proceeding (Continued on page five)

## Chest Drive Extended One More Week

### Campaign Workers Point Out That Pledges May Be Paid at Later Date

Chelsea Community Chest Campaign, originally scheduled to close Oct. 23, will be extended until the end of October, according to James Hoffmeyer, chairman of this year's campaign.

The extension of the drive, which will add little more than one extra week to the campaign's attempt to reach its \$26,007 goal, was caused primarily by two problems facing the chest this year, Hoffmeyer said.

One of the difficulties results from the wage-price freeze, which has apparently cut into the amounts pledged by teachers, and other workers, who were due to receive raises this fall, but did not.

"These people seem to feel that they have to make their actual contribution now," Hoffmeyer said, "But it's not true. Actually, the donation may be made any time before the end of 1972—we just want to know how much people are willing to pledge during the campaign."

Hoffmeyer added that hopefully, during the one-week extension, people may become aware that the Chest is seeking pledges, as well

as contributions, during the duration of the campaign. "Perhaps people will make additional pledges when they realize this is the case," Hoffmeyer said.

Allegations by the Sportsman's Alliance of Michigan opposing the support of the Michigan United Fund (one of the 12 agencies receiving funds from the Chelsea Community Chest) because some of its constituent members have taken a stance on gun control legislation, have been the major difficulty encountered in the campaign.

Despite the fact that SAM's position on gun control seems more restrictive than that of either the National Council on Crime and Delinquency (NCCD) or the Michigan Council on Crime and Delinquency (MCCD), the two organizations named in SAM's charges, SAM is involved in an active campaign against the support of local fund drives because some money collected in them eventually reaches these groups, Hoffmeyer said.

According to Hoffmeyer, neither the NCCD nor the MCCD is either a political or lobbying group. "No NCCD money has been used to support any form of gun legislation since 1969, and no MCCD money has ever been used for that purpose," Hoffmeyer said, adding that the National Rifle Association (NRA) is in sympathy with the recommendations made by the NCCD.

"If you give \$57 to the Chelsea Community Chest, one penny goes to NCCD," Hoffmeyer continued.

Hoffmeyer said that unfortunately the gun legislation issue will probably have a negative effect on this year's campaign total.

"Some of the division chairmen are getting good results now, but we can't say how much our gains will offset our loss. We just don't know if we will reach our goal."

As of Sunday, Oct. 17, 18 percent of the goal—some \$4,700—had been pledged or collected. "This is apparently 'normal' for the first week of a campaign, but it really is too early to say whether we're above or below where we should be," Hoffmeyer said.

Hoffmeyer added that the allegations made by SAM will probably result in court suits being filed by constituent members of the Michigan United Fund (not MUF itself) due to their untrue nature.

## Funds Canvass For UNICEF Slated Sunday

The 1971 collection of UNICEF—United Nations Children's Fund—will take place in Chelsea this Sunday, Oct. 24, between 2 and 3 p.m.

UNICEF is celebrating its 25th anniversary this year. During the past 25 years UNICEF has treated trachoma in 43 million children, set up 965 pre-vocational training schools for young people, outfitted 50,000 rural health centers, set up more than 4,000 nutrition centers, demonstration areas and community gardens, and donated equipment to 56,000 primary and secondary schools.

A 25-cent donation to UNICEF will buy enough antibiotic ointment to cure five children of trachoma, or enough seed to produce 3,000 tomato plants, or enough BCG vaccine to protect 25 children against tuberculosis, or enough dried milk to provide five (Continued on page six)



**LAST-MINUTE TOUCHDOWN DRIVE:** Novi quarterback Jim VanWagner (25) was all alone as he pitched a long gain to set up a last-minute touchdown score during the Chelsea-Nov game



**DESPERATE TACKLE:** Chelsea's Mark Collins (24) is caught from behind by a desperate Novi tackler, cutting off an 18-yard run late in the fourth quarter. The Novi-Chelsea game which Chelsea won, 36 to 28, left the Bulldogs the only undefeated team in the Southeastern Conference. Friday night's Homecoming game will pit the Bulldogs against Dundee.

played in Novi Friday night. The touchdown and conversion didn't matter—Chelsea had the tight contest all sewn up. Final score: Chelsea 36, Novi 28.

Chelsea won, 36 to 28, left the Bulldogs the only undefeated team in the Southeastern Conference. Friday night's Homecoming game will pit the Bulldogs against Dundee.



**FIRST PHEASANT:** Jim Centilli shot this pheasant—the first of the season reported—approximately two minutes after the season opened at 10 a.m. Wednesday, Oct. 20. Centilli's claim is verified by his hunting partner, Don Haywood, 221

Jefferson. The two were hunting in a corn field on Lima Center Rd., south of Jackson Rd. Hunting for the first time this year was Centilli's seven-month-old cocker, Fluffy, who located the bird after it was shot.





## Washington Report by Congressman MARVIN L. ESCH

Over recent months Edward Assem of Milan and a group of others in the Second Congressional District have complained at the delays in attempting to obtain prompt weather information from the National Weather Service phones out of Metropolitan Airport in Detroit.

I took this information to the National Oceanic and Atmospheric Administration of the U. S. Department of Commerce with which I had worked previously in my attempts to expand weather service in the state of Michigan.

We have made some meaningful progress in developing a federal program for a national agricultural weather service, recognizing that weather is the pivotal point for so many phases of the agricultural production cycle.

Anyone who farms knows only too well that farming has become heavily dependent upon machinery and chemicals. Buying tractors and implements too large or too small for the expected number of farmwork days is loaded with risks. Here poor allocation of capital can have horrendous effects. Proper utilization of accurate weather forecasts in farm operations can save a washed-off chemical, reduce the spread of pesticide material to other than the target area, add to overall farm efficiency and help maintain a healthy and wholesome environment. Each seed planted at the wrong time can rot in a cold, wet soil.

Weather also influences livestock and plays a major role at calving and lambing time. Additionally, weather is the most significant variable explaining the year to year fluctuations in the yield of certain crops. Less than optimum growing conditions can mean a reduction in farm income on an average of \$1.6 billion a year. There is no doubt that more complete information on weather trends would provide the basis for more efficient agriculture throughout the nation.

Congress recognized the necessity of developing a federal plan some time ago but it was only in

the last two years that we have been able to move forward on a nationwide basis and structure a program of improved techniques of weather interpretation and communication. A planned weather service is now being used by 92 subscribers in Michigan. The cost for joining the NOAA radio weather transmission service is purposely kept low to encourage all media and other agencies to retransmit such weather information as a public service. In some instances, and this has happened at Fremont, a local service club has bought the service at a cost of around \$50 monthly and is making it available to the farmers in that area. In other parts of the country, farm co-operatives are the major subscribers. In Detroit, there are 13 subscribers, nine are in broadcasting and two are newspapers. In addition, both of the major wire services have picked up the service.

Congress has appropriated \$1.8 million for fiscal '72 to expand the plan. As the program reaches more and more parts of Michigan, the busy telephone problem that is commonplace to so many of the National Weather Service offices, will be eliminated.

As a further expansion of the program, NOAA is taking steps to establish VHF-FM radio transmitters around the country that will provide continuous weather broadcasts. Such equipment is now on order for Detroit with installation expected in early 1972. These transmitters are intended to supplement, not to compete with standard radio and television programs. The VHF-FM transmitters can normally be received as far as 40 to 60 miles from the antenna site and where transmitting antennas are on high ground the range is greater.

This added refinement, in addition to the service already available to the mass media at such low cost, should go a long way toward more rapid and efficient dissemination of forecasts, warnings, outlooks and advisories.

## 4-H Calendar

District Planning Workshops—  
Thursday, Oct. 21, 7:45 p.m., St. Luke Episcopal church, 120 N. Huron, Ann Arbor.  
Tuesday, Nov. 9, 7:45 p.m., Chelsea High School, room 113.  
Thursday, Nov. 11, 7:45 p.m., County Building, 117A.

### DEO OPTIMO MAXIMO?

A 16th-century Benedictine monk, dabbling with medicinal elixirs discovered Benedictine liqueur. Each bottle still bears the initials D.O.M., Deo Optimo Maximo - To God, most good, most great.



the  
most  
famous  
basket  
in the  
world®

Welcome Wagon®  
PHONE 426-8897

Established 1871 The Chelsea Standard Telephone GR 5-9581

Excellence Award by Michigan Press Association  
1951-1952-1960-1964-1965-1966

Walter P. Leonard, Editor and Publisher

Published every Thursday morning at 300 North Main Street, Chelsea, Mich. 48118, and second class postage paid at Chelsea, Mich., under the Act of March 3, 1879.

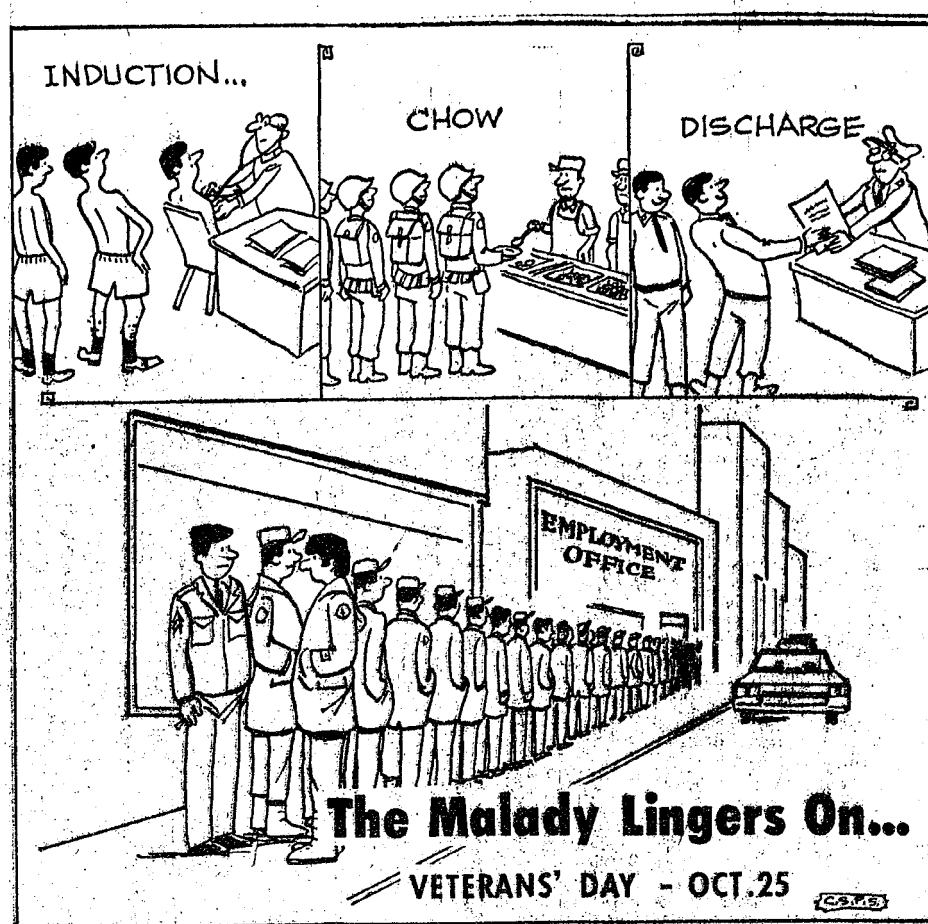
### ADDRESS CORRECTION REQUESTED

Subscription Rates (Payable in Advance)

In Michigan:	Outside Michigan:
One Year \$4.00	One Year \$6.00
Six Months \$2.25	Six Months \$3.50
Single Copies \$ .15	Single Copies \$ .20

Service men or women, anywhere, 1 year \$4.00

MEMBER  
**NATIONAL PAPER**  
Association - Founded 1888  
National Advertising Representative  
MICHIGAN NEWSPAPERS, INC.  
287 Michigan Ave.  
East Lansing, Mich. 48824



## ★ MICHIGAN MIRROR ★

By Elmer E. White, Secretary, Michigan Press Association

### 50,000 Jobs Lost

There are 50,000 fewer jobs in Michigan than if foreign cars had not sold so well during the last two years. That is the estimate of B. M. Conboy, director of Michigan Commerce Department's office of Economic Expansion.

Sale of foreign cars increased about 30 percent during the last 24 months, and this means that many Michigan jobs simply could not be put to work. Conboy stresses that the 50,000 does not mean people fired or laid off; it is his estimate of those who were not hired.

Since wages are lower in other countries, Conboy hopes that President Nixon's decision to impose a 10 percent surcharge on foreign cars will equalize the cost until overseas wage rates increase to be more comparable with our own.

### Swallow Dubious

A whole new interest in the subject of legislative reform among his legislative colleagues is apparent, says State Rep. Joe Swallow.

And, he quickly adds, he thinks he knows why. He thinks it's because of the public response he's been getting to his proposal for the establishment of a one-house legislature in Michigan.

He suspects, along with some other observers, that the lawmakers are now taking his proposal seriously. And they figure the easiest way to beat it is "show the state with conflicting proposals for various types of legislative reform."

The Alpena lawmaker says he wouldn't be so suspicious of his colleagues if they hadn't waited until after his idea started catching on to come up with other proposals.

"Before I started organizing support for the one-house legislature, there was no attempt on the part of the legislature for any major reform of the legislative process," he says. "Numerous calls for study and reform have been made by Michigan legislators since that time."

For instance, he points to State Sen. Patrick McCollough's introduction of a proposal to establish a parliamentary system of government in Michigan. Or, he says, there is Sen. Robert Davis' proposal to establish a legislative committee to study a one-house legislature and a separate proposal by Davis to cut the Senate to 19 members and the House to 57.

"To establish a legislative study committee to study legislative

reform is like appointing foxes to study the safety of a hen house," Swallow says. "I do not believe that a fair and unbiased report could come from a committee that would most likely contain legislative members who have already spoken out against a one-house legislature."

And he says Davis is completely missing the point when he talks, as have several others, of cutting down on the size of each chamber.

"The problems we are currently facing in the legislature are not due to its size, but rather its structure," he says. "Two houses, regardless of their size, still leave the doors wide open to intrahouse maneuvering, which is a politician's dream for avoiding responsibility."

"Legislative streamlining and reform," he says, "is unquestionably long overdue. The power to do this has always existed but has not been exercised."

"Why? The fact is that many politicians, special interest groups and lobbyists have vested interests that will be disturbed."

"The legislature, without external pressure by the people, will not by its own action institute reform. The one house petition drive is trying to apply this pressure."

Plates Squeezed  
Among the items squeezed this year by the state's money problems are the motor vehicle license plates for 1972.

Instead of receiving a new set of license plates for the coming year, motorists will merely receive a small sticker which will be placed on the lower right hand corner of the rear license plate, on all passenger vehicles, trucks and trailers.

The stickers are made of plastic and will have a gummed backing. All a motorist will have to do is tear off the cover on the backing and stick it to his license plate.

The changeover will save the state about \$1 million, says Secretary of State Richard Austin.

That may not seem like much when the total budget is over \$2 billion, or 2,000 times \$1 million. But when the money situation gets tight, as anyone who has ever been in a tight money situation knows, you start saving every dime you can.

The plans for 1973 call for full-sized plates, but that's not definite.

"It depends on the legislature," Austin says. "If the legislature appropriates only enough money in our budget to provide tabs again next year, we may have to issue stickers for a second time."

The stickers, which may be ordered through the mail for the first time this year, go on sale Nov. 15 for passenger cars.

## JUST REMINISCING

Items Taken from the Files of The Chelsea Standard

### 4 Years Ago...

Thursday, Oct. 26, 1967—

Chelsea Kiwanis is holding its annual halloween kids party Thursday, Oct. 31. Festivities begin in the junior high gym at 6:30 p.m., directly following the UNICEF collection. The Kiwanians will give out noisemakers and judge costumes. Prizes of \$3, \$2, \$1 will be awarded as first, second and third prizes, respectively, for the best costumes in each of the following categories: most comical, most original, spookiest, and most typically Halloween. The Halloween parade, which starts at 7 p.m., will include the fire truck and the various school bands.

Chelsea High school's Bulldogs came within one point of upsetting the South Lyon Lions, but had to settle for a 19-19 tie. This leaves South Lyon still in first place with Chelsea one game behind, in the competition for the Southeastern Conference championship this year. Chelsea's defensive line and secondary again played an outstanding game, cutting off South Lyon's running attack and letting the Lions complete only the short passes. The offensive line proved its ability as it moved a tough Lion defensive line. Included in the Bulldog line were Roy Holiday, Bob Powers, Mike Harvey, Gregg Stephens, Gary Ellenwood, Mike Gaken, Mike Lehmann, and Larry Gaken. Chelsea plays its final home game tomorrow night, meeting the Saline Hornets at 7:30 p.m.

Miss Cora Feldkamp was honored at a surprise party given by members of the St. Paul senior choir for her 63 years of participation in the choir. Miss Feldkamp is the only remaining member of the original choir formed in 1904. She said that she doesn't plan to sing with the choir anymore, but will now enjoy listening to it from a seat among the congregation.

The 15th annual meeting of TLOOCDH & DSOAA (The Local Order of Confirmed Deer Hunters and Deer Slayers of America Amalgamated) held at the Chelsea Rod and Gun Club was the setting for some pretty tall, but undoubtedly true, stories told by participants in last year's hunt. In addition to the story telling, current president, Robert Bauer, and the secretary-treasurer turned over the symbols of office to the newly-elected president Bill Freeman and newly elected secretary-treasurer Fred Fairbrother.

14 Years Ago...  
Thursday, Oct. 24, 1957—

Next Monday, Tuesday and Wednesday, the mobile X-ray unit of the Washtenaw county Tuberculosis Association will conduct a door-to-door clinic in Chelsea, the first ever to be held in Michigan, and believed to be the first ever to be held anywhere in the United States. A similar canvass will be held later in Manchester. The two communities have been selected for this type of X-ray program on a trial basis. If successful, the plan might be adopted for all future residential clinics.

Ronald Huhl, 19732 Pleasant Lake Rd., and David Wolfgang, 113031 Scio Church Rd., are two of the three outstanding Washtenaw county farm boys who have been awarded short course scholarships to Michigan State University. The scholarships are awarded by the Washtenaw County Bankers Association. The third scholarship winner is Lloyd Braun of Ann Arbor.

Leonard Thompson, secretary manager of the Southeastern Michigan Tourist Association, told Chamber of Commerce members that Chelsea has a number of promising tourist attractions at the Chamber's Tuesday night meeting. Thompson said that the

color tours sponsored here by the Chamber are already being advertised nationally, and that the Junior Chamber of Commerce chicken barbecue project can continue to attract ever increasing numbers of people.

Three Chelsea area youths, a Whitmore Lake teen and a Pinckney girl were injured in an automobile collision in Webster township early Monday evening. Chelsea youths were George Mayer, driver of the car, who suffered left knee injuries and lacerations, Robert Smith and Donald Ferguson passengers in the car, who sustained head, face and leg lacerations. The Mayer car was hit by a car driven by James Delanois of Whitmore Lake.

### 24 Years Ago...

Thursday, Oct. 23, 1947—

A double deck cattle truck, loaded with sheep, pigs and calves turned over on US-12 about one half mile east of Manchester Rd., about 4:30 a.m. Tuesday. The driver and his helper both suffered head injuries, and 30 to 50 sheep suffocated when they were pinned beneath the truck. Several of the calves were also injured, and the truck was heavily damaged.

Chelsea upset Milan's Big Reds in a surprise 14-12 win last Friday, ending Milan's 11-game winning streak. Although outweighed in almost every position, Chelsea made up for it with fight and speed. Chelsea had a total 180 yards gained for the evening and Milan had 172 yards. Chelsea had 11 first downs and Milan had 9. Chelsea completed two out of five passes, and Milan completed three out of eight attempts.

Chelsea Kiwanis Club continues making plans for the talent show which will be held Nov. 7 and 8 in the Chelsea High school auditorium. War Bonds worth a total of \$175 will be presented to the first three winners in the amateur competition. Chairman of the event is Paul F. Niehaus.

The Kiwanis Club is also putting the final touches on plans

for the annual Halloween Party. General chairman of the event is Lowell A. Davison. B. A. McLaughlin will serve as parade chairman, H. T. Moore, bonfire chairman, R. D. Lange, entertainment chairman, Charles Cameron, decorations committee chairman, T. C. Smith, noisemakers chairman, Harold A. Jones, chairman of the cider and donuts committee, and J. K. Daniels, prizes and judges chairman.

### 34 Years Ago...

Thursday, Oct. 21, 1937—

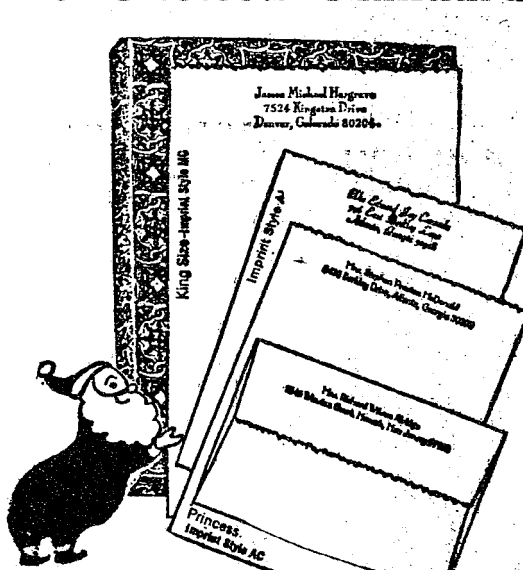
Chelsea's first community fair will be held Saturday, Nov. 13, all day, in the Chelsea high school gym. Entries are open to any boy or girl under 21, and the exhibits must be raised on their own farm. All exhibits will remain until properly checked out, after the evening program. The Kiwanis club will sponsor the event. A program consisting of music by the Chelsea band and orchestra, a milk testing demonstration, and a speaker. Premiums and awards are being donated by Chelsea businessmen. Plans call for housing the livestock and poultry in a tent south of the gym.

Mr. and Mrs. William Atkinson celebrated their 53rd wedding anniversary with a dinner and reception given Sunday at the home of their daughter and son-in-law, Mr. and Mrs. Harry Love, Jackson. Guests included Mr. and Mrs. Carl Gieske of Manchester, and Mr. and Mrs. George W. Atkinson of Chelsea.

George E. Haist, of Lima township, who specializes in Black Top sheep, entered a fleece of wool at the Pacific International Wool Show held in Portland, Ore., the first week in October. Haist's fleece was the champion fleece of the exhibition, and he will receive a silver medal for his entry. His entry was champion fleece at the same show in 1936.

Village officials ask that local residents refrain from burning leaves on any of the village streets. The burning of leaves is forbidden since the streets are surfaced either with blacktop or seal coat which would be damaged by fire. Leaves may be burned in driveways, or will be hauled away by the village if raked into the gutter.

## The Chelsea Standard



## Pre-Christmas Gift Sale

Rytex Deckle Edge Vellum  
Personalized Stationery

Save 50% \$4.95

150 Princess sheets & 100 envelopes... or  
100 King size sheets & 100 envelopes

This way you can give a lot of goodness — it's high quality paper; a lot of style; a lot of usefulness. But most of all you give a gift that says, "I had just you in mind." Because Rytex is custom-made for the individual. Makes an ideal gift for men or women — don't forget the men on your list!

Marvelously deckled paper in white, blue, or grey. Smartly imprinted in blue or grey ink in choice of imprint styles shown. Princess or King size sheets—the choice is yours. You can't go wrong. Because any Rytex Personalized stationery style you choose is correct.

Beautifully Gift Boxed.

### MAIL ORDER COUPON

THE CHELSEA STANDARD  
CHELSEA MICH. 48118  
DECKLE EDGE VELLUM... boxes at sale price of \$4.95 per box.  
SPECIAL BONUS (check) include 50 matching, unprinted, sheets for only \$1.00 more....  
CHECK ☐ Princess White (9400) ☐ King White (9100)  
YOUR ☐ Princess Blue (9450) ☐ King Blue (9150)  
CHOICE ☐ Princess Grey (9460) ☐ King Grey (9160)  
Ink: ☐ Grey Ink ☐ Blue Ink ☐ Imprint MC ☐ Imprint AL ☐ Imprint AR

Imprint Name \_\_\_\_\_  
Street \_\_\_\_\_  
City \_\_\_\_\_ State \_\_\_\_\_ Zip \_\_\_\_\_  
Ordered by: \_\_\_\_\_  
City \_\_\_\_\_ State \_\_\_\_\_ Zip \_\_\_\_\_  
Street \_\_\_\_\_  
☐ Charge ☐ Payment enclosed. (Sorry, No C.O.D.'s)  
Please include Sales Tax...

## Uncle Lew from Lima Says:

### DEAR MISTER EDITOR:

Bug Hookum said he allus had heard that the Army would fold up if it run out of paper clips, but Bug told the fellers at the country store Saturday night that he nexer knowed afore that writing everthing in quadruplicate was so important everwhere. Bug said it ain't no wonder his Full-Employment Plan ain't been adopted by Congress.

You recollect, Mister Editor, that Bug perposed that we grind up all the welfare records and get rid of unemployment by hiring people that's out of work to fit all the pieces of paper back together. Bug said Saturday night he now knows that such a plan would stop the country cold in her tracks.

Bug said he had went to the department store last week to git his old lady one of them no-stick frying pans she's been harping about. First off, the clerk wanted to know which one of the store's charging plans he wanted to use. There was the layaway, the delay, the cards of all kind and somepun called a revolving plan, the clerk said, and afore he got thru all of em Bug said his head was revolving.

When Bug told the clerk he wanted to pay cash American money for the pan, the feller got all rattled and had to go look fer a special book to put down the sale in. Bug said the clerk had to make out quadruplicate copies cause he wasn't used to handling plain money, and he had to turn in the money and give copies to folks that took care of complicated sales involving money. That was progress we can do without, allowed Clem Webster. When we git geared up so it's easier to go in debt than to pay

everything down and nothing the rest of your life, we've got to much progress, was Clem's words. He said he was thinking jest the other day how all the fellers at the store would be arrested if they was in town where they got loitering laws. Clem said loitering was doing nothing and when that gits to be a crime things ain't progressing in the right direction neither.

Furthermore, Clem went on, we had ought to have special places where folks can loiter. They is a heap of things that is better settled when you're setting around loitering than when you go getting fired and throwing bricks at the police in them cities. Part of the trouble in this country now is that we don't stop, talk and listen, was Clem's words. Nowadays, he said, you got to have a appointment fer everthing from getting a oil change to having a tooth fixed, and keeping all them appointments is taking the fun out of everyday living.

Bug was agreed we do a lot of damage in the name of progress, and he was of a mind that we cut down on the fun in other ways. Fer instant, Bug had saw where wimmem quit pushing fer being on pro baseball and football teams when he was all set to laugh at em.

Yours truly,  
Uncle Lew.

### COCONUT SURVEY

A unique, intensive, aerial survey of Jamaica's water resources was recently conducted by infrared sensing, providing data of value to the island-nation's coconut, fishing, and mineral industries.

## SING-ALONG MUSIC at INVERNESS INN

NORTH LAKE  
Saturday Nights - 9:30 p.m. to 1:30 a.m.

Music By

JIM ROMINE and GARY SCRIPTER

YOUR FAVORITE SANDWICHES

SHRIMP, CHICKEN & FISH DINNERS

BEER - WINE - LIQUOR

## IF YOUR ROOF IS HURTIN' Call Burton!

- ★ Old and New Roofs
- ★ Hot Tar and Metal Roofs
- ★ Aluminum Siding
- ★ Aluminum Awning and Storm Doors and Windows
- ★ Seamless Aluminum Eaves Troughs and Down Spouts
- ★ Mobile Home or Trailer Skirting

## COOPERATIVE ROOFING & SIDING CO.

Call 662-5900 or 662-3288

Evenings Call Burton Rethburn, 668-0754



## Gridders of the Week



KEITH HUME (40), a junior halfback, has been playing football since the 8th grade, and is a member of the varsity for the first time this year. He is also a wrestler, and a member of the baseball and basketball teams. He played hockey for the new Chelsea hockey team last year, and will be back in his slot as defensive half again this year, since he found hockey is his favorite sport. He is a member of the high school choir, and was a student council representative during his freshman year. This past summer he worked on a farm, and he now works on Saturday at the Chelsea Lumber Co. Keith is a small game hunter, and a rock music fan. He has six sisters and one brother. He is the son of Mr. and Mrs. Philip Hume, 25 Hickory Dr.

JOHN MANN (10), a 5'11" junior quarterback, is playing his first year of varsity football this year, but has been out for football every year since the 7th grade. He also plays basketball, and is a member of the varsity baseball team. During the summer he is a Little League instructor, and umpires recreation league baseball games. He also finds time to swim, water ski, golf, and camp with his friends. He has been a student council representative for two years, and is also a member of the Congregational church Pilgrim Fellowship. John is the son of Mr. and Mrs. Paul Mann, 637 Flanders.

### Pig Bowl Charity Game Scheduled Nov. 3 at EMU

Local police authorities remind us of the annual Pig Bowl game coming up Saturday, Nov. 7 at 3 p.m. at Eastern Michigan University stadium in Ypsilanti, off of Clark Rd. near the junction of Huron River Dr.

Last year the Pig Bowl game raised some \$15,000 in donations to assist needy families in the Washtenaw county area. Tickets may be obtained from Washtenaw County Sheriff's deputies or most any police office in the area.

### County 4-H Project Committees To Organize Next Monday Evening

An organizational meeting will be held to organize all Washtenaw county 4-H project committees on Monday, Oct. 25, at 8 p.m. at First Methodist church in Ann Arbor. The church is located on the corner of E. Huron and S. State Sts., three blocks east of the 4-H office.

Purpose of the meeting is to invite 4-H leaders, indicating a willingness, to serve on a committee, to assemble and plan project activities for the coming 4-H year. Duncan Sanford, 4-H Youth Agent, said "We hope all 4-H leaders will attend and help us plan these project activities. This is the time when every club can have a strong influence on what the county 4-H program will be this coming year."

### Beach Junior High Adds Intramural Grid Program

The football program at Beach Middle school has taken on a new look this season, as a combined interscholastic and intramural program has been initiated for the first time this year.

The idea of having both a team representing the school in league and area competition, and an intramural program, grew as the number of boys interested in football increased during the past few seasons.

At the present time, there are 77 seventh and eighth graders still practicing after an initial turn-out of more than 90 boys.

Two new coaches have been added to staff the large new program. Bert Kruse, and assistant Randy Johnson, are handling varsity coaching duties this year, and Johnson, Charles Waller and Joe Bear are each coaching an intramural team.

The varsity squad, comprised of approximately 30 boys, all but one of them in the 8th grade, has compiled a three win, no loss record so far this season. The Junior High varsity defeated Saline, 38-0; Lincoln, 28-6; and Jackson Catholic, 20-0.

Regular offensive starters are David Fletcher, and Roger Policht, end; Rex Miles and Matt Merkel, tackles; Craig Sprague, Dennis Bauer, and Mike Kozminski, guards; Eric Prinzing and Jim Marshall, centers; Randy Guenther, quarterback; David Murphy, fullback; and Howard Salter, John Elliott and Kevin Kelly, halfbacks.

## Frosh Grid Team Loses to Vandercook

Chelsea's freshman football team traveled to Vandercook Lake last Thursday to take on the Vandercook junior varsity, and lost the contest, 36 to 12, their first loss in four games.

Vandercook dominated the first quarter. They scored first on a 65-yard pass on their first play after a Chelsea punt, adding two points on the conversion.

Vandercook scored two more touchdowns, one following a long run to the Chelsea two-yard line, and the other on a 35-yard sweep before the first quarter was half over.

Chelsea scored in the second quarter after Perry Johnson intercepted a pass on the Vandercook 30-yard line. Karl Gauss got the touchdown on an eight-yard run. Vandercook also scored once again in the second quarter to lead, 28-6, at the half.

During the second half, the Chelsea defense, led by Don Bollinger, Don Pierson, Dennis Barker, and Ron Kiel, was fairly effective in containing Vandercook's driving offense.

The Chelsea offense scored on a one-yard run to make it 28 to 12 at the end of the third quarter. They threatened to score several other times in the second half, but each time costly mistakes spoiled the effort. The Bulldogs had one touchdown called back after a penalty, and twice fumbled inside the Vandercook 30-yard line.

Vandercook scored their final touchdown in the last minute of the game on a 40-yard run following a Chelsea penalty for pass interference.

According to freshmen coach Bill Bainton, the Bulldogs played their best game of the year after the first five minutes.

"We had the blocking to throw and run," Bainton said, "and Paul Wood made several nice catches, but we just made too many mistakes to win the game."

The freshmen met Tecumseh Wednesday, and will play a home game, their last game of the year, against South Lyon Tuesday, Oct. 26 at 7 p.m.

## JV Loses to Novi, Breaking 29-Game String

The 29-game winning streak of Chelsea's Junior Varsity gridgers was broken by Novi last Thursday, as the Wildcats took a 7-0 decision from the Bulldogs.

The scoring took place in the first half of the game, as both teams were unable to generate a drive during the second half.

Marvin Guster scored for Chelsea on the third play of the first quarter, going 54 yards for the TD.

Novi culminated a second period drive with a one-yard dive for a touchdown, and took the lead with a good extra point kick.

Chelsea drove to the Novi eight-yard line in the second quarter, but failed to make a completion on a fourth down pass attempt.

Leading defensive players for Chelsea were Paul Brown with 14 tackles, Mike Nadeau with 9, John Houle and Dale Poertner with eight each, Rick Miller and John Tandy with seven, Jim Storey with six, Marvin Guster with five, and Jack Hackworth, Keith Kargel, Daryl West and Howard Haselschwardt with four each.

Marvin Guster spearheaded Chelsea's offensive drive, picking up 104 of Chelsea 206 yards. Novi was slightly behind Chelsea in rushing with 157 yards.

Randy Guenther scored on a 65-yard run, and on a 15-yard run in the Jackson game. David Fletcher intercepted a pass for another score, and Kevin Kelly added a touchdown with a 10-yard run.

The varsity met Jackson Catholic at Jackson yesterday, and will take on Brooklyn Columbia Central at Brooklyn, Wednesday, Oct. 28. Their final game will be a home contest, against Dexter, on Wednesday, Nov. 3.

The remaining 45 to 50 players are playing on three intramural teams. The intramural teams are made up primarily of 7th graders, but do include a number of 8th graders as well.

The intramural program is designed to provide more individual coaching, to develop depth and experience at the different positions, and to allow more game-type experience to a wide range of players. The three teams meet each other twice during the season for a total of six intramural games.

Johnson's team has two wins and one tie. Waller's team one win and one loss, and Bear's team two losses and one tie. All games are played on Tuesday and Thursday at 4 p.m.

**CHELSEA FINANCE CORP.**  
\$25 to \$1,000  
For Any  
Worthwhile Purpose

See or Call  
**FRANK HILL**  
at 475-8631

111 PARK STREET  
CHELSEA, MICH.

**Married Male Driver**

Your A-O man will save you money on your car insurance. No surcharge or higher rate. See your A-O man — he's all out for you.

**A. D. MAYER AGENCY, INC.**

"Your Protection Is Our Business"  
Phone 479-5061

115 Park St. Chelsea

**Auto-Owners INSURANCE COMPANY**  
Home Office: Detroit, Michigan

**Jiffy market**  
BIG ENOUGH TO SERVE YOU.....SMALL ENOUGH TO KNOW YOU!  
Corner of SIBLEY & WERKNER RDS.....CHELSEA, MICHIGAN

7 AM - 10 PM  
OPEN 7 DAYS A WEEK!  
PHONE 475-5701

COMPLETE SUPER MARKET

SALE PRICES EFFECTIVE THURSDAY, OCT. 21, THRU SUNDAY, OCT. 24, 1971.

**Store Hours Are 7 a.m. to 10 p.m. 7 Days A Week**

<p>U.S.D.A. CHOICE <b>BEEF LOINS</b> 50-Lb. Average <b>Special Price 99¢ lb.</b> Price includes cutting, wrapping, quick freezing. YIELDS: <b>SIRLOIN STEAKS</b> <b>T-BONE STEAKS</b> <b>PORTERHOUSE STEAKS</b> Always Available: <b>SIDES OF BEEF or QUARTERS</b> See Duane or Ron at the Meat Dept.</p>	<p>CIRCLE A THICK-SLICED <b>BACON</b> 2-Lb. Pkg. <b>99¢</b> FARMER PEET'S <b>SMOKED PICNICS</b> <b>49¢ lb.</b> ECKRICH SMOKED <b>ROPE SAUSAGE</b> <b>99¢ lb.</b> <b>BEEF LIVER</b> lb. <b>39¢</b> ECKRICH <b>SMOK-Y-LINKS</b> 10-Oz. Pkg. <b>69¢</b> FARMER PEET'S <b>RING BOLOGNA</b> <b>65¢ lb.</b></p>	<p><b>FARMER PEET'S</b>  <b>HYSTYLE HAMS</b> Smoked - Pre-Cooked De-Fatted - Semi-Boneless Skinless <b>69¢ lb.</b> The Ham that Everybody Loves!</p>
---	---	--

**JIFFY MARKET**  
**FRESH BAKERY**  
Pies - Cakes - Rolls - Cookies  
Bread - Cup Cakes - Donuts - Others  
Old German Pretzels Wed. & Sat. Afternoons.  
- SPECIAL -  
**FRESH HOME-MADE COOKIES - 49¢ doz.**  
FRESH MERCHANDISE ARRIVES 1 P.M. EACH AFTERNOON.

<p>SUNSHINE <b>Krispy Crackers</b> 1-Lb. Box <b>35¢</b></p>	<p><b>NABISCO OREO</b> CHOCOLATE CREME SANDWICH 10-Oz. Pkg. <b>39¢</b></p>	<p>DURKEE'S <b>BLACK PEPPER</b> 4-Oz. Can <b>49¢</b></p>
<p><b>CIGARETTES . . .</b> Your Favorites <b>\$3.25 Crtn.</b></p>		
<p>BOUNTY JUMBO <b>PAPER TOWELS</b> 120 2-Ply Sheets In Roll <b>29¢</b></p>	<p>CHARMIN <b>TOILET PAPER</b> 4 Roll Pkg. <b>39¢</b></p>	<p><b>FRESCA or SPRITE</b> 8 10-Oz. No-Return Bottles <b>99¢</b></p>
<p><b>KLEEN-MAID BREAD</b> 1 1/4-Lb. Loaf <b>19¢</b></p>	<p><b>R-C COLA</b> 10-Oz. No-Return Bottles <b>8 pac 79c</b></p>	<p><b>SALTED PEANUTS</b> in the shell <b>39¢ lb.</b></p>
<p><b>MICHIGAN COTTAGE CHEESE</b> 24-Oz. Crtn. <b>59¢</b></p>		<p>GET A <b>FREE DOLL</b> made in Hong Kong WHEN YOU BUY ONE KING SIZE 5 lb., 4 oz. KING SIZE <b>cheer \$1.39</b> see our display</p>

**MARATHON GAS PUMPS** LOCATED AT **JIFFY MARKET**  
Gas as well as Groceries - Meats - Beer - Wine - Bread - Pop - Ice Cream - Household Items  
Milk - All at Everyday Low Supermarket Prices!



**MARATHON REGULAR GAS** **33.9¢ gal.**  
Includes All Taxes  
**MARATHON PREMIUM GAS** **37.9¢ gal.**  
Includes All Taxes

It's Getting Cold!  
**PRESTONE ANTI-FREEZE**  
**\$1.79** Gallon

**GAS PUMPS & STORE OPEN 7 a.m. to 10 p.m. 7 Days a Week**

**SPECIAL**

**WILSON'S LO-FAT MILK**

1 Gal. Crtn. **67¢**

OPEN from 6 a.m. to 11 p.m. Every Day.  
OPEN SUNDAYS for Your Shopping Convenience

**GALLUP-SILKWORTH PUMP & PANTRY**  
295 S. Main St., Chelsea Phone 475-7051



Ads  
Taken  
Till 5 p.m.  
Tuesday

# IT'S EASY TO BUY-SELL-RENT- HIRE & FIND WITH

# WANT ADS

Just  
Call  
GR 5-3581

## WANT ADS

### The Chelsea Standard

#### WANT AD RATES

PAID IN ADVANCE—All regular advertisements, 20 cents for 25 words or less, each insertion. Count each figure as a word. For more than 25 words add 2 cents per word for each insertion. "Blind" ads or box number ads, 50 cents extra per insertion. CHARGE RATES—Same as cash in advance, with 15 cents booking charge if not paid before 5 p.m. Tuesday preceding publication. Pay in advance, send cash or stamps and save 15 cents. DISPLAY WANTS—Rate, \$1.10 per column inch, single column, width only. 5-point and 14-point light type only. No borders or boldface type. Minimum 1 inch. CARDS OF THANKS or MEMORIALS—Single paragraph style, \$1.00 per insertion for 50 words or less; 2 cents per word beyond 50 words. COPY DEADLINE—5 p.m. Tuesday week of publication.

ROLL TOP DESK—Ash meat block. Ph. 428-8200. x19

I WILL NOT BE RESPONSIBLE for any debts whatsoever other than my own after Oct. 1, 1971. Sheila Anne Flowers (Mrs. James Wilbur Flowers). 20

SOUP'S on the rug that is, clean with Blue Lustre. Rent electric shampooer \$1. Dancer's. 18

PLEASE GIVE ENOUGH to count. -18

## 1971 Clearance Sale

All of these cars qualify for Excise Tax Return if removed by Federal Government.

1971 Electra 225 4-dr. hardtop (air-cond.) Sticker price, \$5781.80. Sale Price, \$4783.00 (Demo).  
1971 Opel station wagon, auto. trans. Sticker, \$2672.68. Sale, \$2400.

## USED CARS

1970 Buick LeSabre Custom 4-dr. H. T. (air cond.) \$2995  
1969 Olds Delta Custom 2-dr. H. T. vinyl top \$1995  
1969 Cutlass Supreme 2-dr. H. T. (air cond.) Very nice \$2895  
1968 Toronado (air cond.) \$2195  
1967 F-85 Cutlass 4-dr. sedan \$1195  
1968 Volkswagen Ghia \$1295  
1966 Olds 88 4-dr. sedan \$895  
1966 Pontiac 4-dr. sedan (real nice) \$895  
1965 Pontiac Grand Prix, vinyl top \$595  
1965 Dodge 4-dr. sedan \$195

SPRAGUE  
Buick-Olds-Opel, Inc.  
1500 S. Main St., Chelsea  
Phone 475-8664 18tf

FOR RENT—New duplex. Carpeted, 2 bedrooms, full basement, stove, refrigerator. North Lake area. No children or pets. Phone 426-3737 evenings. x19

FOR SALE—Mare, 9 years old, half Arab and half Morgan. Gentle, but spirited. Best offer. Ph. 769-6059 after 6 p.m. (Oct. 21 and 22 only call before 2 p.m.) x20

FOR SALE—Revco 700-lb. capacity chest-type freezer, 1 month old. \$239 new, asking \$200. Going in service. Phone 475-8515. x18

FOR SALE—Heavy type hens, good layers, or fine eating. Ph. 426-8007. x18

## All Insurance Needs

In the convenience of your own home — or mine

N. H. Miles, Allstate

Call GR 5-8334 after 6 p.m. 45tf

## WANT ADS

BOARDING, trimming, training. Town and Country Kennels, Jackson Rd. at Baker. NO 3-7200. 7tf

## Gem Travel Trailers and Campers

### PICK UP COVERS

4" \$100.00  
26" \$179.00 and up  
Triangle Sales  
Chelsea 475-4502 40tf

## CLOGGED SEWER Reynolds Sewer Service

We Clean Sewers Without Digging  
Drains Cleaned Electrically  
FREE ESTIMATES  
2-YEAR GUARANTEE  
Phone Ann Arbor NO-2-5277  
"Sewer Cleaning Is Our Business—  
Not a Sideshow" 38tf

PLEASE GIVE ENOUGH to count. -18

## This Week's Special

1968 Chev  
Station Wagon  
V-8, Automatic  
ONLY  
\$1295.00

## USED CARS

'71 Lincoln 4-dr., air  
'70 Galaxie 2-dr. hardtop  
'70 Thunderbird, with air  
'69 Galaxie 500 2-dr. hardtop  
'69 Galaxie 500 4-dr.  
'69 Custom 500 4-dr.  
'68 Squire wagon  
'67 Mercury 2-dr. hardtop  
'66 Buick LeSabre  
'66 Galaxie 500 XL with air

## TRUCKS

'69 Dodge 1/2 ton  
'69 Ford 1/2 ton  
'67 International 1/2 ton pick-up.  
'65 Ford 1/2 ton \$795

## See Us About Demonstrators and Driver Education Cars

## PALMER FORD

Open Mon., Wed., Thurs., Till 9:00  
Chelsea GR 5-3271 x18tf

KITTENS—Large assortment, \$1 each. Ph. 475-7486. x18

LARGE SINK—54 inches, one basin and two sides with Dishmaster faucets, \$25. Man's hunting suit, size 46, \$25. Also 10' by 15' green 501 nylon rug with mat. Ph. 475-7486. x19

FOR RENT—Furnished 2-bedroom mobile home, on two acres, couples preferred, no children or pets. Deposit required. Call weekdays after 6 p.m. Detroit 825-6281. x19

FOR SALE—Kenmore washer and dryer, poor, but working condition, \$25. Call 475-5001. 18

## WANT ADS

ROBERT PATRICK for home improvement, building and maintenance. Ph. 475-7460. 45tf

PLEASE GIVE ENOUGH to count. -18

HAMMOND ORGAN teachers wanted to teach in their own homes. Call Grinnell Brothers, Ann Arbor, 662-8687. 34tf

PLEASE GIVE ENOUGH to count. -18

CALL FRANK for all your carpet cleaning jobs, morning or week-end. Needs only 3 hours to dry. Only 10c per square foot. Phone now for free estimate, 761-4328. All work guaranteed. 33tf

PIANO TUNING, Chelsea and area. Facilities for reconditioning and rebuilding. Used piano sales; reconditioned grands and verticals. E. Eklund, 426-4429. x50tf

## Contractor Servicing Chelsea, Dexter and Manchester Areas

Complete Home Remodeling  
Inside and Outside

Specializing in extra living space, recreation rooms, kitchens and paneling. Installing all aluminum products, 6" eavestroughs, custom-made awnings, windows and doors, aluminum siding in many selected colors and styles.

Please Call

DALE COOK  
Chelsea 475-8863 20tf

## CHELSEA School District Five Beautiful Country Sites in Noah Heights Adjacent to Half Moon Lake State Park

Model Open 2-6  
Sat. and Sun.

Any time by appointment

## Featuring

—Carpeting throughout  
—2-car garage  
—Full basement  
—Hotpoint stove and refrigerator  
—All aluminum exterior  
—Concrete porches, sidewalk, gravel drive  
—Storms and screens

COME OUT AND TALK TO US  
ABOUT OUR WIDE VARIETY  
OF HOME PLANS.

We know you will be pleased.

## W. C. Weber Construction Co., Inc.

12290 Jackson Rd., Chelsea, Mich.  
475-2828 683-1935 475-4977

CHELSEA'S PREMIER BUILDER x18tf

PLEASE GIVE ENOUGH to count. -18

## REAL ESTATE

6 ACRES, Sylvan township building lot. Price: \$8,000. Land contract available.

SYLVAN TOWNSHIP—Well located 64 acres excellent, level land.

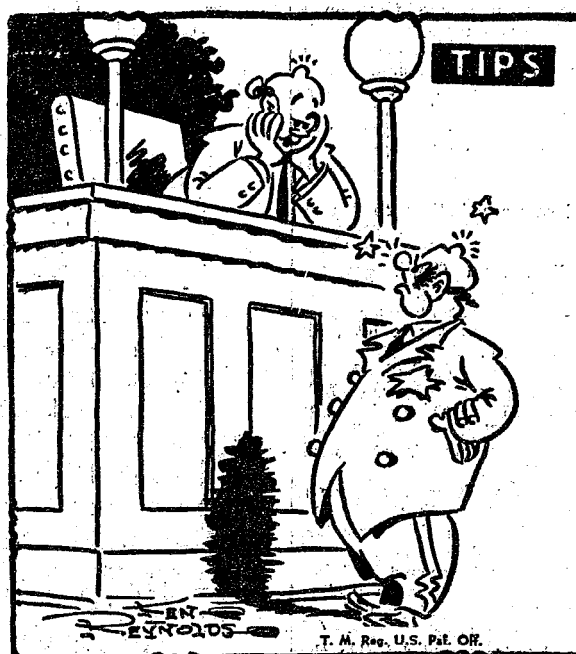
## R. D. Miller REAL ESTATE

Real Estate Broker  
475-7811  
15775 Cavanaugh Lake Rd.  
Chelsea, Mich. 14tf

## ELECTROLUX VACUUM CLEANERS

SALES AND SERVICE

JAMES COX  
Ph. 428-2931 or 428-8221  
Manchester



"She was kind'a touchy about the way we said she drove that car she got in the Standard Want Ads—wasn't she!"

## WANT ADS

PLEASE GIVE ENOUGH to count. -18

## NO HUNTING SIGNS

Now available  
at

Chelsea Standard  
300 N. Main St.

FOR SALE—1963 Mercury Meteor, 4 new tires, \$150. Phone 475-8426 after 5 p.m. -18

## 475-8629

T-TREMENDOUS setting... large oak trees... beautiful view... Island Lake frontage, 2-bedroom brick executive type ranch home, with all the extras, plus a year around cottage for income purposes. Terms.

H-HONEST, you wouldn't believe the lovely renovation that has been done on this year around home adjacent to and with a view of Patterson Lake, Terms.

O-ON the edge of Chelsea... 3-bedroom brick ranch home with formal dining room, fireplace, family room, and full basement.

R-ROLLING building sites Chelsea schools, a great view. Terms.

N-NOTHING but seclusion... 6 acres, barn, 2-car garage and a 3-bedroom farm home tucked away in a yard of large oak trees. Terms.

T-TO the executive who wants a luxurious home close to schools; 5 bedrooms, a magnificent family room and a kitchen every woman dreams about. Enjoy privacy while still within the village.

O-ONLY across the street to the school yard, yet tremendous privacy as this home has the living room and kitchen facing a lovely back yard. Fireplace, recreation room—a great place for a young family.

N-NOW is the time to enjoy your retirement in this 3-bedroom home close to town. Nice yard, large living room.

## MULTIPLE LISTING REALTORS

## 475-8629

Eve: 475-2064, 475-8857 18

GARAGE SALE—Saturday and Sunday, Oct. 23 and 24, 10 a.m. to 5 p.m. Furniture, antique stool, bed with new mattress, Buck's County Hardrock Maple double bed, rocker and chairs, choice dishes, rugs, paintings and framed prints, many unique items. 2000 South Lake Rd. off Roepke Rd. Phone 475-1134. x18

RUG BRAIDING CLASSES are now being formed. For information call 475-1242. 20

## WANT ADS

MEL HARTMAN, residential builder. Free estimates: houses, garages, kitchens. Flat work and roofs. Call 878-6514. -18tf

## A fine selection of New and Used Cars for immediate delivery

## Harper Pontiac Sales & Service

475-5311  
Evenings, 761-2999 14tf

## KNAPP SHOES

For Cushion Comfort  
Robert Robbins  
475-7282 48tf

FOR SALE—Push lawn mower, man's tan shoes, sport coat, sewing cabinet, man's bath robe, 4 ladies wool sweaters, odds and ends. Phone 475-8511. -18

ANNUAL SPAGHETTI DINNER and Open House Nov. 7, at St. Louis school on Old US-12, Chelsea. Serving from 12 to 4 p.m. Tickets are available at the door. Adults \$2.00, children through 12, \$1.50. 20

FOR RENT—Quiet, newly decorated, carpeted room near downtown Chelsea for working woman. Phone 475-8058. 18

## FORMAL WEAR

### RENTAL SERVICE

Proms - Weddings - Special Events  
6 different colors.

## Foster's Men's Wear

## CHS Senior Class

### MAGAZINE

### SALE

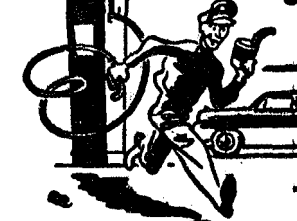
Thursday, Oct. 21

Monday, Nov. 8

Please save renewals for a member of the class.

Profits used for Senior Trip. 19

## Always at Your Service on the Double Quick!



Looking for heads-up auto service? Look no further. That's us! Always on our toes to serve you promptly, efficiently, courteously!

## PURE OIL PRODUCTS

## JIM'S PURE SERVICE

Tires - Batteries - Tune-Ups - Brake Service - Wheel Alignment  
PHONE 475-2822 501 SOUTH MAIN

## WANT ADS

RADIO AND TV REPAIR. Bill Smith and Bob Lindsay. Ph. 475-4374. x11tf

WANTED—Roll-top desk and round table. Ph. 428-8200. x19

JUST RECEIVED—Four rolls Lee's rubber backed commercial carpet. Ideal for kitchens and family rooms. Four colors. Regular \$6.95, Sale \$4.95. Merkel Brothers. x18

## SPIKE'S

### FLEA MARKET

ANTIQUES and COLLECTIBLES

Every Saturday  
and Sunday

11 a.m. to 7 p.m.

Auctions  
Every Saturday

at 7 p.m.

Dealers and public invited.

4065 Page Ave.  
Michigan Center, Michigan  
(Page Ave. Exit east 7/10 mile)  
Phone (517) 764-0250 x18tf

APPLES—McIntosh, Jonathan, Greening, Spys. Bring 'em on container. \$2.50 bushel. Norwin Lesser, Island Lake Rd., Dexter. x18

WANTED—Painting, interior and exterior, and general cleaning. Reasonable rates. Call 475-8594. x20

## HOUSE FOR SALE

75-year-old remodeled home at 315 Garfield, Chelsea. 3 bedrooms, study upstairs. New kitchen with built-ins. Formal dining room; fireplace in living room-den; new carpeting, drapes downstairs; 1 1/2 baths. By owner. Call 475-7305. x20

## FARMS WANTED

We have a specific prospect for a farm of 80 acres or more with a large old home that can be remodeled.

We also have prospects for acreage, with or without buildings. No limit to size.

We will be glad to call and discuss your property with you.

Over 200 salesmen working for you through our multiple listing service.

## Spear & Associates

REALTORS  
1935 Pauline Plaza  
Ann Arbor, Mich.  
Bus. 769-5750  
Res. 769-9380 x17tf

FOR SALE—3 rooms nylon carpeting. Blue and green tiled. \$3.50 a yard. Phone 475-7402. x18tf

FOR SALE—2 adorable miniature dachshund puppies \$30 each. Call after 4 p.m., 475-2875. x18

## Real Estate For Sale

OVERLOOKING INVERNESS golf course—New 3-bedroom brick, full basement, garage. Brand new. \$48,500.

SAME VIEW—3-bedroom, aluminum siding, 2 1/2-car garage. \$37,500.

EXECUTIVE HOME—1-year-old, 3 bedrooms, family room with fireplace, central air conditioning. 2300 sq. ft. 1 1/2 acre lot. Close to town. \$60,000.

## CLARENCE WOOD

### BROKER

Efficient PERSONAL Service  
646 Flanders St.  
Phone 475-2033 18tf

## APPLES

Spies, Yellow Delicious, Winesaps \$3.00 per bushel.  
(Smaller amounts, too.)

## Sweet Cider and

### Colorful Fall

### Decorations

Come out and browse.

Peterson's Orchard  
Corner Hadley & Bartell Rd.  
Unadilla

Hours—Friday, Sat., Sunday  
11:00 a.m. to 6 p.m. 19

## WANT ADS

XEROX COPIES made. Merkel Brothers. 41tf

PATCHING and PLASTERING. Call 475-7489. 38tf

WANTED—Carpenter to put in some windows. Phone 475-2471. 18

FOR REAL DOLLAR SAVINGS be sure and see us before you buy any new or used car. Palmer Motor Sales, Inc. Your Ford Dealer for over 50 years. 2tf

FOR SALE—GE electric dryer in good condition. Norge washer, needs repair. Both for \$30. Call 426-8893. -31

## Custom

### Kitchen Cabinets

### and

### Formica Tops

Made to Order

475-2857 32tf

## G. G. HOPPER

Building Contractors  
Phone GR 5-5581  
Gregory 498-2148 40tf

## 2-CYCO FUEL

For All 2-Cycle Engines

## WHITE GAS

Available at

## Gateway

### Sports Centre, Inc.

PRINTING from John's Shop—for weddings, anniversaries or any occasion. Satisfaction guaranteed. Prompt service, reasonable prices. Phone 475-7500. -21

ALCOA SIDING with Remodeling—Since 1938. Prompt service, professional workmanship. William Davis Contractor. Ann Arbor, Mich. Estimat. no obligation. Phone (313) 683-6635. Completed work near you. x23

## Hearthside Yarn Shop

5480 Conway Road

Yarns, needles, accessories

Free instructions in knitting and crocheting with follow-up assistance.

Orders taken for hand-made items.

Ph. 475-2014 36tf

## Used Remington

742 - 30-06 Automatic Deer Rifle

## Used Savage 12 Ga.

Automatic Shotgun

## Chelsea Hardware

Phone GR 9-6311 18

## Unusual Opportunity

With a company on the move doing business in United States, Canada and 16 countries in Central and South America, needing 1,500 more men this year, request crop service sales representative in Michigan to assist in crop service department in agricultural field. Do not answer unless you are genuinely interested in growing with a growth company, and earning top dollar. Recent agricultural background beneficial. Should you qualify, personal interview will be arranged. Apply at once to Na-Churs Plant Food Company, Box 500, Marion, Ohio 43302, attention: Otto Hannewald, sales manager. x18



WANT ADS

SEE US for transit mixed concrete. Klump Bros. Gravel Co. Phone Chelsea 475-2530, 4920 Love and Rd., Grass Lake, Mich. x101f

**MARY WOLTER**  
Real Estate  
7421 Dexter-Pinekey Rd.  
near North Territorial  
Phone 24-hour service  
426-8188, 426-8160 or 663-2954

ATTRACTIVE DUPLEX—Almost new, all electric, large rooms, tile baths, range and refrigerator, utility areas, sliding glass door to private back patio with lovely view of hill, fenced yard, one large bedroom each unit, black top road, near N. Territorial, Dexter schools.

PORTAGE LAKE—Front lot—60' by 175', quiet location, end of season bargain, only \$10,000.

CHARMING old farm home—on 11 acres, M-36 and Plainfield Rd., large barn, four bedrooms, structurally sound and liveable, only \$92,000. Bank will mortgage. Shown by appointment only.

PATTERSON LAKE—FRONT—2 bedroom, year around home, good condition, nice and clean, fenced yard with large trees, safe beach and dock, \$23,000. Bank will mortgage.

JUST REDUCED to unbelievable price of \$19,900. Lake-front, 2 bedroom, furnished, year-round, six years old, aluminum siding, fireplace, hardwood floors, part basement, scenic view, good location on chain of lakes. Hurry if you want a bargain.

60 ACRES—30 acres in woods, 30 in peat, planted in sod, four-inch casing on deep well, has small home and two old trailers that can be replaced. All this, only \$44,000.

DEXTER SCHOOL AREA — 4-family income, nestled in grove of pine trees, with riverfront easement, income \$645 a month. Shown by appointment only.

**MARY WOLTER**  
Real Estate  
7421 Dexter-Pinekey Rd.  
near North Territorial  
Phone 24-hour service  
426-8188 or 426-8160  
or 663-2954

PLEASE GIVE ENOUGH to count. x18

PRIVATE REST HOME—Private, carpeted room available, 14 years experience. Manchester phone 426-8595. x18

JANITOR WANTED approx. 4 hrs. per night, 7 days a week. Write Box 006, care of Chelsea Standard. 161f

FOR RENT — Apartment, 2-bedroom, completely furnished, modern, private entrance. Adults only. May be seen at 552 McKinley, Chelsea. x18

WATKINS QUALITY PRODUCTS. Famous for vanilla and spices. Peter Miller, phone 426-4126 after 4:30 p.m. x22

WANT ADS

FOR SALE — Decca electric guitar, used one month. Also, size 9E football shoes, only used once. Phone 668-8228. x461f

PLEASE GIVE ENOUGH to count. x18

ASBESTOSLINE Semi-plastic waterproofing—for roofs, water tanks, foundations, etc. 5 gallon buckets. Price reduced 50%. Phone NO 2-0517. x18

**CHELSEA AREA**

100 Acre GOLF COURSE, 6 ponds, 4-bedroom remodeled farm home, 10 minutes west of Chelsea. Priced to sell.

17 ACRES, brick Cape Cod home, located east of Chelsea on Trinité Rd. Excellent location.

LARGE 4-BEDROOM Early American home, centrally located for Chelsea schools, 2-car garage, 2 full baths. Priced to sell.

5-YEAR OLD Colonial, 3 bedrooms, attached garage, dining room, family room. Priced to sell at \$31,900.

10-ACRES, large 5-bedroom farm home, land contract, possible. Barns and outbuildings, natural woodwork. \$35,500.

ALL-BRICK RANCH HOME on 1 1/2 acres, family room, fireplace, dining room, 2-car attached garage. Between Chelsea and Ann Arbor. Chelsea schools.

HALF MOON LAKE—2 bedroom, utility room, 2 lots, fireplace, electric heat. \$24,900.

10 ACRES, wooded. \$5,500.

10-ACRE PARCELS between Chelsea and Dexter. Land contracts possible.

3-ACRE BUILDING SITE, trees.

**Frisinger Realty Co.**  
Chelsea 475-3681  
George Frisinger, 475-2903  
Paul Frisinger, 475-2621  
Herman Koenn, 475-2613  
Hope Bushnell, 475-7180

Serving  
Ann Arbor  
Chelsea  
Dexter  
Manchester

Member of Multiple Listing Service 171f

LAND CONTRACTS PURCHASED. ED. Call R. A. McLaughlin, 475-8883 or (617) 366-7765. x121f

IRENCHING—Water, electrical lines, footings, etc., 4 to 14 inches wide, 0 to 6 feet deep. Call Charles Slocum, 475-7611 evenings. x61f

EXPERIENCED CHILD CARE in my home, any time, Phone 761-8701 after 6 p.m. x51f

APPLES—Pick your own. Apple Hill Orchard. Fresh cider and donuts. Open daily 9 a.m. to 6 p.m. 4260 Willis Rd., 1/2 mile east of Ypsilanti Hospital off US-23. Phone 434-2828. x131f

WANTED—Older boy or man to do yard work. Phone 475-8981. 19

WANT ADS

GUITAR INSTRUCTION. Classical, folk, pop. Emphasis on theory. Only \$3.50 for 1/2 hour. Phone 475-1129. x121f

FOR RENT—Fair Services Center for meetings, parties, wedding receptions, etc. Weekdays or weekends. Contact John Wellnitz, phone 475-4431. x27

WILL DO BABY-SITTING in my own country home on Cavanaugh Lake Rd., by elderly lady. Any age. Phone 475-8033 anytime. 23

FOR SALE—8' Fischer pool table, 1-piece marble top. Has all equipment, like new condition. \$400. Phone 475-5101. x18

YOUNG RESPONSIBLE secretary would like one-bedroom apartment. Phone 475-1279 after 6 p.m. 171f

WORK WANTED — Carpenter wants part-time work. Reasonable rates. Satisfaction. Remodeling and all carpentry work. Phone Gregory 498-2539. x20

CUSTOM TAILORING — Call Jim's Tailor Shop, 475-2805. 171f

FOR SALE—Williamston furnace, 124,000 B.T.U.'s. Call 475-7216. x18

FOR SALE—Used Rupp mini bike, excellent condition, \$150. Call 475-8126 after 4 p.m. 19

TRAVEL TRAILER — 13-ft. and up; 10x55 ft. trailers. John R. Jones Trailer Sales, Gregory, Mich. Phone 498-2535. x39f

CAR RENTAL by the day, week, and week or month. Full insurance coverage, low rates. Call Lyle Chriswell at Palmer Motor Sales, GR 5-3271. 251f

CAR & TRUCK LEASING. For details see Lyle Chriswell at Palmer Motor Sales, GR 5-3271. 491f

PLEASE GIVE ENOUGH to count. x18

FOR SALE—Year-around home at Pleasant Lake, 12 miles north of Jackson. 5 rooms and bath, large breezeway and storage room. Large lot with lots of trees and shrubs. Ken Beverly, 107 Water St., Stockbridge. Phone 851-7552. 151f

FOR SALE—Meyers 7 1/2 ft. snow plow. Hydraulic electric lift. Used only one year, \$200. 4998 South Lake Rd., South Lake. Call 475-2748. x19

NEW 2-BEDROOM, maintenance-free home on two and one-half acres. 6% land contract available. 3175 Chamberlin Rd., Dexter. x18

NEIGHBORHOOD SALE—Thurs., Oct. 21, 9 a.m. to 9 p.m., 2921 S. Fletcher Rd. We have everything. Check our table of handmade gift suggestions. x18

FOR SALE — Potatoes, Martin Ruhlig, Jr., 11296 Island Lake Rd., Ph. 426-3161. x21

LADIES—Earn \$7 to \$10 an hour by showing Bee-Line fashions, part-time or full-time. Call 423-4549 or 423-4651. x19

FOR SALE — Sweet cider, 18880 McKinley Rd., 2 miles past North school, Chelsea. x18

WANTED — Babysitting in my home. Responsible. References. Phone 475-7868. x18

WE HAVE LOST fluffy, small, black and white dog, near South school. Child's pet. Please Reward. Phone 475-2954. 19

FIREWOOD — You pick up. Very reasonable. Ph. 475-8323. 181f

WANT ADS

REPAIR SERVICE for household refrigerators, freezers and garbage disposers. Call Bill, 426-8314. x121f

DO YOU NEED masonry work done? Phone Ken Young, 426-2942. Basement laid for 50c per block. Free estimates on brick work and fireplaces. x221f

FOR RENT—Furnished, small, second-floor apartment, for one or two persons. Heat furnished. Phone 475-8469 after 6 p.m. 171f

APARTMENT FOR RENT — First floor, one bedroom, stove and refrigerator furnished. Ph. 475-3911. 181f

HELP WANTED—House work by the day. Ph. 475-7732. 22

FOR SALE—1966 Ford Galaxie 500, automatic, V-8, 4-dr. hardtop, power steering and brakes, good body and engine, 2 new tires, \$695. Phone 475-2318. 181f

PAPER DRIVE—South Elementary 4th grade children will canvass Thursday and Friday, Oct. 21 and 22. Papers may also be delivered to South school. 18

LOST—Half Siamese females; one cream with tiger points and blue eyes, and on Sept. 12, silver pointed tiger, white on chin and under nose. Island Lake at Wexner. Answer to Samantha and Susie. Reward. Call Dr. Clark collect, (313) 356-7390, between 9 a.m. and 6 p.m. weekdays. 25

FOUND—10-week-old black puppy, tan feet, collar mark, at M-52 and Wexner. 14433 Island Lake Rd. 19

OFFICE CLEANING wanted in Chelsea by experienced woman. Phone 475-2027. x19

DOLL REPAIRING—Antique dolls repaired and dressed. Will buy old dolls and parts. 426-3569. x20

REFRIGERATOR for sale, \$30. Ph. 475-7548. 18

FOR SALE — Double snowmobile trailer. Ph. 475-8005. 19

**THANK YOU**  
We wish to thank all those who assisted us during Harold's recent hospitalization. Special thanks to neighbors who sowed the wheat, and to the young men who have helped with milking chores. The get-well cards and visits were most enjoyable, and your kindness most appreciated. Harold Sias and family.

**THANK YOU**  
You, the many friends and neighbors of a wonderful man, Gottlieb Bollinger, shall always be remembered for your many kind thoughts and deeds. You have our sincere thanks. The entire family.

**THANK YOU**  
To our many friends, neighbors, relatives and fellow workers, our most sincere thanks to you for your generosity and help in our hour of need after our fire. Words cannot express how we truly feel. All we can say is thank you and in this small way show our deep appreciation for your caring. Our heartfelt thanks to one and all. Mr. and Mrs. Fremont Boyer and family.

School Board Briefs

Present at the Oct. 18 meeting of the Chelsea Board of Education were President Storey, Trustees Smith, Koenn, Haselschwardt, Irwin, and Schafer, Superintendent Cameron, Business Manager Mills, Principal Lapandowski, and several guests.

Meeting called to order at 8:15 p.m. by President Storey.

Motion by Irwin, supported by Smith, to go into executive session at 8:15 p.m. All ayes.

Meeting called back to order at 8:50 p.m.

Motion by Haselschwardt, supported by Irwin, to accept the minutes of the Oct. 4 meeting as corrected. All ayes.

Chairman Koenn of the Business, Administration and Finance committee, reported on the recommendations of the committee (1) that \$3,000 be included in the 1971-72 budget to hire cafeteria supervisors, but that hiring be held up until a later date, as approved by the Board of Education. (2) That \$38,000 be included in the 1971-72 budget as the total for capital outlay. (3) That the total board discuss the request for \$2,500 for the athletic fund, and (4) That the old Junior High school site be sold.

Trustee Smith, chairman of the Public Affairs committee, reported on the recommendation of the committee that \$1,000 be included in the 1971-72 budget for printing and publishing of a school district news letter to be sent to parents and registered voters.

Trustee Schafer, of the Planning committee, reported on the recommendations of the committee that (1) the old Junior High school site be sold, and (2) that a future need for school facilities be discussed and studied.

Motion by Koenn, supported by Schafer, to sign the contract of Mrs. Greta Welton as a secretary in a secretarial pool to be paid with funds from Public Law 92-54 upon the recommendation of the business manager. All ayes.

Motion by Irwin, supported by Haselschwardt, to sell two 1964 Ford school buses to the Grace Bible church of Ann Arbor for \$800 each. All ayes.

Business Manager Mills presented a financial statement as of Oct. 16, and indicated that \$100,000 has been borrowed for operating purposes.

Superintendent Cameron reported on the formation of a drug education committee to develop a K through 12 drug education curriculum. He also reported that the high school student council will supervise the cafeteria on a one-month trial basis.

Trustee Schafer reported on the Michigan Association of School Boards Convention held in Detroit, Sept. 17 through 19.

Motion by Irwin, supported by Schafer, to sell the old Junior High school property. All ayes.

Motion by Irwin, supported by Schafer, to place \$3,000 in the 1971-72 budget for cafeteria supervisors to be hired at a later date with board approval. All ayes.

Motion by Koenn, supported by Schafer, to include \$38,000 in capital outlay in the 1971-72 budget. All ayes.

Motion by Schafer, supported by Koenn, that \$2,500 be included

In the 1971-72 budget for the athletic fund to make total anticipated revenues of \$15,800 with excess revenues to go into the athletic fund and be spent only with board approval. Ayes: Smith, Koenn, Haselschwardt, Irwin and Schafer. Nays: Storey.

The drug survey conducted in the Chelsea School District last spring was discussed. Mrs. Gary Albrecht and Mrs. Hal Pennington discussed the film "One Minute To Choose," produced by the Cunningham Drug Co., and requested that the film be shown to the high school students. It was the consensus of the board that the film be shown in the school district, and that it be shown on Nov. 1 with an evening showing for parents Nov. 1 at 8 p.m. in the high school auditorium.

The evaluation of the superintendent will be conducted by the Board of Education on Nov. 2.

Public Schools Count 2,448

The official count of students in the Chelsea School District, taken Oct. 1 and reported to the state on Oct. 15, shows a total enrollment of 2,448 in the public schools this year.

The count, which is used in determining the Membership State Aid of a school district, must be reported by Oct. 15, and audited by the Washtenaw Intermediate School District by Dec. 15.

According to School District Business Manager Fred Mills, the count is approximately that estimated earlier in the year, and will not affect the tentative budget established by the school district's administration.

Of the 2,448 students enrolled, 770 are in Chelsea High school, 445 are enrolled in North Elementary schools and 584 are enrolled at South Elementary.

This year's enrollment figure shows an increase of 34 students over last year's count of 2,414, an addition of nine high school level students, 28 junior high school level students, and a loss of three grade school pupils. Last year's total enrollment figure for North and South schools was 1,032.

Chelsea School District has grown by some 310 students since the 1967-68 count of 2,138.

Not included in the membership figures for the Chelsea School District are 60 students at the St. Louis School for Exceptional Boys, and 39 elementary grade pupils at St. Mary's school.

**Old Junior High Site . . .**  
(Continued from page one)

dure to recommend to the board for the selling of the property.

According to School District Business Manager Fred Mills, the joint committee will probably make a recommendation to the board sometime in November.

Telephone Your Club News To GR 5-3581.

**TODAY'S THOUGHT**  
By LOUIS BURGHARDT

Should not these questions be thought about on Veteran's Day?

Is it not a good day to remember war brings a legacy of bitter memories? . . . Should we not remind ourselves how a world can go mad; show ugly mob-madness at its worst? . . . Is not Veteran's Day a good day to hope and pray that memories of "madness" be combined with a realization that war gratifies the very worst instincts of man? . . . It is not a good day to realize WAR IS HELL—anywhere on earth? . . . Is it not a good day to realize there has NEVER been — nor can there ever be — a feast of victory? . . . That war can only bring on a feast of destruction, disaster and death? . . . Above all, is it not a good day to prayerfully plead for God's help for all youth everywhere to give their energies — instead of their lives — to build a better future for themselves, their children and their children's children? . . .

Will you join us — and others — in such prayer? . . .

BURGHARDT FUNERAL HOME, 214 East Middle Street, Chelsea, Mich. Phone GR 5-4141.

**Your Contribution to CHELSEA COMMUNITY CHEST**

**Supports 47 State and Local Service Organizations**

**HOW MUCH ARE YOU GIVING FOR EACH ONE?**

**Give Generously Oct. 10th thru Oct. 23rd.**

**FARMERS' SUPPLY CO.**  
PHONE GR 5-5511

Beef 'em up with tested FEEDS

More profits per pound of gain! Get your steers ready for early market, with tested, fortified Cattle Feeds to beef 'em up . . . fast.

Complete feeding rations for all your livestock, poultry.

1000 individual personal address labels \$1.50

Now Available at The Chelsea Standard

**—SPECIALS—**

LEAN, TENDER  
**Cube Steaks . . . lb. 99c**

ECKRICH  
**Roasted Sausage . . lb. 85c**

LARGE 6-OZ. PKG.  
**Jell-O . . . . . 2 for 37c**

NO. 303 CAN DEL MONTE  
**Cut Green Beans, 2 cans 45c**

NO. 2 1/2 CAN VAN CAMP'S  
**Pork & Beans . . 2 for 55c**

**KUSTERER'S**  
FOOD MARKET  
DIAL 475-2721 WE DELIVER

**Last Payment on 1971 Christmas Club Accounts will be due on or before Saturday, Oct. 30.**

**This Bank will be CLOSED MONDAY, OCT. 25 for VETERAN'S DAY HOLIDAY.**

**CHELSEA STATE BANK**

Member Federal Reserve System **FDIC** Member Federal Deposit Insurance Corp.



## Community Calendar

OCTOBER 1971
S M T W T F S
1 2 3 4 5 6 7
8 9 10 11 12 13 14
15 16 17 18 19 20 21
22 23 24 25 26 27 28
29 30 31

Order of Eastern Star installation of officers, Saturday, Oct. 23, 8 p.m. at the hall.

If you are interested in the aims of the Friends of the Library, come to the meeting Monday, Oct. 25, 8 p.m. in the library club room.

VFW social meeting, Monday, Oct. 25, 8 p.m. in Rebekah Hall. Guests welcome.

Cub Scout Pack 415, Sunday, Oct. 24, 4:30 p.m. at St. Louis school.

Chelsea Community Fair Steer Club, organizational meeting, Oct. 25, 8 p.m., in the Chelsea High school Ag. room.

Special Fair Board meeting, Oct. 27, 8 p.m. at Fair Services Center.

Chelsea Suburbanettes club, Oct. 21 at the home of Mrs. Art Stoll. Co-hostess, Mrs. William Van Riper. Speaker, anyone bringing a guest please call the hostess.

American Legion and Auxiliary hospital equipment available by contacting Loren Keezer at 476-2766 or 476-3431.

TOPS Club at library, Wednesday afternoon group, 12:30 p.m. For information call 426-4549. Tuesday evening group, 8 p.m. For information call 476-8952.

Esther Chapter, Oct. 21, 8 p.m. at the home of Lauryn White.

Cub Scout Pack 445, 3rd annual family hayride, Saturday, Oct. 23, 6 p.m. at Stocks.

Modern Mothers, Oct. 27, 8 p.m. at the home of Mrs. Richard Cook for a Halloween party.

Paper Drive will be sponsored by the 4th grade class at Chelsea South Elementary school. Children will be canvassing the town Thursday and Friday, Oct. 21 and 22. For those who would like to deliver the papers to South school there will be a place ready for your papers. Thank you for your help.

Inquiries regarding the Chelsea blood bank may be directed to Harold Jones in the event that Mrs. Dudley Holmes is unavailable, or to Mrs. Pauline McKenna, American Red Cross in Ann Arbor, 971-5300.

Chelsea Social Service, second floor of the Municipal Building, is open each Tuesday and Thursday, afternoon from 2 p.m. to 5 p.m. to assist persons with problems, either through counseling, or referral to other agencies, when indicated. Limited financial help may be given. The office also maintains a clothing depot for new and used clothing and bedding which is given without charge. All visitors welcome. Phone 476-4581.

Christmas Idea Open House, Monday, Oct. 25, 1 p.m. to 9 p.m., Tuesday, Oct. 26, 10 a.m. to 9 p.m. Rural Activities Center, Saline. Ann Arbor Rd. Idea exchange on holiday decorations, gifts, and holiday food. Open to the public, free of charge. All women's organizations in area are invited to attend and exhibit. Sponsored by County Past Chairmen's Club of Home Economics. For more information call Mrs. Andrew Campbell, 761-8821, or Mrs. Erwin Frederick, 665-9082.

Wolverine Farm Bureau, Oct. 26, 8:30 p.m. at the home of William Frame, 13880 McKinley Rd.

Busy Two-In-One 4-H Flower Garden club Saturday, Oct. 23, 2 p.m., home of the leader, Mrs. Reuben Lindemann. Bring flowers and containers for fall arrangements.

Mill Creek Area meeting to assess feelings and make plans for further action, sponsored by Mill Creek Research Council, Wednesday, Oct. 27, 8 p.m., Lima Community hall. MCRC President Dave Bacon will report on HGMA Oct. 14 meeting.

Young Homemakers, Tuesday, Oct. 26 at Farm Council Grounds, Saline. Ann Arbor Rd. Meeting to follow at home of Mrs. Joe Bauer.

Lyndon Study Extension Group, Thursday, Oct. 21, 12:30 p.m., Lyndon Town Hall. Installation of officers. Lesson is on low-calorie diets.

Sewing every Tuesday afternoon at Korner House.

## Child Study Club Will Sponsor Cooking School

Chelsea Child Study Club will present "Foreign Flavors," a six-week cooking school to be held at Chelsea High school during the months of January and February. Five local experts, Mrs. Norman Wenk, Mrs. Loren Koenig, Mrs. Thomas Bust, Mrs. J. R. Seitz and Dr. Clare Warren and Mrs. Melton Rockman of Ann Arbor, will demonstrate and prepare German pretzels, French, Chinese, Scandinavian, Greek and German cooking.

Finance Chairman Charles Thomas has announced that proceeds from the cooking school will be used to purchase a gift for one of the Chelsea Public Schools. Tickets for the six lessons will cost \$10, and may be purchased by contacting any Child Study Club member, or by calling Mrs. Wilfred Lane, 475-8820, or Mrs. Bruce Galbraith, 475-8024.

## Cassidy Lake . . .

(Continued from page one) prisoners, and that 150 or more men participated in the disturbance, were erroneous, Utess said.

## DEATHS

### John C. Schneider

Life-Long Area Resident Dies Monday at Home

John C. Schneider, 69, a life-long area resident, died at his home, 6720 Conway Rd., Sylvan township, Monday, Oct. 18, following a long period of poor health. Born July 15, 1902 in Chelsea, he was a son of Christian and Mary Visel Schneider. He was married to Esther Page on Nov. 4, 1922. She survives. Also surviving are two sons, Donald and Robert Schneider and a daughter Mrs. Walter (Marlene) Keezer, all of Chelsea, as well as eight grandchildren and one great-grandchild. Other survivors include several nieces and nephews. A son, Christian C. Schneider, preceded his father in death in 1924.

Mr. Schneider had retired from Central Fibre Products Co. in 1962.

Funeral services will be held today, Thursday, at 2 p.m. at the Burghardt Funeral Home with the Rev. LeRoy Johnson officiating. Burial will follow in Oak Grove Cemetery. Those desiring to do so may make memorial contributions to Immanuel Bible Church Memorial Fund.

### William R. Long

Son of Former Chelsea Residents Dies in Detroit

William R. Long, 51, of Detroit, died Tuesday, Oct. 21 following a long illness.

Mr. Long was the son of Harry W. and Barbara Long, former residents of Chelsea. Surviving are his father, Harry W. Long, and his brother, Robert J. Long.

Funeral services were held Friday, Oct. 15 at Nativity church in Detroit. Burial followed in Mt. Olivet Cemetery in Detroit.

## Search for Area Historical Photos Very Successful

The quest for old photographs of Chelsea, launched in September by Ann Arbor Federal Savings for the preparation of a special display to be featured during the grand opening of its Chelsea branch, ended this week.

According to Mrs. Hazel Proctor, director of public relations for the association, more than 150 photographs were loaned by area residents for reproduction and possible inclusion in the display which will be donated to the village following the grand opening ceremonies.

All but a few of the photographs were of reproducible quality, so the problem has now become one of editing the display, Mrs. Proctor said.

"We're very pleased with the response," Mrs. Proctor added. "We now have a very fine collection of old photographs which will make a beautiful display."

Photographs from the Chelsea area not already returned to their owners are now at the McKune Memorial Library where they may be picked up, Mrs. Proctor said.

Officials of the savings and loan association are still aiming for a 1971 opening date, but are hesitant to be more specific since it has become obvious that the proposed Nov. 1 opening is an impossibility.

Telephone Your Club News To GR 5-3581.



Rev. Fr. Francis B. Wahowiak

## St. Mary's Pastor Observing 25th Year of His Ordination

The Rev. Fr. Francis B. Wahowiak, pastor of St. Mary's parish, will observe the 25th year of his ordination to the priesthood with a mass of thanksgiving Sunday, Oct. 24, 11:30 a.m. at St. Mary's church.

Father Wahowiak, the son of the late Peter and Frances Wahowiak of Wyandotte, was born June 14, 1920 in Wyandotte. He completed his elementary and high school studies at Our Lady of Mt. Carmel school in Wyandotte, and received his BA degree at St. Mary's College, Orchard Lake. He completed his studies at St. Mary's Seminary in Norwood, O.

Father Wahowiak was ordained to the priesthood by Edward

## UNICEF Funds

(Continued from page one)

glasses of liquid milk for 25 children.

Michigan donors to UNICEF gave \$177,870 last year.

Those wishing to help with the Chelsea canvass may still pick up canisters at McKune Memorial Library. Following the canvass, the canisters will be returned to the United Methodist church basement social center.

## Bulldogs Still Undefeated

(Continued from page one)

point conversion, but it was Chelsea's game with a final 36 to 28 score.

According to head coach Phil Bareis, fine individual defensive performances were turned in by Tom McKernan who had 10 tackles and 10 assists, Mary Cashdollar with 11 tackles, and Jeff Schmidt and Ralph Stewart with eight tackles each.

Friday night is Homecoming, and Chelsea will meet Dundee under the Chelsea lights at 7:30 p.m.

## PERSONALS

Mrs. Tom Rosel and two children, from Spring Arbor, and Mrs. Rosel's mother, Mrs. Homer Miller, of Parma, were luncheon guests of Mrs. Viola Knoll Oct. 18.

# SAVE NOW

## at CHELSEA LUMBER:

# BATHTUB WALL KITS

WHITE LACE, Reg. \$28<sup>95</sup>  
CREAM MARBLE, Reg. \$32<sup>95</sup>



A COMPLETE PACKAGE OF CUT-TO-FIT  
MELAMINE FINISHED  
PANELS AND MOULDINGS  
DESIGNED WITH THE BEAUTY OF  
YOUR BATH AND THE VALUE  
OF YOUR HOME IN MIND  
INSTALL IT YOURSELF

STOCKED IN WHITE OR CREAM MARBLE

# CHELSEA LUMBER CO.

DIAL 475-3391

## SPECIAL

thru Wednesday, Oct. 27, 1971

# BRAZIER FISH & FRIES 69<sup>c</sup>

Some of the fine Brazier foods.



901 S. MAIN ST., CHELSEA PHONE 475-2677

## GAMBLES

110 N. MAIAN

475-7472



Stores 526 Lbs. of Frozen Foods

In Carton

## CARLOAD FREEZER SALE!

## WHY PAY MORE!

## SAVE ON CORONADO 15 Cu. Ft. Chest Model

Caught in the squeeze of high food prices? Time to choose your Coronado freezer and save two ways—once on our low price—and again on volume food buys! Coils on all 4 sides of this freezer give fast contact freezing. Balanced safety lid stays open when you want it to—locks in cold when you close it.

# \$149<sup>95</sup>

Plus Delivery Charge  
IN CARTON  
Use Your Credit

## CORONADO - FAMOUS FOR QUALITY FOR OVER 40 YEARS!



# THE SUPERMARKET THAT'S JUST A LITTLE BIT BETTER

## Stop & Shop

14901 Old U.S.-12  
Corner at M-52  
Chelsea



### THE KNOW HOW OF INTELLIGENT MEAT BUYING IS REALLY 'KNOW WHERE'

Our customers have learned to depend on the outstanding quality of Stop & Shop meats — unfailing satisfaction with every cut they purchase. The finest quality, together with the experienced expertise of our meat cutting experts, makes an unbeatable combination!

Prices Effective Thursday, October 21, 1971,  
through Sunday, October 24, 1971.

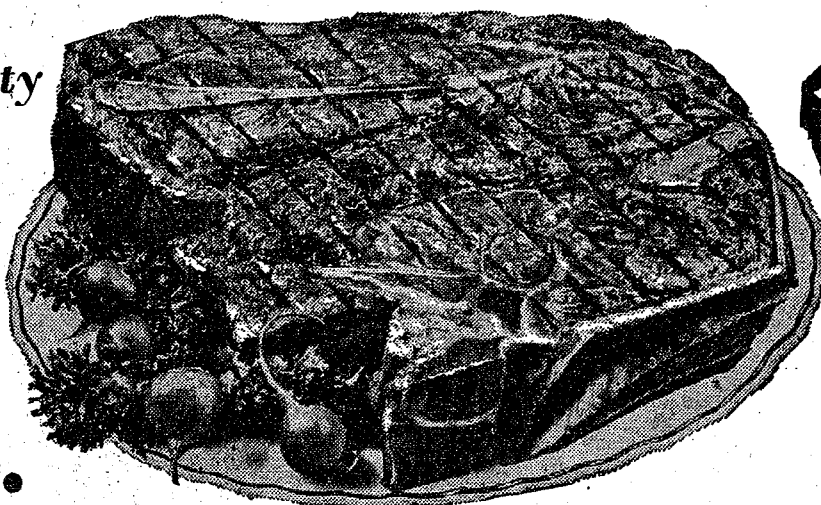
Cut from Grain-Fed Beef, U. S. Gov't. Insp. Top Quality

U.S.D.A. CHOICE BEEF "TRIMMED - RITE"

# CHUCK ROASTS

Pot Cut!  
Tender!  
Juicy!  
Delicious!

# 59<sup>c</sup> lb.



Fresh Quartered  
**Pork Loin** . . . . . Sliced  
Into Chops! **69<sup>c</sup> lb.**

U.S.D.A. Grade 'A' Norbest — Plump,  
**Small Turkeys** . . . . . Under  
10 Lbs. **49<sup>c</sup> lb.**

Peschke's Skinless  
**Wieners** . . . . . 14-Oz.  
Pkg. **68<sup>c</sup>**

Herrud's — Asst. Varieties  
**Wafer-Sliced  
Meats** . . . . . 3-Oz.  
Pkg. **3 for \$1**

Top Quality! Lean! Meaty! "Trimmed-Rite"

## FRESH SPARE RIBS

Medium  
Size **59<sup>c</sup> lb.**

COURTLAND VALLEY

## SAUER KRAUT

"Great with Spare Ribs"

2-Lb.  
Bag **39<sup>c</sup>**

U.S.D.A. Choice Beef  
**Chuck Roasts** . . . . . Center  
Cut **69<sup>c</sup> lb.**

U.S.D.A. Choice Beef  
**Chuck Roasts** . . . . . Boneless **89<sup>c</sup> lb.**

U.S.D.A. Choice Beef  
**Swiss Steak** . . . . . Arm  
Cut **89<sup>c</sup> lb.**

U.S.D.A. Choice, Pre-Diced  
**Boneless Beef Stew** . . **99<sup>c</sup> lb.**

Meadowdale Thin-Sliced  
**Sliced Bacon** . . . . . 1-Lb.  
Pkg. **59<sup>c</sup>**

MCDONALD

## COTTAGE CHEESE

1-Lb.  
Crtn. **23<sup>c</sup>**

CAMPBELL'S CONDENSED

## TOMATO SOUP

10 3/4-Oz.  
Can **11<sup>c</sup>**

KIDS LOVE IT!

## JIF Peanut Butter

1-Lb., 12-Oz.  
Jar **88<sup>c</sup>**

SPECIAL LABEL

## HUNT CLUBBurger BITS

25-Lb.  
Bag **\$2.49**

### Courteous, Friendly Service

For Your Shopping Convenience . . .

### STORE HOURS:

Monday thru Saturday

9 a.m. to 9 p.m.

Sunday, 10 a.m. to 5 p.m.

### Plenty of FREE PARKING

SHAMROCK

# EGGS

Large  
Size  
1 Doz. **39<sup>c</sup>**

RIPPIN' GOOD COFFEE SHOP

Peanut Butter, Butterscotch, Raisin,  
Chocolate Chip, Oatmeal, Lemon Chip

## COOKIES

2-Lb. or  
10-Doz.  
Box **77<sup>c</sup>** Your  
Choice

## ICE COLD

## BEER & WINE

### Farm Fresh Produce

California  
**PASCAL CELERY** . . . . . Stalk **33<sup>c</sup>**

California Red Emperor  
**GRAPES** . . . . . 1-Lb. **38<sup>c</sup>**

Fresh  
**TOMATOES** . . . . . 5 Per  
Trey **29<sup>c</sup>**

CANADA DRY FRUIT FLAVOR

## POP . . . . . 28-Oz. Bottle **19<sup>c</sup>**

MARDI GRAS

## PAPER TOWELS

Jumbo  
Roll **29<sup>c</sup>**

"FIRST QUALITY!" "LONG LASTING!"

## AMPLON SHEERLIFE PANTY HOSE

Assorted  
Colors

# 59<sup>c</sup>

FRESH FROZEN

## TREESWEET ORANGE JUICE

6-Oz.  
Can

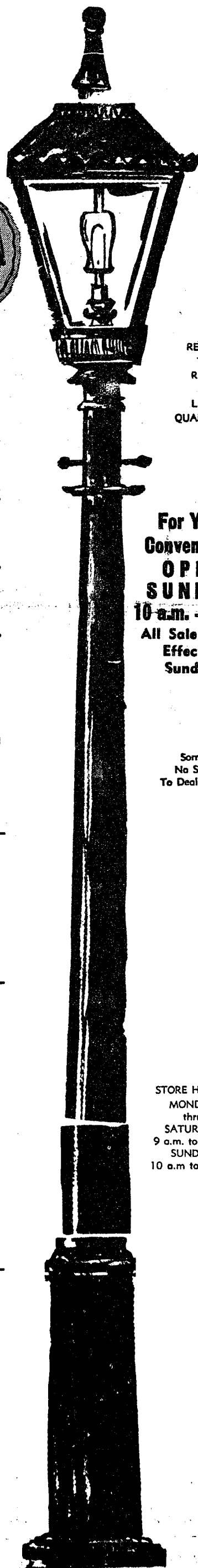
# 5 For \$1

WE  
RESERVE  
THE  
RIGHT  
TO  
LIMIT  
QUANTITIES

For Your  
Convenience  
**OPEN  
SUNDAY**  
10 a.m. - 5 p.m.  
All Sale Prices  
Effective  
Sundays

Sorry,  
No Sales  
To Dealer

STORE HOURS:  
MONDAY  
thru  
SATURDAY  
9 a.m. to 9 p.m.  
SUNDAY  
10 a.m. to 5 p.m.





## Legal Notices

**MORTGAGE SALE**  
 All having been made in the terms of a mortgage made by LOWELL E. HUDSON and HILSON, his wife, City of Ann Arbor, Michigan, to BIRMINGHAM BLOOM-BANK, a Michigan Banking Corporation, of Birmingham, Michigan, Mort dated the 29th day of December, 1968, and recorded in the Office of the State of Michigan, for the County of Washtenaw County Records, Book 101, on which mortgage there is to be due, and the rate of this for principal and interest, the Eighteen Thousand Eight Hundred and Ninety Nine and 33/100 (\$18,899.33) Dollars, on Thursday, October 28, 1971.

no suit or proceedings at law or equity having been instituted to redress the debt secured by said mortgage, and there being no default by the power of sale contained in the mortgage, and pursuant to the statute of the State of Michigan in such cases, and provided, notice is hereby given that the 12th day of November, 1971, at 10 o'clock A.M., Eastern Standard Time, said mortgage will be sold by a sale at public auction, to the highest bidder, at the Court House Building, Ann Arbor, Michigan, being the building where the Circuit Court for the County of Washtenaw County is held, of the premises described in and to, or so much thereof as may be necessary to satisfy the amount due, on said mortgage, with the thereon at Seven per cent (7%) per annum and charges, including the attorney fees, by law, and also any sum or sums which may be due and necessary to protect its interest in such cases. Which said premises are described as follows:

Lot 1, of the premises described in and to, or so much thereof as may be necessary to satisfy the amount due, on said mortgage, with the thereon at Seven per cent (7%) per annum and charges, including the attorney fees, by law, and also any sum or sums which may be due and necessary to protect its interest in such cases. Which said premises are described as follows:

Lot 1, of the premises described in and to, or so much thereof as may be necessary to satisfy the amount due, on said mortgage, with the thereon at Seven per cent (7%) per annum and charges, including the attorney fees, by law, and also any sum or sums which may be due and necessary to protect its interest in such cases. Which said premises are described as follows:

Lot 1, of the premises described in and to, or so much thereof as may be necessary to satisfy the amount due, on said mortgage, with the thereon at Seven per cent (7%) per annum and charges, including the attorney fees, by law, and also any sum or sums which may be due and necessary to protect its interest in such cases. Which said premises are described as follows:

Lot 1, of the premises described in and to, or so much thereof as may be necessary to satisfy the amount due, on said mortgage, with the thereon at Seven per cent (7%) per annum and charges, including the attorney fees, by law, and also any sum or sums which may be due and necessary to protect its interest in such cases. Which said premises are described as follows:

Lot 1, of the premises described in and to, or so much thereof as may be necessary to satisfy the amount due, on said mortgage, with the thereon at Seven per cent (7%) per annum and charges, including the attorney fees, by law, and also any sum or sums which may be due and necessary to protect its interest in such cases. Which said premises are described as follows:

Lot 1, of the premises described in and to, or so much thereof as may be necessary to satisfy the amount due, on said mortgage, with the thereon at Seven per cent (7%) per annum and charges, including the attorney fees, by law, and also any sum or sums which may be due and necessary to protect its interest in such cases. Which said premises are described as follows:

Lot 1, of the premises described in and to, or so much thereof as may be necessary to satisfy the amount due, on said mortgage, with the thereon at Seven per cent (7%) per annum and charges, including the attorney fees, by law, and also any sum or sums which may be due and necessary to protect its interest in such cases. Which said premises are described as follows:

Lot 1, of the premises described in and to, or so much thereof as may be necessary to satisfy the amount due, on said mortgage, with the thereon at Seven per cent (7%) per annum and charges, including the attorney fees, by law, and also any sum or sums which may be due and necessary to protect its interest in such cases. Which said premises are described as follows:

**Corn Irrigation Would Have Paid Off in '71**  
 Michigan corn farmers are thinking about irrigation after the dry 1971 season. Irrigation this year would have boosted yields enough in drought areas to pay for three years of operating an irrigation system, reports Raymond J. Kunze, Michigan State University soil scientist. He said that in only two out of the last seven years (1968 and 1970) irrigation was no benefit. "The initial irrigation investment runs \$100 to \$200 per acre," added Kunze. "After the initial cost, an inch of irrigation water costs approximately \$5 per acre."

**ORDER OF PUBLICATION**  
 State of Michigan, Probate Court for the County of Washtenaw. File No. 58348. Estate of GEORGE D. WINCHESTER, Deceased. It is Ordered that on November 11, 1971, at 11:00 a.m., in the Probate Courtroom, Ann Arbor, Michigan, a hearing be held on the Petition of Tony Fuchs, for appointment of an administrator, and for a determination of heirs. Publication and service shall be made as provided by Statute and Court Rule. Dated: October 8, 1971. Rodney E. Hutchison, Judge of Probate.

**ORDER OF PUBLICATION**  
 State of Michigan, Probate Court for the County of Washtenaw. File No. 58349. Estate of IDA M. WEST, Deceased. It is Ordered that on November 2, 1971, at 10:00 a.m., in the Probate Courtroom, Ann Arbor, Michigan, a hearing be held on the Petition of Verna Hildebrand, administrator, for allowance of her final account and for assignment of residue. Publication and service shall be made as provided by Statute and Court Rule. Dated: September 28, 1971. Rodney E. Hutchison, Judge of Probate.

**ORDER OF PUBLICATION**  
 State of Michigan, Probate Court for the County of Washtenaw. File No. 58350. Estate of OLIVER FRANCIS RUSSELL, to change name to CARL FRANCIS BROOKS. It is Ordered that on November 4, 1971, at 10:00 a.m., in the Probate Courtroom, Ann Arbor, Michigan, a hearing be held on the Petition of Oliver Francis Russell, to change name to Carl Francis Brooks. Publication and service shall be made as provided by Statute and Court Rule. Dated: September 29, 1971. Rodney E. Hutchison, Judge of Probate.

**ORDER OF PUBLICATION**  
 State of Michigan, Probate Court for the County of Washtenaw. File No. 58351. Estate of RON PAUL, formerly known as RONALD PAUL, Deceased. It is Ordered that on December 7, 1971, at 10:00 a.m., in the Probate Courtroom, Ann Arbor, Michigan, a hearing be held on the Petition of Ron Paul, for appointment of an administrator, and for a determination of heirs. Publication and service shall be made as provided by Statute and Court Rule. Dated: October 4, 1971. Rodney E. Hutchison, Judge of Probate.

**ORDER OF PUBLICATION**  
 State of Michigan, Probate Court for the County of Washtenaw. File No. 58352. Estate of EDNA LOWERY, Deceased. It is Ordered that on December 14, 1971, at 11:00 a.m., in the Probate Courtroom, Ann Arbor, Michigan, a hearing be held at which all creditors of said deceased are to be notified, and the claims of creditors must be sworn to and filed with the court and serve a copy on the executor or administrator, or the date of the second publication of this notice to the defendant at his last known address. Publication and service shall be made as provided by Statute and Court Rule. Dated: October 8, 1971. Rodney E. Hutchison, Judge of Probate.

**ORDER OF PUBLICATION**  
 State of Michigan, Probate Court for the County of Washtenaw. File No. 58353. Estate of ROBERT J. BESSER, Minor. It is Ordered that on November 11, 1971, at 11:00 a.m., in the Probate Courtroom, Ann Arbor, Michigan, a hearing be held on the Petition of John W. Messer, Jr., for appointment of a guardian for the custody and care of the education of said minor. Publication and service shall be made as provided by Statute and Court Rule. Dated: October 8, 1971. Rodney E. Hutchison, Judge of Probate.

**ORDER OF PUBLICATION**  
 State of Michigan, Probate Court for the County of Washtenaw. File No. 58354. Estate of RUTH B. FLETCHER, Deceased. It is Ordered that on December 7, 1971, at 10:00 a.m., in the Probate Courtroom, Ann Arbor, Michigan, a hearing be held at which all creditors of said deceased are to be notified, and the claims of creditors must be sworn to and filed with the court and serve a copy on the executor or administrator, or the date of the second publication of this notice to the defendant at his last known address. Publication and service shall be made as provided by Statute and Court Rule. Dated: October 8, 1971. Rodney E. Hutchison, Judge of Probate.

**ORDER OF PUBLICATION**  
 State of Michigan, Probate Court for the County of Washtenaw. File No. 58355. Estate of ROBERT J. BESSER, Minor. It is Ordered that on November 11, 1971, at 11:00 a.m., in the Probate Courtroom, Ann Arbor, Michigan, a hearing be held on the Petition of John W. Messer, Jr., for appointment of a guardian for the custody and care of the education of said minor. Publication and service shall be made as provided by Statute and Court Rule. Dated: October 8, 1971. Rodney E. Hutchison, Judge of Probate.

**ORDER OF PUBLICATION**  
 State of Michigan, Probate Court for the County of Washtenaw. File No. 58356. Estate of RUTH B. FLETCHER, Deceased. It is Ordered that on December 7, 1971, at 10:00 a.m., in the Probate Courtroom, Ann Arbor, Michigan, a hearing be held at which all creditors of said deceased are to be notified, and the claims of creditors must be sworn to and filed with the court and serve a copy on the executor or administrator, or the date of the second publication of this notice to the defendant at his last known address. Publication and service shall be made as provided by Statute and Court Rule. Dated: October 8, 1971. Rodney E. Hutchison, Judge of Probate.

**ORDER OF PUBLICATION**  
 State of Michigan, Probate Court for the County of Washtenaw. File No. 58357. Estate of ROBERT J. BESSER, Minor. It is Ordered that on November 11, 1971, at 11:00 a.m., in the Probate Courtroom, Ann Arbor, Michigan, a hearing be held on the Petition of John W. Messer, Jr., for appointment of a guardian for the custody and care of the education of said minor. Publication and service shall be made as provided by Statute and Court Rule. Dated: October 8, 1971. Rodney E. Hutchison, Judge of Probate.

**NORTH ELEMENTARY SCHOOL NOTES**  
**THIRD GRADE—**  
 Mrs. Raduazo, teacher. We have had a very busy first six weeks of school and are already doing many interesting and different things. We are learning about the United States in Social studies and have been making and using maps a lot. We are even making our own relief map of the United States using sawdust and papier mache. We have been writing book reports, and watching our "book worm" grow. We enjoyed writing stories about fall. In science we are learning about molecules and we have been reporting the weather every morning and calculating the wind speed on our Beaufort Scale. We have a new boy in our room. His name is Mike O'Quinn.

**REPORTERS:**  
 Karen Moore, Gina Gaudet, Shari Weber, Chris Pax, John Haydock, Margaret Stirling. Hello, from Mrs. Peet's third grade. We've been pretty busy for the last few weeks. Here are some of the things we've done. We've been working with maps of North America. We colored and marked on paper maps. We had a report on hurricanes by John Haydock, Bruce Young, Margaret Stirling and Christine Pax. They told us about what hurricanes are and how they affect us. We have taken tests in math, English and spelling. We have had lots of fun making our terrarium. First we put gravel in the bottom of a big aquarium, then we put pieces of charcoal, then we put in a big layer of soil. Next we put in lots and lots of plants and salamanders, a caterpillar, some worms, insects and flies. We are experimenting with the terrarium. We are going to see how animals and plants react to each other. We each have made two books, one about what things are for and one about ourselves. It was fun. We now have a section in the library in our room that has books in it that we've written ourselves. We have put some things up on the bulletin board in the lobby. We wrote stories about how different things look in the fall and made pictures to go with them. We put them up with colored leaves and a black background. We will tell you more about things we're doing next month!

**FOURTH GRADE—**  
 Mrs. Hafer, teacher. Reporters: Gayle Beyer, Sue Schafer and Dennis White. We have been studying about Alaska and some kids brought some things in about Alaska. For instance, Kurt Walworth brought in 100 very tiny hand-carved elephants made out of ivory. Valisa Fletcher brought in an Eskimo doll and a small elephant made out of ivory. Jamie Foster brought in a little man made out of ivory and Chris Check brought in an ivory necklace and some other kids brought in magazines about Alaska. Scott Robertson brought in a catpillar that made a cocoon and we think it is a moth. Our class made some people about eight inches long. We made three giant trees for the bulletin board. We also made a school house and some football players and cheerleaders. We did some science experiments and some of them were pretty good. Some kids in our room planted hickory nut trees and oak trees, and Dennis White's is the tallest so far. We have some birthdays in our room. Our September birthdays are Henri Vanderwaard and Steve Myers. Our October people are David Seyffried, Chris Check and Valisa Fletcher. We are in our 6's in multiplication in arithmetic. Our class wrote rebuses and there were stories and poems. We put them up on the board. We have a gerbil and guinea pig in our room. Our perbil eats paper and scraps of vegetables. Our guinea pig eats vegetables. On our playground we have some new equipment made out of wood, rope and tires. Our class made maps of North school. Some were pretty good. The ones that were good were put on the board. Our class has two members on the Beautification Committee.

**FIFTH GRADE—**  
 Mrs. Mortensen, teacher. Reporter: Janet Wals. We have two guinea pigs in our room, Snoopy and Violet. Snoopy is dark brown, and Violet is light brown. Violet is pregnant. In science we have been studying how rocks are broken down and built up. Also, we studied the three kinds of rocks. In social studies we have been studying Indians. We each wrote a report on a tribe. In arithmetic we are reviewing multiplication tables through the nines. Mrs. Crouch's room and Mrs. Mortensen's room share reading classes: Open Highways in Mrs. Crouch's and Vistas in our room. North school has an art teacher and gym teacher this year.

**HOME ECONOMICS**  
 Doug Wetzel, Penny Wood, Michele Wortley, Todd Wurster. The fifth grade are hauling dirt around the buildings. We are planting flowers around the buildings. The flowers are iris roots, bulbs, daffodils, narcissus, tulips. In spring we hope they all come up. In social studies we are studying Christopher Columbus. We have an art teacher and gym teacher for the first time. In art we are going to make papier mache things.

**SCHOOL HUMOR!**  
 By Todd Wurster. There was a kid who saw a pile of leaves. He ran and jumped in the pile of leaves. YOW!!! His friend came over to him and said, "What's the matter?" I just discovered something. What? Never jump into a burning pile of leaves!

**Home Economics Study Groups Calendar**  
 Ann Arbor Suburbanettes Study Group, Oct. 21. Mrs. Bernard Ehms, 5645 Earhart Rd., Ann Arbor. Worden Study Group, Oct. 26. Mrs. Doris Ball, 7811 - 6 Mile Rd., Northville. West Bridgewater Study Group, Oct. 26. Bridgewater Town Hall. A cubic mile of sea water contains an average of 49,500,000 tons of sodium.

**Home Economics Study Groups Calendar**  
 Ann Arbor Suburbanettes Study Group, Oct. 21. Mrs. Bernard Ehms, 5645 Earhart Rd., Ann Arbor. Worden Study Group, Oct. 26. Mrs. Doris Ball, 7811 - 6 Mile Rd., Northville. West Bridgewater Study Group, Oct. 26. Bridgewater Town Hall. A cubic mile of sea water contains an average of 49,500,000 tons of sodium.

**Home Economics Study Groups Calendar**  
 Ann Arbor Suburbanettes Study Group, Oct. 21. Mrs. Bernard Ehms, 5645 Earhart Rd., Ann Arbor. Worden Study Group, Oct. 26. Mrs. Doris Ball, 7811 - 6 Mile Rd., Northville. West Bridgewater Study Group, Oct. 26. Bridgewater Town Hall. A cubic mile of sea water contains an average of 49,500,000 tons of sodium.

**Home Economics Study Groups Calendar**  
 Ann Arbor Suburbanettes Study Group, Oct. 21. Mrs. Bernard Ehms, 5645 Earhart Rd., Ann Arbor. Worden Study Group, Oct. 26. Mrs. Doris Ball, 7811 - 6 Mile Rd., Northville. West Bridgewater Study Group, Oct. 26. Bridgewater Town Hall. A cubic mile of sea water contains an average of 49,500,000 tons of sodium.

**CROSSWORD PUZZLE**  
 Today's Answer  
 ACROSS  
 1. Father  
 5. Foundations  
 10. Smells  
 12. —nous; confidentially  
 13. Exclusive (2 wds.)  
 15. High (mus.)  
 16. Chemical suffix  
 17. Wine cup  
 18. Barbecue bar  
 19. In good shape  
 20. Man-servant  
 22. Quote  
 23. "Art Of Love" poet  
 24. Accomplished  
 25. Extorted money from  
 26. Floating ice masses  
 27. Swiss river  
 28. Carry  
 29. R.R. stop  
 30. Brewery creation  
 31. Written letter  
 34. The upper crust (2 wds.)  
 37. Alaskan native  
 38. Hiccoughed  
 39. Golf club

**CROSSWORD PUZZLE**  
 Today's Answer  
 DOWN  
 4. Woe is me!  
 6. &s  
 7. Raking with machine-gun fire  
 8. Hermits  
 9. Unruffled  
 11. Molded  
 14. Single-ton  
 18. Hurred home, in baseball  
 20. Explosive  
 21. Reached a mean  
 22. Nucleus  
 24. Notice  
 25. Turkish title  
 26. Philistine  
 31. Bridal symbol  
 32. Little Henrietta  
 33. Orbs  
 35. Embrace  
 36. David's chief officer

**CROSSWORD PUZZLE**  
 Today's Answer  
 ACROSS  
 1. Father  
 5. Foundations  
 10. Smells  
 12. —nous; confidentially  
 13. Exclusive (2 wds.)  
 15. High (mus.)  
 16. Chemical suffix  
 17. Wine cup  
 18. Barbecue bar  
 19. In good shape  
 20. Man-servant  
 22. Quote  
 23. "Art Of Love" poet  
 24. Accomplished  
 25. Extorted money from  
 26. Floating ice masses  
 27. Swiss river  
 28. Carry  
 29. R.R. stop  
 30. Brewery creation  
 31. Written letter  
 34. The upper crust (2 wds.)  
 37. Alaskan native  
 38. Hiccoughed  
 39. Golf club

**CROSSWORD PUZZLE**  
 Today's Answer  
 DOWN  
 4. Woe is me!  
 6. &s  
 7. Raking with machine-gun fire  
 8. Hermits  
 9. Unruffled  
 11. Molded  
 14. Single-ton  
 18. Hurred home, in baseball  
 20. Explosive  
 21. Reached a mean  
 22. Nucleus  
 24. Notice  
 25. Turkish title  
 26. Philistine  
 31. Bridal symbol  
 32. Little Henrietta  
 33. Orbs  
 35. Embrace  
 36. David's chief officer

**CROSSWORD PUZZLE**  
 Today's Answer  
 ACROSS  
 1. Father  
 5. Foundations  
 10. Smells  
 12. —nous; confidentially  
 13. Exclusive (2 wds.)  
 15. High (mus.)  
 16. Chemical suffix  
 17. Wine cup  
 18. Barbecue bar  
 19. In good shape  
 20. Man-servant  
 22. Quote  
 23. "Art Of Love" poet  
 24. Accomplished  
 25. Extorted money from  
 26. Floating ice masses  
 27. Swiss river  
 28. Carry  
 29. R.R. stop  
 30. Brewery creation  
 31. Written letter  
 34. The upper crust (2 wds.)  
 37. Alaskan native  
 38. Hiccoughed  
 39. Golf club

**CROSSWORD PUZZLE**  
 Today's Answer  
 DOWN  
 4. Woe is me!  
 6. &s  
 7. Raking with machine-gun fire  
 8. Hermits  
 9. Unruffled  
 11. Molded  
 14. Single-ton  
 18. Hurred home, in baseball  
 20. Explosive  
 21. Reached a mean  
 22. Nucleus  
 24. Notice  
 25. Turkish title  
 26. Philistine  
 31. Bridal symbol  
 32. Little Henrietta  
 33. Orbs  
 35. Embrace  
 36. David's chief officer

**CROSSWORD PUZZLE**  
 Today's Answer  
 ACROSS  
 1. Father  
 5. Foundations  
 10. Smells  
 12. —nous; confidentially  
 13. Exclusive (2 wds.)  
 15. High (mus.)  
 16. Chemical suffix  
 17. Wine cup  
 18. Barbecue bar  
 19. In good shape  
 20. Man-servant  
 22. Quote  
 23. "Art Of Love" poet  
 24. Accomplished  
 25. Extorted money from  
 26. Floating ice masses  
 27. Swiss river  
 28. Carry  
 29. R.R. stop  
 30. Brewery creation  
 31. Written letter  
 34. The upper crust (2 wds.)  
 37. Alaskan native  
 38. Hiccoughed  
 39. Golf club

**CROSSWORD PUZZLE**  
 Today's Answer  
 DOWN  
 4. Woe is me!  
 6. &s  
 7. Raking with machine-gun fire  
 8. Hermits  
 9. Unruffled  
 11. Molded  
 14. Single-ton  
 18. Hurred home, in baseball  
 20. Explosive  
 21. Reached a mean  
 22. Nucleus  
 24. Notice  
 25. Turkish title  
 26. Philistine  
 31. Bridal symbol  
 32. Little Henrietta  
 33. Orbs  
 35. Embrace  
 36. David's chief officer

**CROSSWORD PUZZLE**  
 Today's Answer  
 ACROSS  
 1. Father  
 5. Foundations  
 10. Smells  
 12. —nous; confidentially  
 13. Exclusive (2 wds.)  
 15. High (mus.)  
 16. Chemical suffix  
 17. Wine cup  
 18. Barbecue bar  
 19. In good shape  
 20. Man-servant  
 22. Quote  
 23. "Art Of Love" poet  
 24. Accomplished  
 25. Extorted money from  
 26. Floating ice masses  
 27. Swiss river  
 28. Carry  
 29. R.R. stop  
 30. Brewery creation  
 31. Written letter  
 34. The upper crust (2 wds.)  
 37. Alaskan native  
 38. Hiccoughed  
 39. Golf club

**CROSSWORD PUZZLE**  
 Today's Answer  
 DOWN  
 4. Woe is me!  
 6. &s  
 7. Raking with machine-gun fire  
 8. Hermits  
 9. Unruffled  
 11. Molded  
 14. Single-ton  
 18. Hurred home, in baseball  
 20. Explosive  
 21. Reached a mean  
 22. Nucleus  
 24. Notice  
 25. Turkish title  
 26. Philistine  
 31. Bridal symbol  
 32. Little Henrietta  
 33. Orbs  
 35. Embrace  
 36. David's chief officer

**School Budget Hearing**  
 In accordance with the provisions of Public Act No. 43, Second Extra Session, 1963 Legislature, notice is hereby given that a public hearing will be held on the 1971-72 budget for the Chelsea School District on Monday, Nov. 1, 1971 in the Chelsea High School Library at 7:00 p.m. A copy of this 1971-72 budget is available for public inspection at the office of the superintendent of schools at the Chelsea High School.

**Chelsea School District**  
 Carolyn Smith, Secretary, Board of Education

**WANTED**  
**CEMENT & BLOCKWORK**  
 All types—Poured walls, floors, drives and foundations.  
**CECIL CAUDILL**  
 (517) 851-3847

**WANTED - SUPREME COURT COMMISSIONER**  
 QUALIFICATIONS: Attorney; Membership in Michigan State Bar; Minimum 6 years experience in state and federal courts.  
 DUTIES: Professional legal work in study, review, analysis and recommendation in highly specialized fields of law, as referred by the Supreme Court.  
 SALARY: \$24,000 Minimum.  
 CONTACT: Court Administrator, Seven Story Office Building, Box 88, Lansing, Michigan 48901.  
 FINAL FILING DATE: November 15, 1971.  
 STARTING DATE: Immediately.

**WANTED - DEPUTY CLERK - SUPREME COURT**  
 QUALIFICATIONS: Attorney, Membership in Michigan State Bar; Minimum 2 years experience in state courts or other courts.  
 DUTIES: Perform general legal administrative tasks centering in three areas: technical and practical application of Court Rules to all possible situations, systems of record keeping and the immediate extraction of complete status information; extraction and presentation of statistical information.  
 SALARY: \$20,000 Annually - Minimum.  
 CONTACT: Court Administrator, Seven Story Office Building, Box 88, Lansing, Michigan 48901.  
 FINAL FILING DATE: November 15, 1971.  
 STARTING DATE: Immediately.

**NOTICE OF MEETING OF SYLVAN TOWNSHIP PLANNING COMMISSION TO ACT ON APPLICATION OF CONSUMERS POWER COMPANY FOR CONDITIONAL USE PERMIT**  
 A special meeting of the Sylvan Township Planning Commission will be held at the Sylvan Townhall, Chelsea, Michigan, on Monday, October 25, 1971 at 7:30 o'clock, p.m. for a public hearing on the application of Consumers Power Company for a Conditional Use Permit to construct electric public utility substations and towers in accordance with submitted plans in Sections 12, 11, 15, 16, 21, 28 and 33 of Sylvan Township, Washtenaw County, Michigan, under the provisions of Section 10.01, B-14 of the Sylvan Township Zoning Ordinance, the aforesaid lands being for the most part previously zoned "A-1 Agricultural."

The map and the plans are on file with the Sylvan Township Planning Commission.  
**Sylvan Township Planning Commission**  
 JAMES P. LIEBECK, SECRETARY



# GRAND OPENING



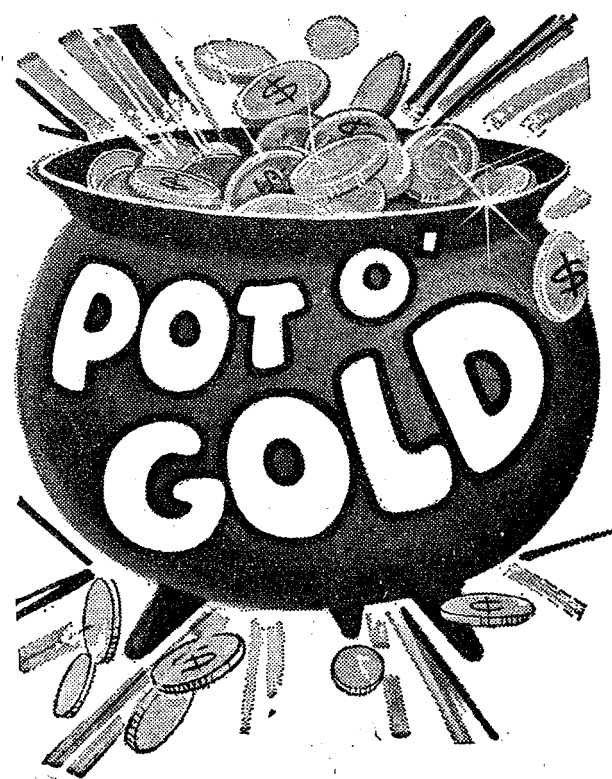
**AHOY!**

**TRUSTWORTHY**  
Store

**SPECIALS**



**RAINBOW'S END  
FOR  
LUCKY SHOPPERS**



**PRIZES:**  
Electric Drill  
Can Openers  
Garbage Disposal  
24" Vanity & Top  
6' Metal Tapes

**Free  
GIFTS**

# HILLTOP

PHONE 475-2949

1414 South Main St.

Chelsea, Mich.



**All Store Items 10% OFF During Week of October 22-29 th.**



## State Attorney General's Office Enters Scio Equalization Suit

Scio township suit protest- the property tax equalization ss in Washtenaw county filed September has led to the fil- of a legal motion by the igan Attorney General's of- contending the Washtenaw y Circuit Court has no juris- in the matter.

he motion filed by the Attom- neral's office claims that it Court has no authority to aside a State Tax Commis- sion's determination denying review e bitterly contested property equalization process in this y.

he process, which has led to battles and appeals, was ap- ed by the County Board of nissioners last April.

Assistant Attorney General rd R. Roesch, representing Tax Commission, included the tion in a motion for accel- eration in the case of township against the Tax mission, the Board of Com- oners, and the County Equal- on Department Directo George ishak.

io township filed suit against three defendants in Septem- seeking a Circuit Court order ing aside the Tax Commission's al of a request to review the ty's equalization process, and for such a review.

he case was assigned to Judge W. Campbell, but there has no hearing on the complaint If the state's motion is grant- he case will be dismissed. The

Washtenaw county Prosecuting At- torney's office has also filed a similar motion for accelerated judgment.

Tax equalization in this county has been the subject of a con- tinuing dispute between county officials and several of the coun- ty's townships ever since Ypsil- anti township originally sued the county eight months ago, charg- ing unfair and burdensome taxa- tion because of the equalization procedure used in the county.

## Girl Scouts ...

### TROOP 82—

We had an overnight campout Oct. 9. We made camp, built fires, and ate in the rain. A lot of us got wet because our tents leaked. Saturday was nice, kind of soggy, but nice. We hiked, learned to follow a trail, and had lots of fun. At our meeting Monday, Oct. 18, we sprayed weeds with blue, gold and silver paint. They made pretty bouquets.

Wendy Myers, scribe.

### TROOP 47—

We opened our meeting Wednes- day, Oct. 13 with our pledge. Then we started making our Girl Scout flag. We finished it by the end of our meeting. We closed with taps and Indian style.

Valisa Fletcher, scribe.

Telephone Your Club News To GR 5-3581.

## + Services in Our Churches +

**OUR SAVIOR LUTHERAN CHURCH**  
Rebekah Hall, 1194 M-52  
The Rev. William H. Keller, Pastor  
Every Sunday—  
9:00 a.m.—Sunday school.  
10:30 a.m.—Worship service.  
Every Tuesday—  
8:30-5 p.m.—Confirmation I.  
Every Thursday—  
4:00-5:30 p.m.—Confirmation II.  
Every Saturday—  
9:00 a.m.-11:00 a.m.—Confirma- tion III.

**FIRST UNITED METHODIST CHURCH**  
The Rev. Clive Dickens, Pastor  
Thursday, Oct. 21—  
7:30 p.m.—Arts and Crafts for church school workers.  
8:00 p.m.—Nominating Commit- tee.  
Sunday, Oct. 24—  
9:00 a.m.—Sunday school (four year to adult).  
10:00 a.m.—Worship service.  
11:15 a.m.—Intermediate Choir.  
No Youth Fellowship meetings today.  
Tuesday, Oct. 26—  
8:00 p.m.—Taskforce on Mem- bership and Evangelism, Litteral Room.  
Wednesday, Oct. 27—  
1:00 p.m.—WSCS Executive Committee at the home of Alice Schmuck.  
8:30 p.m.—Primary Choir (Grades K through 2).  
4:00 p.m.—Junior Choir (Grades 3 through 5).  
7:00 p.m.—Youth Choir (Grades 9 through 12).  
8:00 p.m.—Senior Choir.

**EMMANUEL BIBLE CHURCH**  
145 E. Summit St.  
The Rev. LeRoy Johnson, Pastor.  
Every Sunday—  
9:45 a.m.—Sunday school, nur- sery provided.  
11:00 a.m.—Morning worship, nursery provided.  
7:00 p.m.—Evening service.  
Every Wednesday—  
Family hour, prayer meeting and Bible study.

**ST. JOHN'S EVANGELICAL AND REFORMED CHURCH**  
(United Church of Christ)  
Rogers Corners  
The Rev. David J. Kleis  
Every Sunday—  
9:30 a.m.—Sunday school.  
10:30 a.m.—Morning worship.

**CHURCH OF CHRIST**  
13861 Old US-12, East  
Lionel S. Burger, Minister  
Every Sunday—  
10:00 a.m.—Church school.  
11:00 a.m.—Worship service.  
6:00 p.m.—Worship service.  
Every Wednesday—  
7:30 p.m.—Bible Study.

**FIRST ASSEMBLY OF GOD CHURCH**  
The Rev. Thode B. Thodeson  
Pastor  
Every Sunday—  
9:45 a.m.—Sunday school.  
11:00 a.m.—Worship service.  
7:00 p.m.—Evangelistic service.  
Every Wednesday—  
7:00 p.m.—Midweek services.

**NORTH SHARON COMMUNITY BIBLE CHURCH**  
Sylvan and Washburn Rds.  
The Rev. William Enslen, Pastor  
Every Sunday—  
10:00 a.m.—Sunday school.  
11:00 a.m.—Worship service.  
6:30 p.m.—Young People's service.  
Every Wednesday—  
7:30 p.m.—Prayer meeting.

**BETHEL EVANGELICAL AND REFORMED CHURCH**  
(United Church of Christ)  
Freedom Township  
The Rev. Roman A. Reineck  
Every Sunday—  
10:00 a.m.—Worship.  
10:00 a.m.—Sunday school.

**ST. JACOB EVANGELICAL LUTHERAN CHURCH**  
12501 Riethmiller Rd., Grass Lake  
The Rev. Andrew Bloom, Pastor  
Every Sunday—  
9:00 a.m.—Sunday school.  
10:15 a.m.—Divine services.

**FIRST UNITED PRESBYTERIAN CHURCH**  
Unadilla  
The Rev. T. H. Liang  
Every Sunday—  
9:45 a.m.—Sunday school.  
11:00 a.m.—Worship service.  
Every Tuesday—  
8:00 p.m.—Choir practice.

**ST. PAUL UNITED CHURCH OF CHRIST**  
The Rev. Warner Siebert, Pastor  
Saturday, Oct. 23—  
9:00 a.m.—Junior High confir- mation program.  
Sunday, Oct. 24—  
9:00 a.m.—Stewardship train- ing.  
9:15 a.m.—Church school.  
10:30 a.m.—Worship. Sermon title: "Must We All Agree?"  
Tuesday, Oct. 26—  
8:00 p.m.—Teacher training.  
Wednesday, Oct. 27—  
7:15 p.m.—High School Choir.  
8:00 p.m.—Chelsea Ministerial Association.

**VILLAGE UNITED METHODIST CHURCH OF WATERLOO**  
8118 Washington St.  
Mrs. Altha Barnes, pastor  
Every Sunday—  
10:00 a.m.—Sunday school.  
11:15 a.m.—Morning worship.  
First and Third Saturdays—  
7:00 p.m.—Youth Fellowship at Village Church Sunday school house.

**ST. JOHN'S EVANGELICAL AND REFORMED CHURCH**  
(United Church of Christ)  
Francisco  
The Rev. Robert Townley  
Every Sunday—  
10:00 a.m.—Worship service.  
10:20 a.m.—Sunday school.

**FIRST UNITED METHODIST PARKS AND TERRITORIAL RDS.**  
Mrs. Altha Barnes, Pastor  
Every Sunday—  
9:15 a.m.—Morning worship.  
10:30 a.m.—Sunday school.  
First and Third Saturdays—  
7:00 p.m.—Youth Fellowship at Village church Sunday school house.

**FIRST CHURCH OF CHRIST, SCIENTIST**  
1883 Washtenaw Ave., Ann Arbor  
Sunday, Oct. 24—  
10:30 a.m.—Sunday school.  
10:30 a.m.—Morning service.  
Lesson-sermon: "Probation Af- ter Death."

**NORTH LAKE UNITED METHODIST CHURCH**  
The Rev. Harry Weeks, Pastor  
Every Sunday—  
9:30 a.m.—Worship service.  
10:30 a.m.—Sunday school.

**CONGREGATIONAL CHURCH**  
(United Church of Christ)  
The Rev. Daniel Kelin, Pastor  
Every Sunday—  
9:00 a.m.—Senior High Sun- day school.  
9:45 a.m.—Sunday school.  
10:00 a.m.—Morning worship.

**CHELSEA BAPTIST CHURCH**  
337 Wilkinson  
The Rev. James Stacey, Pastor  
Every Sunday—  
10:00 a.m.—Sunday school.  
11:00 a.m.—Worship service.  
Nursery care available during all services.  
6:00 p.m.—Junior and Senior Baptist Youth Fellowship.  
7:00 p.m.—Evening worship.  
Every Wednesday—  
7:30 p.m.—Bible study and prayer meeting.

**GREGORY BAPTIST CHURCH**  
The Rev. Grant Lapham, Pastor  
Every Sunday—  
10:00 a.m.—Worship service.  
11:15 a.m.—Church school.  
6:30 p.m.—Baptist Youth Fel- lowship.  
7:30 p.m.—Evening worship service.

**ST. BARNABAS EPISCOPAL CHURCH**  
20550 Old US-12  
The Rev. C. Walton Fitch, Vicar  
Telephone 426-8815  
Every Sunday—  
9:15 a.m.—Holy Communion, first, third, and fifth Sundays.  
9:15 a.m.—Morning Prayer, second and fourth Sundays.

**ST. MARY CATHOLIC CHURCH**  
The Rev. Fr. Francis Wahowiak  
Every Saturday—  
7:30 p.m.—Mass.  
Every Sunday—  
Masses at 6:30 a.m., 8:00 a.m., 10:00 a.m., and 11:30 a.m.

**ST. THOMAS EVANGELICAL LUTHERAN**  
The Rev. Daniel L. Matson, Pastor  
Saturday, Oct. 23—  
9:00 a.m.—Confirmation class.  
Sunday, Oct. 24—  
10:00 a.m.—Laymen's Sunday.  
Worship Service.  
11:00 a.m.—Sunday school and Bible class.

**MONDAY, OCT. 25—**  
7:30 p.m.—Sunday school teach- ers.  
Wednesday, Oct. 27—  
7:30 p.m.—Concordia Bible In- stitute.

**ZION LUTHERAN CHURCH**  
Corner of Fletcher, Waters Rds. (Rogers Corners)  
The Rev. John R. Morris, Pastor  
Thursday, Oct. 21—  
7:15 p.m.—Junior Choir.  
8:00 p.m.—Senior Choir.  
Saturday, Oct. 23—  
Youth Instruction Classes.  
9:00 a.m.—9th grade.  
10:00 a.m.—10th grade.  
11:00 a.m.—7th grade.

**SUNDAY, OCT. 24—**  
9:00 a.m.—Sunday school.  
10:15 a.m.—Worship.  
Tuesday, Oct. 26—  
November Newsletter deadline.  
7:30 p.m.—Women's shuffle- board.  
Wednesday, Oct. 27—  
7:15 p.m.—Junior Choir.  
8:00 p.m.—Senior Choir.

**SALEM GROVE UNITED METHODIST CHURCH**  
The Rev. Harry Weeks, Pastor  
Every Sunday—  
10:00 a.m.—Sunday school.  
11:00 a.m.—Worship service.

**CHELSEA MEDICAL CENTER**  
Every Wednesday—  
1:30 p.m.—Worship service.

Vinyl garments should not be stored in plastic drycleaner bags, according to extension specialists at Michigan State University. The dye in any printing on the bag can migrate to any vinyl garment as it hangs in your closet, they say. Once this happens, the dye can't be removed.

The first pigs came to America almost a century before the Pilgrims landed. Hernando DeSoto brought 13 pigs with him in 1539 when he conquered Florida.

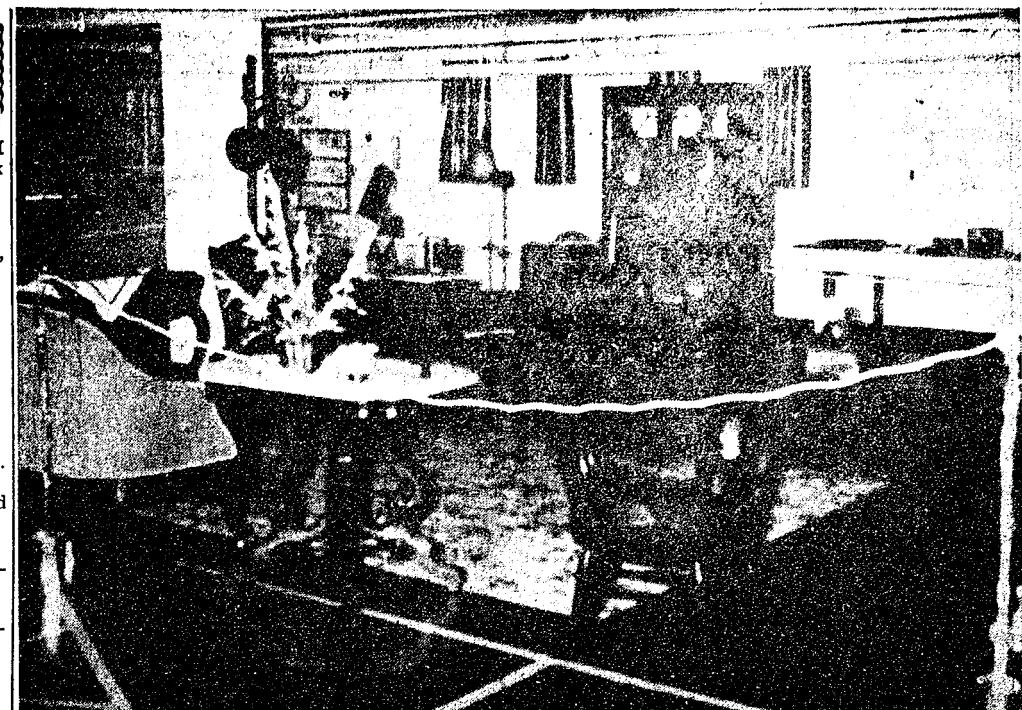
**THE BIBLE ANSWERS**  
QUESTION: Is "Modernism" as seen in religion today, a product of our modern times.

ANSWER: "Modernism" is a misnomer, for religious infidelity and rationalism is not at all new. During the Apostolic era there were those of the modernistic persuasion of our time: those who preached another gospel (Gal. 1:6-9), those who elevated human wisdom above the wisdom of God (I Cor. 1:18-29), those who denied the resurrection (I Cor. 15:12-19), those who denied the incarnation (I John 4:2, 3; II John 7), those who denied the Lord (Jude 3, 4; II Peter 2:1).

Groups which denied the fundamentals of Christianity were also found in the post-apostolic age: the Gnostics of the first century, the Marcionites of the second century, the Neo-Platonics and Manicheans of the third century, and the Pelagians of the fourth century.

Modernism is perhaps as vicious and dangerous an enemy as has ever confronted Christianity. This is because it is a subversive element found inside of Christianity, and seeks to discredit and undermine the Christian religion from within. Modernism is a rationalistic philosophy, negative in nature, that seeks a denial of every fundamental premise of Christianity, and while found inside Christianity, it is definitely UNCHRISTIAN. Modernistic philosophy is as old as Satan himself.

**CHURCH OF CHRIST**  
For questions or comments please write:  
13631 Old US-12, Chelsea, Mich. 48118



**ANTIQUE DISPLAY:** The model living room, part of the Chelsea Methodist Home's display of antiques related to the Home's history, features an old loveseat, marble topped table, china cabinet, and cane-backed straight chair. A dining room and bedroom are also included in the display, which will be open to visitors at Sunday's Open House and bazaar.

## SUNDAY'S SERMON

### ★ Happy Fellow

Have you ever noticed that some individuals always seem to "walk in the sunshine"? Each of us knows one or more such happy fellows. Life never seems to upset them; if anything is wrong in their world, we never know it.

Did you ever wonder why? Surely no one can go through life with some share of sorrow, some portion of the defeat and misery that life often hands out. The answer must lie in a personal unwillingness to accept that which is bad as permanent, and with a continued trust in a better to-morrow.

Take a page from the book of some happy fellow you know. Don't give in when some part of your world turns sour. Believe, pray and hope. Know that God will not desert you, will not forget you.

Do the best you can with each situation of life. When you have done your best, do not waste time worrying about any lack of success. Put your time to something useful that you can do now, to some planning for the things you can do tomorrow.

You will be a happy fellow.

## CONSOLIDATED REPORT OF CONDITION OF Chelsea State Bank

of Chelsea, Michigan, at the close of business September 30, 1971, a state banking institution organized and operating under the banking laws of this State and a member of the Federal Reserve System. Published in accordance with a call made by the State Banking Authorities and by the Federal Reserve Bank of this District.

ASSETS	Dollars Cts.
Cash and due from banks (including no unposted debits)	\$ 1,717,565.96
U. S. Treasury securities	4,575,685.57
Obligations of other U. S. Government agencies and cor- porations	199,875.00
Obligations of States and political subdivisions	2,613,591.17
Other securities (including \$36,000 corporate stocks)	59,350.00
Federal funds sold and securities purchased under agree- ments to resell	200,000.00
Other loans	11,525,704.35
Bank premises, furniture and fixtures, and other assets representing bank premises	333,354.26
<b>TOTAL ASSETS</b>	<b>\$21,225,526.31</b>

LIABILITIES	
Demand deposits of individuals, partnerships, and cor- porations	\$ 4,217,339.58
Time and savings deposits of individuals, partnerships, and corporations	13,320,993.01
Deposits of United States Government	435,251.81
Deposits of States and political subdivisions	616,302.48
Certified and officers' checks, etc.	149,811.86
<b>TOTAL DEPOSITS</b>	<b>\$18,739,698.74</b>
(a) Total demand deposits	\$135,705.73
(b) Total time and savings deposits	13,603,993.01
Other liabilities	424,645.72
<b>TOTAL LIABILITIES</b>	<b>\$19,164,344.46</b>

RESERVES ON LOANS AND SECURITIES	
Reserve for bad debt losses on loans (set up pursuant to IRS rulings)	\$ 180,774.20
<b>TOTAL RESERVES ON LOANS &amp; SECURITIES</b>	<b>\$ 180,774.20</b>

CAPITAL ACCOUNTS	
Equity capital, total	\$ 1,880,407.65
Common stock—total par value	400,000.00
(No. shares authorized 8,000)	
(No. shares outstanding 8,000)	
Surplus	800,000.00
Undivided profits	580,407.65
Reserve for contingencies and other capital reserves	100,000.00
<b>TOTAL CAPITAL ACCOUNTS</b>	<b>\$ 1,880,407.65</b>
<b>TOTAL LIABILITIES, RESERVES, AND CAPITAL ACCOUNTS</b>	<b>\$21,225,526.31</b>

MEMORANDA	
Average of total deposits for the 15 calendar days ending with call date	\$18,651,578.18
Average of total loans for the 15 calendar days ending with call date	11,414,540.27
Deposits of the State of Michigan	13,640.99

I, Paul G. Schaible, Jr., Vice President & Cashier of the above-named bank, do hereby declare that this report of condition is true to the best of my knowledge and belief.

PAUL G. SCHAIKLE, JR.

We, the undersigned directors, attest the correctness of this report of condition and declare that it has been examined by us and to the best of our knowledge and belief is true and correct.

PAUL E. MANN  
DUDLEY K. HOLMES  
JOHN P. KEUSCH  
Directors

State of Michigan, County of Washtenaw, ss:  
Sworn to and subscribed before me this 13th day of October, 1971.  
Dorothy L. Fowler, Notary Public  
My commission expires June 27, 1972.

## The Chelsea Standard



## Pre-Christmas Sale

### RYTEX ANTIQUE VELLUM:

Just in time for Christmas buying... luxurious vellum paper with the subtle laid-mark pattern. Paper colors in soft white or pale blue. Name and address, or monogram, printed in blue, dark grey or raspberry red. Handsomely gift boxed.

Man-sized Monarch:

100 sheets & 100 envelopes

or Princess-size:

150 sheets & 100 envelopes

or Gracious Semi-notes:

100 notes & 100 envelopes

**\$4.95**

(a \$9.90 value)

**EMBASSY INFORMALS** Always correct for invita- tions, brief lines, thank-you notes. Raised printing in jet black ink on white, invitation-weight notes.  
100 Informals & envelopes .....\$5.00  
(double quantity only \$2.50 more)

### MAIL ORDER COUPON

THE CHELSEA STANDARD  
CHELSEA, MICH. 48118

ANTIQU VELLUM: boxes at \$4.95 (check choices below)  
INCLUDE BONUS: ☐ (check) 50 extra, unprinted sheets at \$1.00 with order.

Princess Size ☐ White (3500) ☐ Blue (3550)  
Monarch Size ☐ White (3600) ☐ Blue (3660)  
Semi-Note ☐ White (N3500) ☐ Blue (N3550)  
Ink Color ☐ Blue ☐ Grey ☐ Red  
Imprint Style ☐ MC ☐ AL ☐ Monogram on sheets & address on envs. (this is \$1.00 extra)

Imprint Name \_\_\_\_\_  
(or monogram) \_\_\_\_\_  
Street \_\_\_\_\_  
City, State, Zip \_\_\_\_\_

EMBASSY INFORMALS: boxes (check choice below)  
☐ Regular Qty. at \$5.00 (800SR)  
☐ DOUBLE QTY. at \$7.50 (800DSR)

Imprint Name \_\_\_\_\_  
ORDERED BY: \_\_\_\_\_  
Street \_\_\_\_\_ Apt. \_\_\_\_\_  
City, State, Zip \_\_\_\_\_  
Account No. \_\_\_\_\_ Phone \_\_\_\_\_  
☐ Charge ☐ Check or M.O. enclosed \$ \_\_\_\_\_  
Sorry no C.O.D.'s. (Please include Sales Tax.)

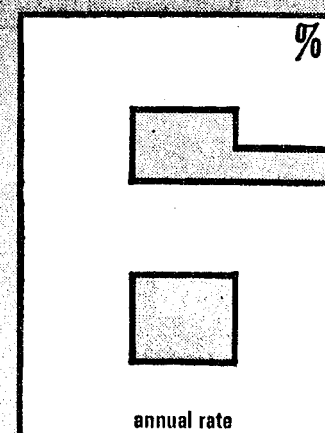
**YES**  
WE ARE MAKING  
LONG TERM FARM  
REAL ESTATE  
LOANS

SEE US

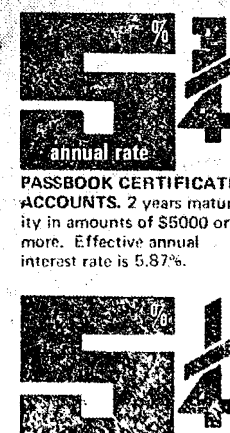


P. O. Box 1006  
Ph. 769-2411; 3645 Jackson Rd.  
Ann Arbor, Mich. 48108

**Get the saver's edge at the FED**



PASSBOOK CERTIFICATE ACCOUNTS. 3, 4, or 5 years maturity in amounts of \$5000 or more. Effective annual interest rate is 6.13%



PASSBOOK CERTIFICATE ACCOUNTS. 1 year maturity in amounts of \$1000 or more. Effective annual interest rate is 5.54%

Interest is computed daily.

**FEDERAL SAVINGS**  
the savings and loan specialists

Liberty at Division, West Stadium at Pauline, Huron Parkway at Platt, Plymouth at Nixon







**CHELSEA VILLAGE COUNCIL PROCEEDINGS**

October 19, 1971  
Council Room  
Regular Session.

This meeting was called to order at 8:00 p.m. by President Fulks. Present: President Fulks, Clerk Harvey, Administrator Weber, Trustees: Borton, Gorton, Musbach, Dmoch, Boylan and Chandler. Others present for the meeting were Elwyn Beach, Gene Miller, Charles Ritter, Thomas Eder, John Stepp, Donald Woods, Roy Greenleaf, Fred Mills, Oren Loasby, and Robert Daniels.

Bids for a 1972 Police Patrol car were received as follows: Chelsea Motor Sales, Inc., \$2,891.76; Palmer Motor Sales, Inc., \$2,690.00; Spaulding Chevrolet Sales and Service, \$2,496.00. The above prices include a trade-in of the present 1969 Ford Patrol car.

Motion by Borton, supported by Gorton to accept the low bid of Spaulding Chevrolet Sales and Service in the amount of \$2,496.00 for one (1) 1972 Police Patrol car including a trade-in of one (1) 1969 Ford Patrol car. Roll call: Yeas—Borton, Gorton, Musbach, Dmoch and Chandler. Abstained—Boylan. Motion carried.

Motion by Chandler, supported by Borton, to adopt a resolution approving a request from Chelsea Lanes, Inc. for transfer of ownership of 1971 Class C and ODM licensed business from Robert T.

Howe, and transfer location from 130 South Main Street, Chelsea to 1180 S. Main St., Chelsea, Michigan. Roll call: Yeas—Borton, Musbach, Boylan, and Chandler. Nays—Gorton, and Dmoch. Motion carried.

A discussion was held with representatives of the Recreation Planning Commission regarding the construction of an ice skating rink at the Chelsea Community Fairgrounds.

Motion by Dmoch, supported by Musbach to authorize the construction of a 200' x 85' ice skating rink at the Chelsea Community Fairgrounds at an approximate cost of \$3,000.00. Roll call: Yeas all. Motion carried.

Motion by Borton, supported by Boylan, to authorize payment to the firm of Finkbeiner, Pettis & Strout, sanitary sewer engineers, in the amount of \$2,500 from the Electric Fund for engineering services for September for the Sewer Expansion Program. Same sum to be repaid upon the sale of sewer bonds. Roll call: Yeas all. Motion carried.

Motion by Chandler, supported by Musbach, to transfer \$3,249.81 from the M-51 Major Street and Trunkline Fund to the M-51 Local Street Fund in accordance to Section 13 (d) (1) of Act 51 as amended. Roll call: Yeas all. Motion carried.

President Fulks submitted for

Council approval the name of Robert Schaeffer to fill a vacancy on the Chelsea Village Planning Commission.

Motion by Musbach, supported by Chandler, to accept the recommendation of President Fulks to appoint Robert Schaeffer to fill an unexpired three-year term on the Village Planning Commission. Roll call: Yeas all. Motion carried.

Motion by Boylan, supported by Gorton, to authorize and direct the Clerk to issue checks in payment of bills as submitted. General Fund, \$11,302.88; M-51 Major Street and Trunkline Fund, \$14,343.18; M-51 Local Street Fund, \$9,292.21. Roll call: Yeas all. Motion carried.

Motion by Gorton, supported by Borton, to adjourn. Roll call: Yeas all. Motion carried. Meeting adjourned.

Richard Harvey, Clerk.

To GR 5-3581.

Telephone Your Club News



WALLY WEBER

## Octogenarians Honored By Kiwanians

Chelsea Kiwanis Club held its annual dinner honoring area octogenarians at its weekly meeting Monday, Oct. 18.

Ten of the 19 area octogenarians known to the club were present for the meeting. They are: Lyman Adams, 83; Rha Alexander, 87; John Cook, 82; Watson Hart, 82; Dan Denton, 89; Earl Pettibone, 83; Irving Weiss, 83; Herman Gross, 84; Bill Hochrein, 82; and Harry Stofer, 82.

Nine other members of the exclusive group were unable to attend the dinner. Absent were Henry Engelhart, Otto Hinderer, Harvey Heininger, Elmer Winans, Albert Pielemeier, August Dorer, B. A. Soule, George Gater and Albert Chambers.

Those Chelsea residents knowing octogenarians not mentioned above should contact Robert Foster of Foster's Men's Wear.

Speaker for the evening was Wally Weber, the "Wizard of Words." Weber, currently a public relations representative of the University of Michigan's Athletic Department, was a backfield coach under Fielding Yost. Weber has been with the University since 1931, and was the freshman football coach for a number of years.

Weber related some of the history of the Michigan football teams of the early 1900's, and the growth of the football program until it reached its present form.



**OCTOGENARIANS:** The Chelsea Kiwanis club honored area members of the exclusive octogenarians club at their Monday night dinner meeting this week. Among those present at the dinner were, left to right) front row: Watson Hart, 82; Herman Gross, 84; Dan Denton, 89; and William Hochrein, 82. Back row, John Cook, 82; Rha Alexander, 87; Lyman Adams, 83, and Irving Weiss, 83. Also present at the dinner, but missing from the picture, were Earl Pettibone, 83, and Harry Stofer, 82.

## First Kiwanis Travelogue Will Be Presented Tuesday



DON COOPER

Chelsea Kiwanis Club will present the first program in its 11th annual Travel and Adventure travelogue series Tuesday, Oct. 26 at 8 p.m. in the Chelsea High school auditorium.

Opening this year's series will be Don Cooper with his "Trails of the Mountain West."

Cooper, a native of Montana and a travelogue producer for 12 years, will follow Coronado's trail as he came north into New Mexico searching for the legendary "Seven Cities of Gold." He will retrace the historic mountain trails used by the men who first conquered and others who later explored and settled our great mountain West.

The theater for the program is the entire continental divide from New Mexico to Alaska—national parks, Indian cliff dwellings, an all-girl rodeo, a forest fire, wildlife and Mt. McKinley—all will be explored along the way.

Cooper, who was born and raised in lumber camps, is the son of the late George R. Cooper, state senator from Montana.

A natural humorist of the "Will Rogers" type, Don has become known from coast-to-coast for his delightfully humorous and uninhibited narration.

His films cover the most unusual events and sights found in the Mountain West, and all of his film journeys take the audience off the beaten path to find extra-



## BOY SCOUT NEWS

### TROOP 420

Boy Scout Troop 420 met Oct. 18 at the American Legion Post No. 31. The boys worked on Morse code in preparation for the camp-out which will be held Oct. 22 through 24 near Manchester.

Ordinary scenery and thrilling experiences.

Cooper has presented portions of his films on national television network programs. He began his TV career in the fall of 1958, appearing several times on "Bold Journey." Cooper has turned down attractive offers from Hollywood TV stations and others, preferring to remain in the travelogue field.

## 4-H Clubs

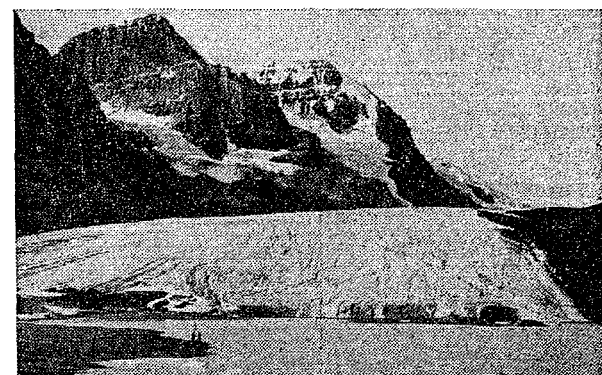
### GARFIELD GUYS

Mrs. Donkin and Mrs. Borton have started a new 4-H group for some fourth and fifth graders. We have named our group the Garfield Guys.

Our officers for this month are: president, Julie Otsford; vice-president, Mary Lynn Noah; secretary, Cathy Villemure; treasurer, Kelly Borton; cookie committee, Tracy Barr and Jamie Atkinson; clean-up, Katie Donkin; recreation leader, Cindy Bareis; song leader, Carrie Lane; news reporters, Cathy French and Tracy Cattel.

We are first-making a tote bag to put our sewing equipment in. Carrie Lane had a birthday, and we all had fun.

Tracy Cattel, reporter.



**ATHABASCA GLACIER**, located high in the Canadian Rockies in Alberta's Wood Buffalo National Park, is only one of the scenes which will be presented in Don Cooper's "Trails of the Mountain West," the opening program in the Chelsea Kiwanis Club's 11th annual Travel and Adventure series. "Trails of the Mountain West" will be shown Tuesday, Oct. 26, at 8 p.m. in the Chelsea High school auditorium.

**NOW OPEN IN NEW LOCATION**  
**DEXTER PIZZA PARLOR**  
7928 SECOND STREET  
(Behind Car Wash)  
**PHONE 426-8681**

Carry-Out Pizza - Chicken - Shrimp



**HOURS: 5 p.m. to 11 p.m., Sun., Tues., Wed., Thurs.**  
**5 p.m. to 1:30 a.m. Friday and Saturday**

Closed Mondays

# THE KIWANIS CLUB OF CHELSEA PROUDLY PRESENTS A TRULY OUTSTANDING

# TRAVEL & ADVENTURE SERIES

**6 FULL COLOR FILMS NARRATED IN PERSON  
BY THESE NATIONALLY-KNOWN ADVENTURERS:**

**TUESDAY, OCTOBER 26th**

★ **DON COOPER**  
'Trails of the Mountain West'

**SATURDAY, NOVEMBER 20th**

★ **DICK REDDY**  
'Adventures in Switzerland'

**SATURDAY, JANUARY 15th**

★ **JAMES FORSHEE**  
'Incredible Japan'

**SEASON  
TICKETS  
\$7.00**

**TICKETS NOW  
ON SALE**  
THESE SHOWS ARE RATED  
**"G"REAT!**

Treat Yourself and Your Family  
To A Season of Fun, Beauty  
and New Knowledge thru  
Kiwanis' 11th Annual Travel &  
Adventure Series

Tickets Available at Many Local  
Stores or From a Kiwanian

**SATURDAY, FEBRUARY 27th**

★ **JULIAN GROMER**  
'Wheels Across America'

**SATURDAY, MARCH 25th**

★ **JOE ADAIR**  
'Ethiopia - Fabled Kingdom'

**SATURDAY, APRIL 15th**

★ **JAMES METCALF**  
'The Open Arms of Portugal'  
A GLIMPSE OF PARADISE

**PLACE:** Chelsea High Auditorium  
**TIME:** 8:00 P.M. Sharp  
**PROCEEDS:** To Local Area Kiwanis Projects

**Kiwanis Expects an Early Sellout  
For This EXCEPTIONAL Series  
BUY YOUR TICKETS SOON!**



## Kathy Kealy Becomes Bride of William Kushmaul

Kathy Kealy became the bride of William Kushmaul in an evening ceremony, performed by the Rev. Clive H. Dickens at the Chelsea United Methodist church, Friday, Oct. 15.

Kathy is the daughter of Mr. and Mrs. Harry Kealy. William is the son of Mr. and Mrs. Robert Kushmaul.

Honor attendants were Miss Denise Bycraft and Richard Schenk. A reception following the ceremony was held at the home of the bride's parents.

After a wedding trip to northern Michigan, the couple will reside at 409½ East St.

## Blacklaws Mark 25th Anniversary

Florence and Edward Blacklaw were given a surprise 25th wedding anniversary party at the home of their daughter and son-in-law, Cindy and Kenneth Beauchamp, Sunday, Oct. 17.

The party was given by the Blacklaw's children, Mrs. Kenneth Beauchamp, Mrs. Robert Mercer, of Ypsilanti, Ned Blacklaw, Miss Teri Blacklaw and Stuart Blacklaw, all of Chelsea.

Among the 60 close friends and relatives who attended the buffet celebration were the Blacklaw's four grandchildren, Kenny and Ward Beauchamp of Chelsea, and Stacy and Jeff Mercer of Ypsilanti.

Out-of-town guests included Mr. and Mrs. Wayne Petersen of Neenah, Wis., Mr. and Mrs. William Bernard of Toledo, O., and Mr. and Mrs. Tom Bernard of Flint. Mr. Blacklaw's brother, James Blacklaw, and his two sisters, Helen MacFarlane and Isa Wiggins, came from Detroit for the occasion.

Among the many gifts that the Blacklaws received was a money tree given them by their children.

## Karen Reynolds Chosen Cheerleader At Freed-Hardeman

Miss Karen Reynolds, daughter of Mr. and Mrs. Carl Reynolds, 6435 Werkner Rd., Chelsea, has been selected basketball cheerleader at Freed-Hardeman College, Henderson, Tenn., according to Miss Rosa Whitehead, sponsor. Miss Reynolds, a freshman at F.H.C. plans to major in physical education.

The 10-member Lion cheering squad was selected by popular vote after trying out before the student body.

## Janis Fitzsimmons, Howard Stoll Are Wed at Methodist Church



Mrs. Howard A. Stoll

Janis Ann Fitzsimmons became the bride of Howard Arthur Stoll in an evening, candlelight ceremony performed Saturday, Oct. 16 by the Rev. Clive Dickens in the United Methodist church.

Janis is the daughter of Mr. and Mrs. Jack C. Fitzsimmons, 1410 North Territorial Rd., and Howard is the son of Mr. and Mrs. Arthur N. Stoll, 517 Glazier Rd.

For her wedding, the bride chose a demi-bell silhouette gown in princess train featuring a madderin neckline and bishop sleeves. Venice lace interlaced with satin ribbon banded the bodice, skirt and detachable train. The elbow-length, four-tiered illusion veil of peacock sole was held by a simple satin pillbox.

Maid of honor Debbie Fitzsimmons, a sister of the bride, was attired in an empire waisted gown featuring a demi bell skirt and bishop sleeves. The vestment bodice of the gown was fashioned of brown Venice lace with satin accents, and topped an ivory chiffon skirt. Her three-tiered ivory camelot veil was shouldered-length.

Bridesmaids: Miss CeCe Ritter, Mrs. James R. Gilmore, a cousin of the bride, and Miss Kathy and Mary Lou Stoll, sisters of the bridegroom, were dressed in gowns identical to that of the maid of honor.

For her daughter's wedding, Mrs. Fitzsimmons chose a floor-length, olive green chiffon gown, with shrimp colored banding at the empire waist, and matching accessories.

Mrs. Stoll wore a floor-length, ruby red velvet gown with silver accessories.

Vocalist was Bruce Galbraith who sang, "Bless This House," and "The Lord's Prayer."

Best man was James LaFontaine. Ushers were Ron Bush, Richard Bollinger, Donald Bollinger, and David Stoll, a brother of the bridegroom.

Mrs. Ralph Krichbaum attended the guest book at the reception following the ceremony. Mrs. Mike Balze served the wedding cake. Mrs. Tom Steele poured punch and Mrs. Richard Steinaway poured coffee.

The bride wore an orange and white knit suit with brown accessories as the newlyweds left for a week-long wedding trip through the southern states. Upon their return, they will make their home at 20825 North Territorial Rd.

The bride is employed by Central Fibre Products as a receptionist. The bridegroom is service manager of Gateway Sports Centre.

## Organ-Piano Studio Opens

La Vonne Harris, wife of Assistant Band Director Ronald Harris, has opened an organ-piano studio at 175 Park St., in Chelsea.

Mrs. Harris studies piano with Madeline Coppenhaver, Walhalla, Neb.; Dr. Roy Benson, Graceland College, Lamoni, Ia.; and Gilbert Spector, Kansas State College, Pittsburg, Kan.

She studied pipe organ under Martha Pate, KSC; Mary Lou Robinson, Central Michigan University and William Kuhlmann, Luther College, Decorah, Ia. Mrs. Harris is a music major and has performed in piano and organ student recitals at the above institutions.

Superior ratings have been earned by Mrs. Harris through the National Guild of Piano Teachers in 1952 and 1953 in Sioux City, Ia. The Nebraska School Music Activities Association awarded her superior ratings in piano at Wayne State Teachers College in 1955, 1956 and 1957.

A certified Michigan music teacher of Michigan Music Teachers Association, Mrs. Harris taught seven years in West Branch. Several ratings have been received by her pupils in district and state high school festivals.

Four advanced pupils were awarded scholarships for study at Interlochen Music Camp for the All-State two-week program. One pupil achieved first place in MMTA music theory contest in 1967. Mrs. Harris taught vocal music in West Branch Elementary school in 1967. She taught piano and organ in Waukon, Ia., 1968-1971.

**GIFT FROM THE POPE**  
The American Bible Society has received from Pope Paul VI the first color New Testament facsimile of the 4th century Codex Vaticanus B, one of the two earliest Bible manuscripts still in existence.

## Club and Social Activities

### CAMERA CLUB

Chelsea Camera Club met at the Sylvan Town Hall Tuesday, Oct. 19 with 15 members present.

Speaker for the evening was Paul Papsdorf who showed and narrated films he had taken of the Western National parks.

Refreshments were served at the close of the meeting.

The next meeting will be held Nov. 16.

### KINDER KLUB

The Oct. 12 meeting of the Kinder Klub was held at the home of Mrs. Edson Whitaker. Twelve members and three guests, Mrs. Sherry Ziegler, Mrs. Pat Guenther and Mrs. Sylvia Ford were present.

Dorothy Brooks from the Chelsea Greenhouse gave a demonstration on flower arranging. The Nov. 9 meeting of the club will be held at the home of Mrs. James Krichbaum.

### PAST NOBLE GRANDS

Past Noble Grand Club of Chelsea, Rebekah Lodge met at the home of Mrs. Al Heins Thursday, Oct. 14, with Mrs. Lucille Alstaeter as co-hostess.

Several members attended the meeting in Halloween costumes. Mrs. Gladys Breitenwischer was unable to attend due to illness.

The club voted to sponsor a Christmas party for a local charity group instead of exchanging Christmas presents this year. Napses are to be turned in at the next meeting.

Games were the evening's entertainment. Winners were Mrs. Nixon and Mrs. Packard. Mrs. Dorothy Keezer brought the surprise packages.

The next meeting will be held at the home of Mrs. Steve Lane, Nov. 11 at 7:30 p.m.

The next lodge meeting will be held on Oct. 19 at 8 p.m. The last district meeting will be at Martha Lodge, Jackson, on Oct. 21.

### WESLEYAN GUILD

The Wesleyan Service Guild of the Methodist church met in the education unit Tuesday evening. There were 15 members and one guest present.

Refreshments were served by Mrs. Minnie Erskine and Mrs. Helen Harrison.

After a business meeting conducted by the chairman, Mrs. Bernice Packard, in which such matters as the contribution to the coming church bazaar were discussed, the meeting was turned over to Mrs. Harrison for meditations, and then to Mrs. Jane Schairer who gave a meaningful talk on "Love is a many splendored thing."

## Personal Notes

Mrs. Julius Reule left Monday, Oct. 11 to visit her daughter and husband, Mr. and Mrs. Pat Mangene of Worth, Ill. She returned home Sunday, Oct. 17 by plane.



## Carolyn Smith, W.L. Sherock Speak Vows

Carolyn Jane Smith became the bride of Wallace L. Sherock in a ceremony performed Saturday, Oct. 16, by the Rev. Warner Siebert of St. Paul United Church of Christ at the home of the bride's parents, Mr. and Mrs. Ellsworth C. Smith, 350 Washington St.

Wallace is the son of Mr. and Mrs. Matthew Sherock, Sr., of Howell.

Honor attendants at the intimate ceremony were Marilyn Smith, twin sister of the bride, and Mrs. Roger Damm of Sanford. Best man was Matthew Sherock, Jr., a brother of the bridegroom, of Garden City.

A reception was held at the home of the bride's parents, following the ceremony.

Carolyn is a graduate of Chelsea High school and Central Michigan University. She has taught in the Hudson area schools for the past two years.

Wallace is vice-president of the Ypsilanti Savings Bank.

The newlyweds will make their home in Belleville.

## Older Adult Groups Will Join for Nov. 19 Meeting at St. Paul's

Songs and readings, in charge of Mrs. Herbert Paul, were highlights of the program and devotional period at the Oct. 16 meeting of the Older Adult Group of the Methodist church. Also included was the customary pot-luck dinner at 12:30 p.m. and observance of the birthdays of three members whose birth dates are in October. The three are Mrs. Blanche Mohrlock, Mrs. Neva Prudden, and Mrs. Gladys Klump. The birthday cake was provided by Mrs. Freda Bommer.

The Methodist group has been invited to be guests of the Older Adult Group of St. Paul United Church of Christ at a pot-luck dinner in the church fellowship hall at 12:30 p.m. Friday, Nov. 19. Because of that meeting the Methodist group will not hold the November meeting at their own church, their next regular gathering being scheduled for Dec. 18. On the committee for that meeting are Mrs. Paul, Mrs. Hilda Pierce and Mrs. Winifred Coffron.

## CHS Football Schedule

Oct. 22-Dundee	home
Oct. 29-South Lyon	away
Nov. 5-Milan	home
Nov. 12-Jackson N.W.	away

## SCHOOL LUNCH MENU

Week of Oct. 25-29

Monday, Oct. 25-Beef stew, cabbage salad, bread and butter, peach cobbler, milk.

Tuesday, Oct. 26-Pizza with meat, cheese, buttered vegetable, bread and peanut butter, glass of juice, mixed fruit, milk.

Wednesday, Oct. 27-Savory beef over whipped potatoes, buttered beets, cheese biscuits, butter, chilled pears, milk.

Thursday, Oct. 28-Pig-in-a-blanket, catsup or mustard, bread and butter, honeyed carrots, pineapple wheel, milk.

Friday, Oct. 29-Tunafish casserole, sweet peas, bread and butter, spice cake, vanilla ice cream, milk.

## Magic Mirror Beauty Salon

Open Monday thru Friday

9 a.m. to 9 p.m.

Saturday, 8 a.m. to 3 p.m.

PHONE 665-0816



AN OPEN HOUSE will honor Mr. and Mrs. Laurence E. Noah's 50th wedding anniversary this Sunday, Oct. 24. Mr. and Mrs. Noah were married on Oct. 26, 1921 in Albion, and have been Chelsea area residents all their lives. Mrs. Noah is the former Esther Widmayer. Mr. Noah is still an active farmer. The open house will be given by the Noahs' children, L. Duane, Mrs. Wilfred (Donna) Lane, and Lynnwood Noah, at the Noahs' home, 8825 Werkner Rd. In addition to their three children, the Noahs have seven grandchildren.

Come Enjoy the last one of the season!

## SMORGASBORD

Saturday, Oct. 23 - 5 to 7 p.m.

Adults - \$2.50 Children - \$1.00

**NAPOLEON UNITED METHODIST CHURCH**  
NAPOLEON, MICH. - 10 Miles West of Manchester

Notice of  
**PUBLIC HEARING**

A public hearing will be held Tuesday, November 2, 1971 at 8:00 p.m. in the Chelsea Village Council Chambers, 104 East Middle Street to consider a request for rezoning of the following described property from R-2 Residential to Transitional Residential-Office District:

Lot 2, Block 16 of Elisha Congdon's Third Addition.

This parcel is located at the north-east quadrant of South Main and East Summit Streets.

## VILLAGE OF CHELSEA

RICHARD HARVEY, CLERK



ENGAGED: Mr. and Mrs. Bauer of Williamston announce the engagement of their daughter, Marilyn Hayne, to Robert Roland Runyan, son of Mr. and Mrs. Clarence Runyan of Ill. and the late Mr. Runyan. Miss Bauer is a graduate of Williamston High school and is employed as a secretary by Delta Airlines, Chicago. Mr. Runyan is a Delta Airlines pilot. She is the granddaughter of Mr. and Mrs. George R. Jr., of Chelsea, and Mrs. Proctor of Chelsea and Mrs. Proctor of Dexter. A wedding is planned.

## Brownies...

Brownie Troop 169 met Monday, Oct. 18 with 25 Brownies present. The meeting was held at the home of Mrs. Satterthwaite. We did our first project. We hope they will be very useful to us. We will meet when we hike. Treats furnished by Renee Satterthwaite.

## Personal Notes

Viola Knoll was visited by her niece and husband, Mr. and Mrs. Tom McGuire of Inkster, Mich., Oct. 17.

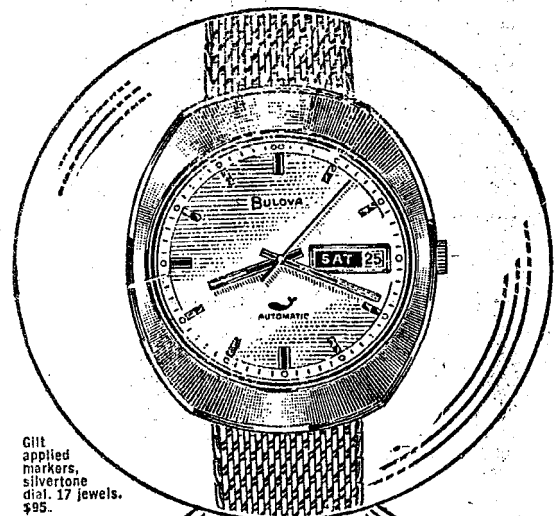
## PIANO - ORGAN STUDIO LaVonne Harris CERTIFIED TEACHER

175 Park Street  
Chelsea, Mich.  
Phone 475-7134

## VILLAGE BEAUTY SALON

LORETTA - CINDY - EULA  
MARGE - ARLENE - SARAH

107 N. MAIN PHONE 475-5421  
OPEN MONDAY THRU SATURDAY  
Evenings By Appointment



## BULOVA

The watch that tells all.  
Time. Date. Day.  
Automatically.

Your present watch may give you precise time. But if you happen to have the wrong day, it's as though your watch was precisely 24 hours fast. Or slow. Why get in such a fix, when you can tell the day and date at a glance with a Bulova?

Matching blue dial and strap. Stainless steel case. 17 jewels. \$80.

All stainless steel. Depth tested to 333 feet. 17 jewels. \$95.

## Winans Jewelry

No Need To Go Any Further  
For Prescriptions To Be Filled  
and Quality Frames than

## WINANS OPTICAL

PHONE 475-1233  
114 N. Main (In Sylvan Hotel) Chelsea, Mich.

**DAVID WINANS, Optician**  
(30 Years with Johnson Optical Co.)  
APPOINTMENTS NOT NECESSARY

## DANCER'S

BASEMENT  
Chelsea's Friendly Dept. Store

## SAVINGS BY THE YARD

SEW GLAD! Come gather up bolts of buys... we help you save on every yard. Choose wools, blends, polyesters, knits, and many others... in time for the holidays, too.



## Gridders of the Week



**TIM LANCASTER (30)**, a junior halfback, is establishing a reputation as a speedster this year, his first year of varsity football. He's been playing football since seventh grade, is a pole-vaulter, and was a varsity wrestler in his sophomore year. He's a member of the Ski Club, the concert band, and the St. Paul Senior High Fellowship and choir. Tim currently plans to study engineering following his graduation next year. He likes both snow and water skiing, and is a golfer and occasional hunter. He is the son of Mr. and Mrs. Charles Lancaster, 607 Washington St.

**JEFF DANIELS (80)**, a junior end, is playing his fifth year of football, his first on the varsity this year. He's also played baseball and basketball for five years, joining the varsity baseball team in his sophomore year. Jeff is a ski club member, a junior class representative on the student council, and a member of the high school choir. He still finds time to be involved in scouting, play jazz and pop piano, and work full-time for Chelsea Lumber Co. during the summer. He also likes to water ski, snow ski, and go camping with friends. Jeff is the son of Mr. and Mrs. Robert L. Daniels, 665 Washington St.

## Letters to the Editor

Huron Clinton Metropolitan Park Authority  
Dear Sir:

I am writing to you in regard to the proposed Mill Creek Park in Lima township, in hopes it will help to convince you that this is not the place for a park of that kind. We do not need a park of that kind in Washtenaw county. As for the people from Detroit, it is too far away from them. How are the poorer class of people going to get out and back 120 miles? You need it nearer to Detroit to accommodate them.

This land is too valuable for farming to take it for a park. It is some of the best farm land in Washtenaw county and is very suitable to farming with the modern machinery of today. Besides, many valuable homes would be destroyed. There is not one run-down neglected farm or home in the whole 4,080 acres. It seems foolish to take this valuable property for a park when we have so many thousands of acres that would make just as good a park as this, and is no longer suitable for farming with modern machinery. It was good farm land in the days of horses and oxen. It could be bought much cheaper and would not disturb scarcely anyone, where this would work a hardship on a great many.

Thousands of acres upstream would be affected by backing the water up. I am not going to say that the figures on the map your engineer is basing his study on are not correct, but there seems to be two sets of figures, and the ones he is going by don't correspond with the ones at the drain commissioner's office. After all, the water is what tells the story. We know what it did after heavy rains when the dam was in at Jerusalem. And it will do the same thing again. It will slow the water flow up so that after a heavy rain the sediment will settle and soon we cannot keep our tile and ditches open. When we ask how old these maps are that you go by nobody seems to know, and they tell us that they try to keep them up to date, is the only satisfaction we get. This creek runs through the center of our farm, the full length of the farm and I have taken particular notice of the water flow this summer. As low as the water has been in the creek nearly all summer with the seepage and the evaporation from a 650-acre shallow lake I don't see how there could possibly be any water to go over the dam downstream, and we have had drier summers than this in the past. If you let some of the water out at that time it will make a bigger mess than ever. We have spent a lot of time, effort and money to get the information and facts for you to consider, but perhaps it may save both you and us much court costs later.

The following have adopted resolutions opposing the proposed Mill Creek Park in Lima township, the Washtenaw County Board of Supervisors, Lima Township Board, Sylvan Township Board, Sharon Township Board, Freedom Township Board, the Chelsea School Board, Chelsea Village Council, Farm Bureau, Chelsea Rod & Gun Club, Lima Township Zoning Board, Sylvan Township Zoning Board, Sharon Township Zoning Board, Chelsea Knights of Columbus, Chelsea Business Men and the implement dealers in the surrounding area, over 1,500 signers to the petitions opposing it—in fact, the entire community and surrounding area. So we are pretty well organized to oppose it. You have Mr. Mills' report on the effect it would have on the Chelsea school, and I know what it is to try to operate a school without sufficient funds. I was on the school board in our district as treasurer for 37 years.

This community in the area of Jerusalem has given more boys who have sacrificed their lives for our country than any other place around here and now to ask their folks to leave their homes, I think is a dirty shame. This land was settled by industrious farmers who knew farming and how to take care of the land and it is in better condition today than it was when it was taken up from the government.

Very truly yours,  
Sylvester J. Weber.

Dear Editor:  
In the Sept. 16 issue of The Chelsea Standard, there appeared on page 11 an advertisement concerning the peace symbol. I could care less about its origin or meaning. This article attempts to be reliable by using facts from the magazine, New Yorker, but

does not quote from it. The article just explains what the magazine says.

People who use the peace symbol today are not showing an "enemy flag," just their concern for peace.

Emblems now days mean what the user wants them to mean. The Christian Cross is an emblem of the Klu Klux Klan.

I do not have to use an emblem. Peace.  
Tom Thomson.

To the Editor:

It has come to our attention that certain people in the community are campaigning against supporting Chelsea's Community Chest this year. This action is apparently based upon a stand taken by the Sportmen's Alliance of Michigan (SAM), which opposed support by the Michigan United Fund for the National Council on Crime and Delinquency (NCCD) and the Michigan Council on Crime and Delinquency (MCCD), which organizations allegedly support certain proposed gun legislation.

SAM's position on gun controls appears to be more restrictive than NCCD's. Also, SAM seems to be misinformed, inasmuch as no NCCD money has gone for gun legislation since 1969 and no money has ever gone from MCCD. These groups are not political groups nor are they lobbying groups. They merely make recommendations (LESS restrictive). Also, for you who respect the National Rifle Association, NRA is in sympathy with the recommendations by NCCD.

If you give \$57 to Chelsea Community Chest, one penny goes to NCCD. That is one out of 5,700!

Would you be willing to visit a Multiple Sclerosis patient and tell him you couldn't give this year because one penny out of 5,700 would go to NCCD? Or tell it to the patient dependent on research by the United Cerebral Palsy Association or the Heart Association. These and many other worthy groups need your support badly. Don't let them down because one penny out of 5,700 is going to a group which was unfairly accused.

Because of this and other problems encountered this year, the Community Chest Campaign is being extended until the end of October. You will have time to correct any action you may have taken too hastily with your payroll pledge or contribution. We will accept payroll deductions or contributions for our 1972 budget goal of \$26,007 any time between now and the end of 1972.

If you or your company would like to make an "extra" gift this year to help us overcome our losses due to the SAM action, we would be most grateful.

Sincerely,  
James F. Hoffmeyer,  
Chelsea Community Chest Campaign Chairman.

To the Editor:

When school started I was happy! At last, I thought, we will see less of the dirty, "hippy" type youth on our streets. For who can deny we do have a pleasant town. And how many parents will allow their children to go to school so dirty? To sit in a classroom full of dirty hair and smelly feet must be a very unpleasant way to spend a day. For who can grasp the fundamentals of new math and changing classes while trying not



**GRAND OPENING:** The grand opening of the new Hilltop store at 1414 S. Main will be held this Friday and Saturday. Fifty customers will be given prizes worth a total of \$1,000, and there will be smaller prizes and refreshments for all those who

drop in during the two-day celebration. Hilltop has been operated for 17 years by Huey Hardy and Bob Shears, and now, George Shaw has joined the corporation.

## Hilltop Showing New Store

Chelsea's Hilltop will be celebrating the grand opening of its new store at 1414 S. Main this Friday and Saturday.

There will be treasure chest prizes worth a total of \$1,000 given away to 50 lucky customers, and smaller gifts, coffee and refreshments for all who visit the newly opened store during both grand opening days.

In addition to changing its location, Hilltop has changed the services it offers customers, and a new member has joined the corporation.

Bob Shears, and Huey Hardy, who have owned and operated Hilltop for the past 17 years, have been joined, approximately three months ago, by George Shaw.

Hilltop, Shaw said, has expanded from a basic plumbing and heating center to a business which features a full line of Kelvinator

appliances, bathrooms, kitchens, electrical supplies, bath and kitchen accessories, small appliances and complete hardware, tool and painting supplies.

According to Shaw, the center will not only continue to do contracting work, but will also place new emphasis on catering to the do-it-yourselfer. "Since plumbing and heating contracting costs have risen," Shaw said, "we want to become a center for those who want to do their own work."



**THE BOLD LOOK**  
of a

**CHELSEA JAYCEE**

Join the New Breed of Leaders!

**CHELSEA JAYCEES**

CLIP AND SEND TO P. O. BOX 277, CHELSEA, MICH. 48118

Name \_\_\_\_\_

Address \_\_\_\_\_

Phone \_\_\_\_\_ Age \_\_\_\_\_

Or Phone

475-2543 after 6 p.m., or 475-8065 anytime

## Varsity Team Raising Funds for Baseball Clinic

A newly organized group of parents, hoping to send 18 Chelsea high school varsity baseball players to a spring baseball clinic in Fort Lauderdale, Fla., will be selling cider, pretzels, and coffee, at the Homecoming game Friday night.

The sale will be the first of a series of fund raising projects sponsored by the parent group which was organized Monday evening at a meeting called by Carl Genske, Chelsea baseball coach.

The new group hopes to raise approximately \$3,000 to send the players to the first Chelsea Baseball Clinic, a one-week extensive instruction and practice session, to be held in Ft. Lauderdale during the spring vacation.

The baseball clinic, Coach Genske hopes, will help Chelsea capture the State Championship this year.

The large, soft pretzels, cider and coffee will be found near the 20-yard line on the north end of Niehaus Field this Friday night.

Telephone Your Club News  
To GR 6-3581.

## We Got DOUBLE KNITS

... AND HOW!

- ★ Farah and Haggar Slacks
- ★ Curlee Suits and Sport Coats
- ★ Van Heusen Dress Shirts
- ★ RainFair All-Weather Coats

AND, YES ...

Even Stetson Hats in Knit Fabric

The New Wide Belt Loop Knit Slack  
Needs a Fine Hickock Wide Belt.

The New Long Collar Knit Shirt  
Needs a Sharp Wide Tie By Regal.

SHOP NOW - Stock Will Never Be More Complete!  
Remember Dec. 25th ... It's Later Than You Think.

**STRIETER'S MEN'S WEAR**

"The Place To Go for Brands You Know"

## WEEK-END SPECIALS

10-OZ. NO-RETURN BOTTLES

**Pepsi-Cola ... 8 pac 89c**

10-OZ. BAG CURTISS FLAVORED

**Marshmallows ... 20c**

Come in and see our

**GOBLIN SPECIAL**

Halloween is just around the spooky corner.

Stock up now on

**TRICK & TREAT CANDY**

200-COUNT, 2-PLY SPARTAN

**Facial Tissues ... 25c**

**Cigarettes, \$3.39 crtn.,  
39c pkg.**

ICE COLD BEER & WINE - LIQUOR

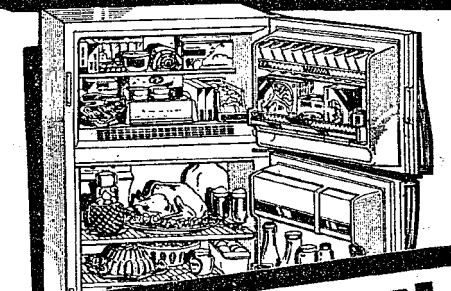
**RICK'S  
MARKET**

2090 M-52

PHONE 475-2698

## General Electric FACTORY BARGAIN DAYS

Save on Refrigerators - Freezers - Washers - Dryers - Dishwashers - Ranges - Stereo - Color TV - Black & White TV!



**SAVE NOW!**

Model TBF-18SM

**GENERAL ELECTRIC 17.6 cu. ft. NO-FROST REFRIGERATOR-FREEZER—ONLY 30½" WIDE! 165-lb. freezer; 3 refrigerator shelves; 1 slide-out, 1 adjustable; rolls out on wheels! Add an Automatic Icemaker now or later (at extra cost).**

**Now Only \$319<sup>95</sup>**



**PRICE REDUCED!**

Model CA-12D

**GENERAL ELECTRIC 11.6 cu. ft. UPRIGHT FREEZER HOLDS up to 406 LBS. FROZEN FOODS with bookshelf convenience. Temperature control, 3 cabinet shelves; 4 more and juice can rack in door. Built-in tumbler lock.**

**Now Only \$199<sup>95</sup>**

EASY TERMS with Approved Credit

**HEYDLAUFF'S**

(Formerly Frigid Products)

113 N. Main St.

Ph. GR 9-6651



MAUSOLEUMS ★ MONUMENTS  
BRONZE TABLETS ★ MARKERS

**BECKER  
MEMORIALS**

6033 Jackson Road  
ANN ARBOR, MICHIGAN

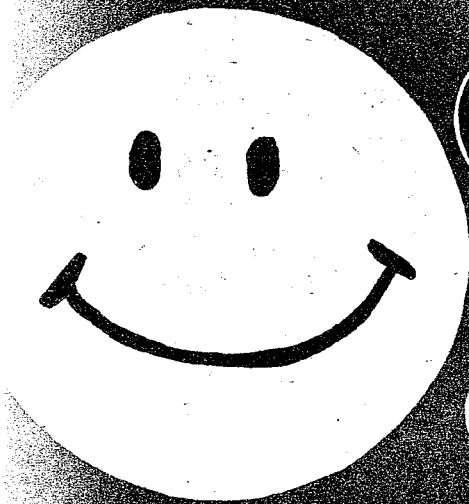


# BUDGET-WISE STORE

116 S. MAIN

CHELSEA, MICHIGAN

Ph: 475-7501



## SHOP SAVE SMILE!

SALE STARTS NOW ENDS SUNDAY OCT. 31



### TRICK or TREAT CANDIES

- Clark Junior Bars
- Delicious Suckers
- Pixie Sticks (candy that pours from a straw)
- Swell Bubble Gum
- Apple Stix Kisses
- Turkish Taffy

SAVE Up To 40%

Reg. 79c

**59c**  
Box or Bag

LIMIT TWO PKGS. with Coupon Inside



### PLASTIC TRASH BAGS

30 Gallon Size - with Ties

8-Count per Pkg.

- HEAVY DUTY
- LEAK PROOF

ADDITIONAL  
Pkgs. 39c Each  
During Sale

Reg. 98c

**33c**  
Pkg.

LIMIT ONE PKG. with Coupon Inside



Heavy Duty - Extra Wide  
DIAMOND

### ALUMINUM FOIL

8" x 25-ft.  
37.5 Sq. Feet

ADDITIONAL  
Rolls 55c Each  
During Sale

Reg. 79c

**49c**  
Roll

LIMIT TWO ROLLS with Coupon Inside



### 6-FOOT PLASTIC FLOOR RUNNER

RIBBED TRANSPARENT

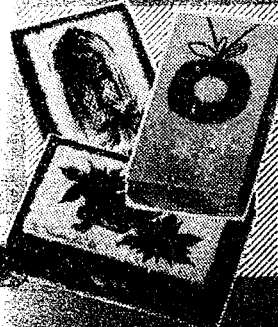
- Door Mat
- Shelf Liner
- Pet Feeding
- Laundry Floor

ADDITIONAL  
Runners 29c Ea.  
During Sale

Reg. \$1.00

**12c**  
Each

LIMIT ONE with Coupon Inside



### CHRISTMAS CARDS

25 Beautifully Inscribed  
Cards and Envelopes.

Solid pack box. Choice  
of Fifteen original patterns.

No Limit - While They Last!

Reg. \$2.00

**47c**  
Box

### FIRST QUALITY ONE SIZE PANTY HOSE IN THE PINK BOX

Available in Cinnamon,  
Taupe, Coffee and  
Off-Black

Reg. \$1.99

**49c**  
Pair

LIMIT ONE PAIR  
with Coupon  
Inside

### BRUSHED ORLON BOTTIE SOX

- Stretches to fit all sizes
- Keep your feet cozy warm
- Ideal as bed socks, boot wear or casual wear

Reg. \$1.00

**49c**  
Pair

NEW

### MAGIC BRUSH! LINT PICK-UP

Picks up Lint  
and Dust like  
Magic. Self  
Cleaning.

Reg. \$1.98

**99c**  
Each

### LADIES' GIANT SIZE ALL - PURPOSE TOTE BAG

Made of heavy gauge  
vinyl. Each printed in  
beautiful floral pattern.  
Great for shopping,  
travel, knitting - or  
lend it to Junior for  
Trick-or-Treating!

Reg. \$1.49 Value

**49c**  
Ea



VALUABLE COUPON

Reg. \$1.99 First Quality  
ONE SIZE  
**PANTY HOSE**  
IN THE PINK BOX

Limit One Pair  
**49¢** Pair  
See Front Page

- WITH THIS COUPON -

- FALL SALE -

VALUABLE COUPON

Reg. 79¢ Trick-or-Treat  
**CANDIES**

Limit Two Pkgs.  
**59¢** Pkg.  
See Front Page

- WITH THIS COUPON -

- FALL SALE -

VALUABLE COUPON

Reg. 98¢ Plastic  
**TRASH BAGS**

Limit One Pkg.  
**33¢** Pkg.  
See Front Page

- WITH THIS COUPON -

- FALL SALE -

VALUABLE COUPON

Reg. 79¢ Heavy Duty  
EXTRA WIDE  
**ALUMINUM FOIL**

Limit Two Rolls  
**49¢** Roll  
See Front Page

- WITH THIS COUPON -

- FALL SALE -

**SET of 4 MUGS**  
with Wrought Iron  
**MUG TREE**

Mugs are Dishwasher Safe, Detergent Proof, Self-Stacking

Reg. \$2.98  
**\$1.97** Set

100% Polyester  
MACHINE WASHABLE - DRYABLE

Fashionable  
**SHAG RUG**  
LUXURIOUS - THICK - TWO TONE

OR  
**HIGH PILE RUG**  
24" x 48" Rectangular  
SOLID DECORATOR COLORS

Reg. \$5.95  
**\$3.99** Each  
Your Choice

All Rugs with Skid-Resistant Backing

**WOOD FRAMED PICTURES**  
TWELVE EXCITING PICTURES

From World Renowned Artists reproduced in Rich, Deep Colors, Each in distinctive 2" Frame. All pictures measure 22" x 28" overall. Come in and see our selection.

Reg. \$5.98 Value  
**\$3.49** Each

**HEALTH & BEAUTY AIDS**

**SWAN BRAND ASPIRIN**

100-ct. Btl. 5-GRAIN

Reg. 29¢  
**14¢** Btl.

ADDITIONAL Btls. 19¢ Each During Sale

LIMIT ONE BTL. with Coupon Above

**GILLETTE RIGHT GUARD DEODORANT**

Reg. \$1.09  
**59¢** Can

net wt. 4-oz.

**NORTHERN ELECTRIC VAPORIZER**  
Unbreakable Plastic  
1-GALLON CAPACITY

Reg. \$6.95  
**\$2.99** Each

Made of durable heat-resistant plastic. Produces steam for 8-10 hours. Shuts off automatically. Has molded medicant well.

**NORTHERN ELECTRIC COOL SPRAY HUMIDIFIER**

Sufficient output to humidify the average room - help prevent colds. Full gallon capacity. Operates 10-12 hours without refilling. Decorative styling.

**PERSONNA '74**

FREE! WITH REFUND OFFER!

Buy him the best shave he's ever had and get 74¢ Refund Check... Signed by Your Choice of 26 N.F.L. Super Stars

You Pay Only **74¢** and Get It back in Mail

Choice of:  
DOUBLE EDGE 5's - Reg. 89¢  
INJECTOR 7's - Reg. \$1.15

**LISTERINE ANTISEPTIC**

Kills germs that cause bad breath!

Reg. \$1.29  
**79¢** Btl.

ADDITIONAL Btls. 88¢ Each During Sale

Net 14 Fl. Oz. LIMIT ONE BTL. with Coupon Above

**5-CUP ALUMINUM ELECTRIC COFFEE PERC**

Reg. \$4.00  
**\$2.99** Each

UL Approved

**PRELL SHAMPOO**

CONCENTRATE SPECIAL

**88¢** for BOTH

FREE Scotch Hair Set Tape

Shampoo Reg. \$1.09  
Hair Set Tape Reg. .69  
TOTAL Value \$1.78

NO LIMIT - While They Last!

**FEVER THERMOMETER**

ORAL  
RECTAL

Unconditionally Guaranteed For Accuracy

Reg. \$1.39  
**57¢** Each

Your Choice

**KITCHEN HELPERS**

To Make Cooking Faster, Easier, More Fun... CHOICE OF:

- Salad Set with Ceramic Handle
- No-stick Scoop
- Butter Warmer
- 4-Pc. Scoop Set
- Meat Tenderizer
- Whipper Beater
- Set of Steak Knives
- Nut Cracker
- Salt & Pepper Set
- Kitchen Scissors
- Pastery Blender
- Adjustable Cheese Slicer

Reg. \$1.00  
**77¢** Each

NO LIMIT - WHILE THEY LAST!

**CANNON THICK VELOUR BATH TOWELS**

Solids, stripes, prints & jacquards. Fabulous Savings on #1 seconds.

Reg. Values \$2.00 to \$2.49  
BUY NOW for CHRISTMAS!

Special **\$1.29** Each

4 For \$4.99

**STAYFREE MINI-PADS**

Reg. \$1.75  
**\$1.22** Box

48's

**CHASTE FEMININE HYGIENE DEODORANT**

Reg. \$1.69 Value  
**89¢** Each

Special Introductory Price

net wt. 1-1/8 oz.

**LIQUID WOOLITE COLD WATER WASH**

Reg. \$1.39  
**\$1.11** Btl.

16 Fl. oz.

SOME ITEMS NOT EXACTLY AS PICTURED

WE RESERVE THE RIGHT



Reg. \$1.00 Six-Ft. Plastic

**FLOOR RUNNER**

**12¢** Each  
See Front Page

- WITH THIS COUPON -

Reg. 69¢ Johnson Wax

**GLADE AIR-FRESHENER**

Limit Two Cans  
**44¢** Can  
See Back Page

- WITH THIS COUPON -

Reg. 29¢ Swan Brand

**ASPIRIN**

Limit One Btl.  
**14¢** Btl.  
See Below

- WITH THIS COUPON -

Reg. \$1.29

**LISTERINE ANTISEPTIC**

Limit One Btl.  
**79¢** Btl.  
See Below

- WITH THIS COUPON -

**SOLID STATE 10 A M PORTABLE RADIO**

Baggage Type Case with Handle, AC Jack, Earphone and Battery. Choice of Black, Green or Red.

Reg. \$10.95

**\$6.77** Each

**TIMEX PETITE WATCH**  
For Girls, Boys, Ladies

- Chrome Plated
- Black Strap
- Sweep Second Hand

Buy NOW for CHRISTMAS!

Reg. \$7.95

**\$5.97** Each

**DELICIOUS PLANTERS PEANUT BUTTER**  
net wt. 18-oz.

ADDITIONAL Jars 59¢ Each During Sale

- SMOOTH
- CRUNCHY
- CREAMY

Reg. 13¢

**49¢** Jar

LIMIT ONE With This Coupon

**HALLOWEEN HEADQUARTERS**

**NORTHERN ELECTRIC**  
1-Year Guarantee

**HEATING PAD**

Reg. \$4.95

Century Model #1811

3 Positive settings, 4 position switch with night light. Waterproof plastic jacket. Removable washable cover.

U.L. Approved

**\$2.99** Each

**2-QUART**

**EARLY AMERICAN**

Reg. \$4.98

**TEA KETTLE**

**TEFLON II 10" FRY PAN**

Bright Porcelain Exterior and No-Stick Surface

Reg. \$4.95 Value

**\$2.29** Each

**11" SQUARE GRIDDLE**

Clad Exterior • Easy to Clean • Duty Steel

Extra large Square Cooking Surface with Low Sides to make turning of foods easy

**JUMBO EXPANDO HAT & COAT RACK**

Reg. \$1.49

**88¢** Each

Beautifully finished wood rack. Expands to fit your needs. Has 10 pegs - Ideal for hanging hats, coats, pot holders, gloves and gadgets.

**PORTABLE SWEATER DRYER**

Reg. \$1.98

**99¢** Each

Mesh allows air-flow circulation - Quick drying sweaters, socks, etc. to their natural shape without stretching.



**PAPER PEOPLE**

Reg. \$1.49

**98¢** Each

COMPLETE "CUT-OUT" COSTUMES

- Costume • Hat • Cuffs

ONE SIZE FITS ALL  
Creative - Flame Retardant  
Rugged - Fun!

Ideal for Trick-or-Treating, School Programs, Indoor Fun on bad weather days.

**VINYL SAFETY HALLOWEEN MASKS**

Compare at 39¢

**29¢** Each

Complete Assortment

**BIG JACK PUMPKIN**

with Plastic Handle  
NOVELTY FACE with MASK

Reg. 89¢

**64¢** Each

- For Collecting Treats
- For Decorative Purposes

**HALLOWEEN MAKE-UP KIT**

Reg. 39¢

**29¢** Kit

- Safe • Non-Toxic
- Comes with Instructions

**2 "D" CELL FLASH LIGHT**

Reg. 98¢

**49¢** Each

Throws a powerful beam!

Made of Unbreakable Plastic

batteries not included

**ORANGE & BLACK PEANUT BUTTER FILLED KISSES**

**35¢** Pkg.

net wt. 12-oz.

**20 - 5¢ CANDY BARS**

**BABY RUTH**

Reg. \$1.00 Value

**79¢** Pkg. of 20

**BUTTERFINGER CANDY BARS**

**WILD CHERRY LONG CANDY ROLLS**

**SUPER SKRUNCH BAR**

**PEANUT BUTTER OOMPAS**

Six 10¢ Bars  
60¢ Value

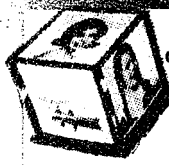
**49¢** Pkg. of 6

From the Movie:  
"Willy Wonka and the Chocolate Factory"

QUANTITIES

WHILE THEY LAST





**SIX SIDED CLEAR PLASTIC PHOTO CUBES**

Displays Six Photos at one time. Has Storage Capacity for up to 135 Instamatic Photos.

Reg. \$1.69

**77¢** Each



**Deluxe CHRISTMAS CARDS**

25 Assorted Cards and Envelopes in each box. Shop Early and Save!

Reg. \$2.50

**99¢** Box



**CHRISTMAS GIFT-WRAP**

20 Sheets 20" x 30" 10 Different Patterns per Pkg.

Reg. \$2.25 Value

**77¢** Pkg.



**TWINE**

Reg. 39¢ High Strength PARCEL POST

Tangle-Free" Pull from Center Twines

**29¢** Roll




**Deluxe Quality BOXED STATIONERY**

Available in Pastels, Hot Colors and Decorated Envelopes and Writing Sheets.

Reg. 79¢

**49¢** Box

**MAIL EARLY TO SERVICE MEN OVER SEAS**




**MFG. UNDER EASTMAN KODAK PAT. INSTANT LOAD CAMERA**

- Takes Color Prints, Color Slides, Black & Whites
- Just drop in \$126 Film, Pop in Flash Cube

Reg. \$7.50

**\$4.99** Each

**FREE** Westinghouse 4-Shot Flash Cube



**JUMBO CEDAR pattern STORAGE CHEST**

Reg. \$1.98

**99¢** Each

Assembles Quickly - Reinforced Durable Construction - 2 Heavy Duty Handles. Size: 24-1/4 x 14-3/8 x 10-5/8 inches.



**NEW - FLORAL PATTERN UNDER-THE-BED STORAGE CHEST**

OR USE IT ON THAT TOP CLOSET SHELF

Reinforced durable construction. 2 Heavy Duty Plastic Handles. Safely store out-of-season clothing, linens and draperies. Size: 32-1/4 x 16-3/8 x 6-1/4 inches.

Reg. \$1.98

**\$1.44** Each



**JOHNSON WAX GLADE AIR FRESHENER**

net wt. 7-oz.

- Evergreen
- Spring Flower
- French Modern
- Floral Sachet

**ADDITIONAL 49¢ Each During Sale**

Reg. 69¢

**44¢** Each

LIMIT TWO with Coupon Inside



**SENTINAL HI-INTENSITY CAR SPOTLIGHT**

Reg. \$1.79

**88¢** Ea

Just plug it in your cigarette lighter. Operates on any 12-V battery. Cord stores in handle. 10-Foot Cord gives wide range of activities for tire repairs, trouble shooting, map reading, search and distress signals.

- Car
- Boat
- Camper

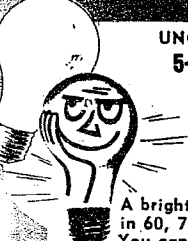


**Conveniently Holds 9 Pairs METAL SHOE RACK**

Reg. \$1.98

**99¢** Each

Keeps your Shoes orderly and neat in a compact space - off the floor. Closets stay cleaner. Assembles in seconds. No tools needed. Non-marring vinyl feet.



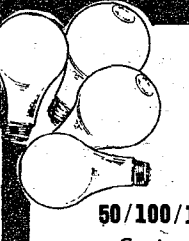
**UNCONDITIONALLY 5-YEAR GUARANTEED AMERICAN MADE LIGHT BULBS**

A bright idea - Light Bulbs in 60, 75 and 100 Watt sizes. You can buy 30 Years worth of Light - 6 Bulbs for \$1.14

Reg. 69¢

**19¢** Ea.

**6 For \$1.14**



**3-WAY LONG LIFE LIGHT BULBS**

Reg. 79¢

**59¢** Each

50/100/150 Watt Bulbs

Carries a 2-Year Guarantee!



**INSTANT BLUE AUTOMATIC TOILET BOWL CLEANER**

Reg. 98¢ Value

**49¢** Each

- Cleans • Deodorizes • Freshens
- Biodegradable - Concentrated
- Lasts up to Two Months

BUY SEVERAL and SAVE!

net wt. 9-oz.



**STYRAFOAM HOT or COLD CUPS**

Pkg. of 25 - 6-oz. Size

KEEPS HOT DRINKS HOT  
KEEPS COLD DRINKS COLD

Reg. 39¢

**24¢** Pkg.



**PLANTERS DRY ROASTED PEANUTS**

Reg. 99¢

**77¢** Jar

net wt. 11-oz.



**WALNUT FINISH SUIT & DRESS HANGERS**

17-Inch Curved Top Quality Wood

Reg. \$1.29

**77¢** Set of 2

Keep Your Clothes Looking Neat!



**ZIPPO TYPE WINDPROOF LIGHTER**

SATIN FINISH

Reg. \$1.00

**33¢** Each



**FAMOUS RED DEVIL'S LIGHTER FLUID**

Best Buy for your money. Get the 8-oz. Can for the Price of the 4-oz.

8 Fl. oz.

Reg. 33¢

**23¢** Can



**CONTOUR SELF-STACK ASH TRAYS**

Decorator Colors. Alcohol Proof. Burn Proof and Easy to Store. Can be used as a Candle Holder, Nut Bowl or Snack Bowl.

Reg. \$1.00

**59¢** Each

**\$1.72** Per Set of 3



**RAIN-PROOF LANTERN**

Heavy Duty Plastic Case. Uses 2 "D" Cells. Powerful beam - Jumbo Reflector.

Reg. \$1.79

**88¢** Each



**GIANT SIZE 50 Gallon/6 Bushel YARD CLEAN-UP BAGS**

EXTRA HEAVY - FOR LEAVES, GRASS and TRASH

Reg. 98¢

**44¢** Pkg. of 4



**Men's - Youth's - Ladies' RED HUNTING GLOVES**

KNIT WRIST - JERSEY

Reg. 69¢

**44¢** Pair